



POLICY 5.016

5-A I recommend that the Board approve development of the proposed revised Policy 5.016, entitled “Choice Schools and Programs.”

[Contact: Mary Vreeland, PX 47371.]

Development

CONSENT ITEM

- This revision updates references to the most current versions of the Procedures Manual for Choice Schools and Programs and Choice Programs booklet.
- It also adopts by reference the relevant forms.
- Changes to the Choice Programs booklet include new programs and eligibility requirements.
- Changes to the Procedures Manual for Choice Schools include adding a provision due to a new State Statute.

POLICY 5.016

PROCEDURES FOR CHOICE SCHOOLS AND PROGRAMS

- 1
2
3 1. The School District's Procedures Manual for Choice Schools and Programs
4 (revised ~~September 2007~~ August 2008) is hereby incorporated by reference as if
5 fully set forth herein and is available on the web site of the Department of Choice
6 Programs and School Choice at www.palmbeach.k12.fl.us/choiceprograms.
- 7 2. Implementation of the procedures in the Manual shall be coordinated by the
8 Director of Choice Programs and School Choice.
- 9 3. The School District's Choice Programs 2009-2010 booklet (~~for the 2008-2009~~
10 ~~school year~~) is incorporated herein by reference as if fully set forth herein and is
11 available on the website of the Department of Choice Programs and School Choice
12 at www.palmbeach.k12.fl.us/choiceprograms/. This booklet sets forth the eligibility
13 requirements for the choice programs and provides additional information relating
14 to the programs, including sites and brief descriptions of the programs, additional
15 admission procedures, and transportation zones. The content of this booklet
16 changes annually with new dates, changes in programs, program information,
17 curriculum, and eligibility, etc.
- 18 4. The official and most updated versions of these two documents can be found on
19 this Department's website at the above-referenced link.
- 20 5. Within these documents there will be references to current information as to
21 existing programs and some of the individuals involved. These may change during
22 the year. These documents are not intended to create any rights as to the
23 continuation of these current specific programs, sites and/or personnel relating to
24 these programs.
- 25 6. All PBSD forms referenced in the Manual and/or the booklet are hereby
26 incorporated by reference as if fully set forth herein and can be found on the
27 District's web site at either www.palmbeach.k12.fl.us/choiceprograms or
28 <http://www.palmbeach.k12.fl.us/Records/FormSearch.asp> and are available from
29 this Department.

30 STATUTORY AUTHORITY: Fla. Stat. §§ 1001.41(1), (2); 1001.42(23)

31 LAWS IMPLEMENTED: Fla. Stat. §§ 1001.41(1); 1001.42(4); 1002.20(6)(a)

32 HISTORY: 9/27/2006-(ER); 11/1/2006; 1/16/08; / /08

Legal Signoff:

The Legal Department has reviewed proposed Policy 5.016 and finds it legally sufficient for development by the Board.

Attorney

Date

PROCEDURES MANUAL FOR CHOICE SCHOOLS AND PROGRAMS¹

1. **History and Purpose**

- a. The School Board is committed to providing quality educational opportunities for all students regardless of background characteristics. It strives to provide an educational environment that enhances the student's educational success, such as a diverse setting that promotes understanding of tolerance and fair play, so that the tenets of a democratic society are reinforced by what students experience in schools. The School Board implemented magnet schools and programs as one way to ensure that quality educational opportunities were available to all students in diverse settings. The School Board continues to use choice schools and programs as a strategy to provide quality educational opportunities for students in diverse settings, to the extent financial resources are available for the programmatic aspects of these schools and programs and for the related transportation.
 - b. The many choice schools and programs initiated in the Palm Beach County School District (PBCSD) in the future will continue to maintain the goals of:
 - i. improving achievement for all students who are participating in the choice schools and/or programs;
 - ii. providing a unique or specialized curriculum or approach; and
 - iii. promoting and maintaining the educational benefits of a diverse student body. Diversity and/or diverse, for the purpose of this manual, are defined as students' first language, Exceptional Student Education (ESE) students with disabilities, the socioeconomic status of the students (based on free and reduced-price lunch data), gender, and race/ethnicity consistent with the state of Florida classification for reporting.
2. **Kinds of Choice Programs** -- At the elementary, middle, and high school levels, the PBCSD may implement total-school choice programs or a choice program within a school. In schools implementing a choice program within a school, the principal shall ensure that, for a certain portion of the day, there is interaction between those students participating in the choice program and those who are not in the choice program. For example, this interaction might occur in art, music, or physical education classes or various elective classes at the secondary levels. The appropriate area superintendent and the school principal or designee shall monitor implementation of this provision.

¹ *This Manual is referenced in School Board Policy 5.016*

3. **Attendance Boundary Options** -- Where a new choice school or program is established in an existing facility that has an existing attendance boundary, the School Board may elect to:
 - a. maintain the same attendance zone; or
 - b. eliminate the existing attendance zone and redraw it so that the students in the existing zone are assigned to another school or other schools in the District, pursuant to School Board Policy 5.01 and 5.012; or
 - c. redraw the attendance zone, pursuant to School Board Policy 5.01 and 5.012, so that a portion of the choice school's membership is comprised of students within walking distance of the school. All other students from the previous attendance zone would be reassigned to another school or schools in the PBCSD.

4. **Academic or Related Eligibility Criteria**
 - a. *Elementary Level* -- Although elementary schools shall not generally use academic or related criteria for choice-school eligibility, elementary choice schools shall require--as a condition for admission--that parents/guardians sign a contract agreeing to the student requirements of the choice school. This may include required participation in school activities, acceptable attendance, acceptable conduct or abiding by a specified dress code where such requirements are part of the choice theme.
 - b. *Secondary Level* -- At the secondary level, the Superintendent and Chief Academic Officer may allow a school to use academic or related criteria for determining whether students are eligible for a choice school or program. Secondary choice schools shall require, as a condition for admission, that parents/guardians sign a contract agreeing to the student requirements of the choice school or program. This may include required participation in school activities, academic criteria (if applicable), acceptable attendance, acceptable conduct or abiding by a specified dress code where such requirements are part of the choice theme. Eligibility must be determined for all students who apply to programs that have academic or related criteria. Once an application is completed, it is the parent's/guardian's responsibility to make sure that the choice school or program receives the required teacher recommendations and/or student's transcript or academic record. [See paragraph (7)(e) below]
 - i. By February 1, the principal shall submit any newly proposed or changed criteria for the next school year to the appropriate Area Superintendent and to the Choice Programs and School Choice Director. By April 1, the Choice Programs and School Choice Director shall review any proposed criteria for the following school year to ensure that they are educationally related to the specialized curriculum or instructional strategy. The Superintendent, Chief Academic Officer or designee, with legal support available from the Office of Chief Counsel, shall review the eligibility criteria and require that they be nondiscriminatory and provide equal access. The Superintendent or designee must approve any changes to the eligibility requirements.

- ii. Secondary choice schools or programs that use academic or related eligibility criteria must use a selection committee to determine which applicants are eligible for the computerized random lottery selection process that is used to promote equity and diversity in the assignment of students to choice schools and programs. Principals shall appoint the members of selection committees at choice schools or programs that use selection committees and shall ensure a diverse membership. The names of the proposed members for the selection committee shall be submitted to the Area Superintendent and the Choice Programs and School Choice Director no later than January 19. [See paragraph (7)(e) below]
 - iii. All students applying to the District's arts' schools must meet the eligibility criteria set by the school through their audition process in order to be allowed entrance to the school or to be part of the random lottery system.
 - 1. ESE, ELL and 504 students must provide their ESE IEP, ELL Plan or their 504 Accommodation Plan at the time of the audition sign-up or prior to the audition in order to request allowable audition accommodations.
 - 2. Private school students without a District IEP or a District 504 Accommodation Plan may also request allowable audition accommodations if the parent provides appropriate documentation of the student's disability to the school at the time of the audition sign-up or prior to the audition.
 - 3. If a student becomes ill and is unable to audition on the scheduled audition date, he/she must provide the school with written proof of illness from a doctor within three (3) school days of the date of the student's scheduled audition. The student's audition will then be rescheduled at a time set up by the school *only if* there are more audition dates available. If a student qualifies for the program, acceptance will be based on space availability, following the procedures stated below in Section 6 & 7. If no space is available, the student will be placed in the wait pool with other students.
5. **Recruitment** -- To ensure that all students have equitable educational opportunities and to promote diverse choice-school enrollment, it is the goal of the PBCSD to provide all students with the opportunity to access choice schools and programs.
- a. To carry out this goal, the Superintendent and Chief Academic Officer shall ensure that recruitment strategies are developed by each choice school or program and that each school submits a recruitment plan to implement these strategies to the appropriate Area Superintendent and to the Choice Programs and School Choice Director no later than September 15 of each school year. Each school's recruitment plan shall be designed to achieve a diverse applicant pool to promote the PBCSD's diversity goals at each individual choice school or program.
 - b. The PBCSD seeks to provide information and assistance to all parents/guardians as they make choices for their children. The PBCSD's Department of Choice Programs and School Choice shall be responsible for making available choice schools and

programs information at the Fulton-Holland Educational Services Center, on the PBCSD's Web site at: www.palmbeach.k12.fl.us/choiceprograms and in every public school throughout the PBCSD. The Department of Choice Programs and School Choice is also responsible for coordinating outreach programs for developing and monitoring applicant pools for each choice school or program. The PBCSD may use resources such as the following to promote these outreach programs: choice school fairs, newsletters, choice program applications, newspaper and radio advertisements, civic organizations, the Internet, The Education Network (T.E.N.), promotional recruitment, and publicity through other local government agencies.

6. **Application Process** -- In order for the student-applicant to be eligible for consideration for a choice school or program, the parents/guardians of applicants must return completed applications to the Department of Choice Programs and School Choice (for fall admission to the choice school or program) no later than the District's last full attendance day prior to the beginning of the winter holidays for elementary and secondary (middle and high school) choice schools and programs. The Choice Programs Application (PBSD 1537) and the Teacher Recommendation (PBSD 1725) forms ~~are incorporated herein by reference~~ and can be found on the District's web site at: www.palmbeach.k12.fl.us/choiceprograms .
 - a. Between September 1 and no later than the District's last full attendance day of the first semester for students, the District will make applications available for choice schools and programs, for the following school year, at each public school in the PBCSD, at the Fulton-Holland Educational Services Center and on the Choice Programs website at: www.palmbeach.k12.fl.us/choiceprograms .
 - b. A student must be residing in Palm Beach County prior to completing an application or auditioning for a choice school or program in the PBCSD.
 - c. Only one (1) application may be submitted per student, and no changes will be allowed once the application is submitted. The application shall be verified by the parent/guardian under penalties of perjury, pursuant to Florida Statute, Section 92.525, that the information stated in the application is true and correct.
 - d. The Choice Programs Application is available for submission online at the following website: www.palmbeach.k12.fl.us/choiceprograms. When submitting this completed web-based form, the parent/guardian is verifying, under penalties of perjury, that his/her electronic submitted application is authentic, the information provided is true and correct, and that he/she is the parent/guardian authorized to submit the application.
7. **Selection Process** -- Prior to the annual activation of the selection process for each choice school and program, the staff of the Department of Choice Programs and School Choice shall analyze the applicant pool for each choice school and program. For school-wide choice schools with attendance boundaries, the PBCSD shall estimate the projected enrollment of students residing in the boundary. The school's program capacity, less this projected enrollment, shall be the number of available seats for the selection process.

- a. In order to ensure that eligible students who live outside the attendance area have access to choice programs, the following formula will be used. This process is not necessary for schools that have no specific Study Area Code (SAC) area assigned.
 1. A maximum enrollment number will be determined for each choice program.
 2. A number indicating 50% of the maximum enrollment will be determined.
 3. The number will be divided by 4.
 4. The quotient will indicate the least number of students from out of the attendance/SAC area that a program may accept at the 9th grade level unless it would bring the total school population above 100% of the school's Florida Inventory of School Housing (FISH) capacity.
 5. If the number of out of attendance/SAC area applicants is less than the number indicated in #4 above, or the school's population is below 100% FISH capacity, all eligible out of attendance/SAC area applicants may be accepted in order to meet the maximum enrollment for the grade level.

- b. The Choice Programs and School Choice Director shall implement the procedures as set forth herein for the annual lottery selection process that will take into consideration the diversity of the PBCSD.

- c. If there are fewer applicants than available seats, the PBCSD shall admit all eligible applicants to the choice school or program. In that situation, applications submitted after the deadline date will be processed for consideration, as placements are needed to continue to fill available seats. Students in the wait pool enrolled in PBCSD elementary or secondary schools will not be placed in choice schools or programs after the 11th day count.

- d. If the applicant pool for a given school contains more eligible applicants than available seats, the PBCSD will use a special selection process, consistent with Florida Statute Section 1003.06 (2008) as to multiple birth siblings, as follows:
 - i. In order for an applicant to participate in the computerized random lottery, the applicant must meet the eligibility requirements for the program as described in the *Choice Programs* booklet. Applicants must rank their program selections in order as first (1st), second (2nd) and third (3rd) choice preferences on the application, if the student has more than one (1) choice program preferences.

 - ii. Where there are more applicants than available seats in a choice school or program, the PBCSD will give preferences as follows:
 - A. up to 20% of the available seats may be selected by the principal from the highest qualified applicants who selected that particular program as their first (1st) choice for each choice school or program prior to the random lottery. The names of these students will be sent to the Director of Choice

Programs and School Choice immediately following the eligibility determination of all students who applied to the choice school or program;

- B. up to 45% of the available seats in the elementary or up to 25% of the available seats in the secondary choice school or program may be filled with first (1st) choice applicants using the number of seats remaining, after deducting the 20% of the highest scoring eligible students for the specified program and are siblings of those students who are currently attending and will continue to attend the choice school or program the next year. A sibling is defined as a brother, sister, half-brother, half-sister, stepbrother, or stepsister who lives in the same household;
 - C. up to 50% of available seats, after deducting the 20% of highest scoring eligible students and the 45% or 25%, as applicable, for siblings, may be filled with eligible first (1st)_choice applicants who have participated in and completed a program in a similar, preparatory choice theme at the lower grades. To be eligible for this preference, however, a student must meet any academic or related criteria for the choice program for which they are applying;
 - D. first (1st) choice applicants who meet the eligibility requirement for the specified program who belong to a district-approved priority group or population, which includes neighborhood-designated SAC areas (see Appendix A to this manual), and/or any other specified group of students indicated in the school's informational paperwork if there are still available seat; and
 - E. first (1st) choice applicants who meet the eligibility requirements for the specified program will be admitted if they have a parent who is a full-time employee at the choice school to which they apply.
- iii. Next, the PBCSD will analyze whether using a fully random lottery to fill the remaining seats (after admitting boundaried students and giving the preferences described in paragraph (i) above), would result in a student composition, for the school or the programs, reasonably reflective of the diversity of the PBCSD. If the results would be appropriate, the remaining seats will be filled through a computerized, random lottery.
 - iv. All eligible students who submit an application by the deadline date will qualify for participation in the initial computerized random lottery according to the prioritized selections made on the Choice Programs application. Students selecting programs as second (2nd) or third (3rd) choices may not participate in the initial computerized random lottery selection if there are more first (1st) choice applicants than available seats. When there are more applicants than available seats for the respective choice schools and programs, a computerized, random lottery selection process will be used to ensure equity in the assignment of eligible students to programs.

- v. If there are fewer first (1st) choice applicants than number of seats available for a program, all eligible first (1st) choice applicants will be chosen for the program. Once all first choice applicants have been selected, and there are more seats still available, a computerized random lottery will be run for all second (2nd) choice applicants who were not selected for their first (1st) choice until all program seats are filled. This process is used for all programs in order to fill all available seats. Once a student has been selected for one of his/her indicated choices, he/she is immediately removed from the lottery for all other programs indicated on his/her Choice Programs Application (PBSD 1537).
- vi. If a program still has available seats and all first (1st) and second (2nd) choice applicants have been selected, applicants that have indicated programs as a third (3rd) choice will participate in a third (3rd) choice computerized random lottery until all seats are filled. Once a student has been selected for one of his/her indicated choices, he/she is immediately removed from the lottery for all other programs indicated on his/her Choice Programs Application (PBSD 1537).
- vii. Applicants will remain in their respective “wait pool” indicated by their numbered choices until the first (1st) choice applicant pool is depleted. Once the first (1st) choice “wait pool” is depleted, applicants from the second (2nd) choice “wait pool” will be selected to fill available seats. Applicants from the third (3rd) choice “wait pool” will not be selected until the first (1st) and second (2nd) choice “wait pools” are depleted. Once a student has been selected for one of his/her indicated choices, he/she is immediately removed from the “wait pool” for all other programs indicated on his/her Choice Programs Application (PBSD 1537).
- viii. However, if using a fully-random lottery, as set forth in sub paragraph (7)(d)(iii) above, to fill the remaining seats (after admitting boundaried students and giving the preferences described in paragraph (i) above) would likely result in a school enrollment that, based on a statistical analysis, is not reasonably reflective of the diversity of the PBCSD in terms of the designated variables, then a weighted random lottery selection process would be conducted according to the following procedure:
 - A. The applicant pool shall first be weighted for students’ first language. Then, that new weighted pool and existing enrollment will be analyzed for other factors listed below. If the likely school enrollment would fall within the appropriate range for all of those factors, then a lottery shall be conducted using the pool weighted only for students’ first language;
 - B. If further weighting is needed after weighting for students’ first language, the pool may then be weighted for ESE students with disabilities. Then, that new weighted pool and existing enrollment will be analyzed for other factors listed below. If the likely school enrollment would fall within the appropriate range for all of those factors, then a lottery shall be conducted using the pool weighted only for students’ first language and ESE students with disabilities;

- C. If further weighting is needed after weighting for students' first language and ESE students with disabilities, the pool may then be weighted for socioeconomic status of the students. Then, that new weighted pool and existing enrollment will be analyzed for other factors listed below. If the likely school enrollment would fall within the appropriate range for all of those factors, then a lottery shall be conducted using the pool weighted only for students' first language, ESE students with disabilities and socioeconomic status of the students;
 - D. If further weighting is needed after weighting for students' first language, ESE students with disabilities and the socioeconomic status of the students, the pool may then be weighted for gender to the extent necessary to limit the estimated variation in gender to a reasonable degree. Then, that new weighted pool and existing enrollment will be analyzed for other factors listed below. If the likely school enrollment would fall within the appropriate range for all of those factors, then a lottery shall be conducted using the pool weighted only for students' first language, ESE students with disabilities, socioeconomic status of the students and gender;
 - E. If further weighting is still needed after weighting for students' first language, ESE students with disabilities, the socioeconomic status of the students, and gender, as a last resort the pool may also be weighted for race/ethnicity, and a random lottery selection process will then be held.
- e. For secondary schools with academic or related eligibility criteria, all applicants determined to have met the eligibility requirements shall have access to the choice school or program through the computerized random lottery selection process, as described above. Selection committees shall determine those students who have met the eligibility criteria. No later than the first week in February, the Choice Programs and School Choice Director shall require that principals submit a list of student applicants who do not meet the eligibility requirements, as well as a list of students who do meet the requirements and are eligible for access to the choice school or program through the random lottery selection process. There shall be no rank ordering of eligible students.
 - f. Students are obligated to accept the program that they have indicated as their first (1st) choice, if they are selected, or they must return to their home school.
 - g. If a parent does not want his/her child to attend the second (2nd) or third (3rd) choice program, if selected, the parent must decline the selected program and notify the Department of Choice Programs & School Choice that the student wants to remain in the "wait pool" for his/her other program(s).
 - h. Students that are not selected to attend Choice Programs in the initial computerized random lottery will remain in the "wait pool" in accordance with the numerical choices made on their application. As openings for programs occur, students will be selected from the first (1st) choice "wait pool" to fill these openings until the first (1st) choice "wait pool" is depleted. Once the first (1st) choice "wait pool" is depleted, students from the second (2nd) choice "wait pool" will be chosen to fill openings as they occur.

Students will not be selected from the third (3rd) choice “wait pool” until the first (1st) and second (2nd) choice “wait pools” are depleted.

- i. If a student is not determined eligible for his/her selected choice program(s), the choice selection on the application does not change i.e., the 2nd or 3rd choice does not move to the 1st choice selection and so on.

8. Appeal Process -- If parents/guardians believe that their child was not allowed an equitable opportunity to a choice school or program during the audition or eligibility process, the parent/guardian may request an appeal.

a. A parent may request an appeal within ten (10) school days from the date of the letter indicating his/her child’s assignment, wait pool status, or determination of ineligibility. The request for an appeal must be sent in writing to the Choice Programs and School Choice Director, with a copy sent to the choice school or program’s principal. The request must state the alleged inequity or technical problem as defined in (8) (b) below and should include information supporting the appeal.

b. The following definitions apply to this appeal process:

- 1) **Technical Problem:** Any relevant malfunction, such as defective equipment or a power failure in the building, or a mathematical error that could have a negative effect on the outcome of the student’s audition or eligibility process.
- 2) **Inequity:** A failure to provide appropriate accommodation(s) according to a child’s documented disability or limited English proficiency during the student’s audition or eligibility process.

c. After a written request for an appeal is received from a parent/guardian, the Department of Choice Programs & School Choice will investigate the alleged inequity or technical problem to determine its merit. At the completion of the investigation, one of the following actions will occur:

- 1) The Department of Choice Programs and School Choice will send a letter to the parent/guardian denying the appeal.
- 2) The Department of Choice Programs and School Choice will send a written notification to the parent/guardian of the time, date and location of the appeal committee hearing.
- 3) The Choice Schools or Programs principal/designee will contact the parent/guardian regarding the information received if the appeal appeared it may have merit.

d. If an appeal committee hearing is granted, the parent/guardian will be given ten (10) minutes to present to the appeal committee the basis of their appeal stating the inequity or technical problem that occurred during the audition or eligibility process as stated in the written request for an appeal to the Director of Choice Programs & School Choice. The Choice Appeal Committee is established under the direction of the Choice Programs and School Choice Director and shall consist of professional educators and administrators with experience and knowledge of schools within the school district. At the conclusion of the parent/guardian’s presentation, the committee will have an opportunity to ask questions of the parent/guardian. The parent/guardian will then leave the room. The school principal or designee of the

choice school or program will be asked to enter the room and have ten (10) minutes to present information concerning the alleged inequity or technical problem previously presented by the parent. At the completion of the responsive presentation, the committee will have an opportunity to ask questions of the choice school or program principal or designee. The choice school or program principal or designee will exit the room. The committee will discuss the information and make the final decision as soon as practicable. Within ten (10) school days from the date the final decision is made, the Director of Choice Programs and School Choice will send a copy of the appeals committee decision to the parent or guardian and the choice school or program principal.

9. **Transportation** -- The School Board shall provide transportation for all students who are enrolled in choice schools and programs who reside more than two miles from the choice school or program, and who reside within a designated choice transportation zone. Bus stops to choice schools or programs may be limited and located significantly further from the student's home. Those students not residing in the transportation zone for a specific choice school or program, but who are selected, may attend but will have to provide their own transportation to and from the school, the nearest school bus pick-up location within the transportation zone, or the nearest Tri-Rail Station location or Palm Tran bus stop. Where economically feasible, the School Board shall provide activity buses to and from secondary choice schools or programs to enable students to participate in extracurricular activities offered at the secondary choice schools or programs which they attend. Transportation zones for each Choice School are located in the *Choice Programs* booklet.

10. **Student Continuation and Exit Procedures** -- Once a student is admitted to a choice school or program, the PBCSD expects and shall allow the student to remain in that choice school or program until the student reaches the highest grade level offered by that school. Students do not have to reapply for admission into the same program once they have been accepted to a choice school or program. However, if a student is not selected to attend a choice school or program this year, a new application must be filled out the following year. A student who fails to meet the standards established in the contract will be placed on probation. If concerns continue or a serious offense occurs, a committee will be established to review, discuss and recommend the appropriate action, as per School District procedures. If a student exits a choice school or program, voluntarily or involuntarily, that student will remain at the same school site for the remainder of the school year, and be placed, if possible, in the regular programming of that school. If there is no regular programming available, that student will attend the school assigned to his/her residence at the end of the following semester. An exit interview will be required for any student who is withdrawn from the choice school or program for any reason other than a change in residence.

11. **Creating, Replicating, or Moving a Choice School or Program** --
 - a. By January 1 of each year, the Superintendent, Chief Academic Officer and the appropriate Area Superintendent, shall determine whether there is a need to identify any potential sites for new choice schools or programs, for replication of existing choice themes at new sites, or for moving a choice program from one school to another. If the need exists for a new school or program, the Program

Proposal form (PBSD 2079), ~~incorporated herein by reference~~ (found on the District's website at: www.palmbeach.k12.fl.us/Records/FormsSearch.asp), must be submitted to the Chief Academic Officer for review by the Program Proposal Review Committee. The Chief Academic Officer, Superintendent and Cabinet will then review the committee's recommendation and approve the program, if appropriate, for implementation up to 18 months from the date of approval.

- b. In making this determination, the Superintendent, Chief Academic Officer, and Cabinet shall utilize the goals for choice schools and programs provided in Section (1)(b) above. In addition, the Superintendent shall use a number of other considerations, including:
 - i. the geographic location of a potential site in order to ensure equitable access to choice programs, including reasonable transportation time, for all students;
 - ii. any demographic changes in an attendance zone, such as declining enrollment or decreasing diversity;
 - iii. the suitability and condition of the potential site;
 - iv. the School Board's priorities;
 - v. the impact that implementing a choice school or program at a potential site might have on displacing students currently assigned to the school and on the enrollment and diversity at the surrounding schools;
 - vi. the potential for attracting a diverse enrollment to a proposed site;
 - vii. the impact on concurrency and the capacity and utilization of a potential site;
 - viii. the achievement data that demonstrates student learning gains;
 - ix. the budgetary impact for creating a new choice school or program, or of replicating a theme at a new site. Consideration should include the available funds for existing choice schools and programs and any other needs of the PBCSD.
- c. In addition to the above factors, in determining whether to replicate a choice theme at another school in the PBCSD, the Superintendent, Chief Academic Officer or designee shall consider whether there is sufficient demand for that theme by reviewing any waiting list for the theme at an existing school, including the number and diversity of the students on the list.
- d. When the Superintendent, Chief Academic Officer or designee has identified a potential site, the proposed theme will be recommended for that site. The Superintendent shall base this recommendation on whether the choice theme:
 - i. will draw a diverse enrollment to that site;

- ii. will improve academic achievement;
 - iii. is aligned with the PBCSD's course of study and preparations for career pathway requirements; and
 - iv. should be implemented for grades K-12.
- e. Once the potential sites and themes are identified, the Superintendent, Chief Academic Officer or designee shall invite principals at those schools to submit the Program Proposal form (PBSD 2079), ~~incorporated herein by reference~~, for a choice school or program at their respective schools. A Choice 5 Year Plan is updated yearly and includes all choice programs recommended for initiation. The Choice Programs and School Choice Director shall provide assistance, as needed, in the development of the proposals. These proposals shall include:
- i. the development of the choice theme/program/design recommended by the Superintendent, Chief Academic Officer or designee;
 - ii. strategies for attracting a diverse population;
 - iii. strategies for improving academic achievement;
 - iv. strategies for aligning the choice theme with the PBCSD's course of study and career pathway requirements;
 - v. how students in the PBCSD shall have access to the application and transportation process for the choice school or program;
 - vi. what the budget requirements are for the choice school or program, including an explanation of why each budget item is reasonable and necessary for the choice theme or program;
 - vii. the impact on facilities and any future recommendations;
 - viii. how the choice school or program will be monitored and evaluated in addition to completed choice program evaluation results.
- f. Principals shall submit their proposals to the appropriate Area Superintendent and to the Choice Programs and School Choice Director by January 31 of each year. Choice schools or programs may be implemented up to 18 months from date of approval.
- g. The Superintendent, Chief Academic Officer or designee shall review the proposals using the goals and criteria specified in the guidelines. Based on the review, the Superintendent shall present to the School Board by May 1, which, if any of the proposals for new or revised choice schools or programs may be implemented.

12. Determining Continuation of Existing Choice Schools or Programs

- a. If a choice school or program is not meeting or making satisfactory progress toward the three goals specified in paragraph (1)(b) above, the Choice Programs and School Choice Director, the Area Superintendent, and the Director of School Improvement shall initiate the activities of a technical assistance planning team. A technical assistance plan will be prepared no later than June 1 for implementation the following year in the choice school or program.
- b. If a choice school or program has not made satisfactory progress after at least three years of implementation and one full year of technical assistance, the Area Superintendent shall notify the principal by June 1 of the end of the technical assistance year regarding discontinuation of the choice school or program. If a choice school or program is discontinued, the Area Superintendent and the principal shall develop a plan to be presented to the Superintendent, Chief Academic Officer or designee to ensure an orderly transition of the choice school or program to a non-choice school program. A Program Conversion/Closure form (PBSD 2168), ~~incorporated herein by reference~~ (found on the District's website at: www.palmbeach.k12.fl.us/Records/FormsSearch.asp), must be completed by the school site, and then will be discussed at the monthly Program Proposal Review Committee meeting.

13. Diversity and District-Wide Maintenance of School Populations

- a. A list will be sent to Area Superintendents, choice schools or programs principals, school-based coordinators, Multicultural and ESE Departments on a bi-weekly basis of English Language Learners (ELL/LY) students and ESE students with disabilities who have applied to choice schools or programs. This information will allow schools to self-monitor their recruiting methods and utilize more effective means for attracting ELL/LY and **ESE** students to their programs.
- b. During the first week of November, the Department of Choice Programs and School Choice staff will analyze elementary and secondary school level choice applications for diversity. The results of the analysis will be shared with the choice school principal and appropriate Area Superintendent. By November 15, if necessary, the Choice Programs and School Choice Director will notify the Area Superintendent if any action plans are required from the principals to modify the recruitment procedures to increase the diversity of the applicant pool for the current recruitment period.
- c. A Choice School or Program ELL/ESE Review Committee consisting of Choice Program, Multicultural, **ESE**, Area and school-level personnel representation will review all LY and **ESE** students with disabilities as to their respective classification that were deemed "ineligible" for program placement. If the committee determines that the students' records indicate that the student should be considered "eligible", the committee will confer with the choice school or program principal to discuss the student's status.

- d. If necessary, the eligible ELL/LY students may be prioritized for placement if there are a disparate number of LY students in each choice school or program.
- e. If necessary, the eligible ESE students with disabilities may be prioritized for placement if there are a disparate number of ESE students with disabilities in each choice school or program.

14. Budgeting and Funding Implications -- No later than September 1 of each school year, choice school principals may submit any proposed budget items to support the unique needs of the choice theme for the following school year. This budget proposal shall be submitted to the Department of Choice Programs and School Choice, and shall be reviewed by the Choice Programs and School Choice Director prior to submission to the Director of Budgeting Services for funding consideration. This process is also followed during the Program Proposal Review Committee meetings.

15. Monitoring and Evaluation -- The Superintendent may submit to the School Board a report regarding the implementation of choice schools and programs. This report may include:

- a. data on the pool of eligible students for each choice school or program;
- b. the diversity of the recruitment pool (in evaluating whether a choice school or program meets or will meet the goal of diversity), the PBCSD broadly considers various types of diversity.
- c. recruitment techniques that have increased and decreased the diversity of the pool of eligible students;
- d. data on the students who were accepted into each choice school or program, including the diversity of the students who were accepted into each choice school or program;
- e. data on the selection committees that are used to determine student eligibility for choice schools or programs, including the diversity of these committees;
- f. identification of any perceived barriers to students being eligible for and admitted into choice schools or programs and recommendations for eliminating any barriers;
- g. data on the unique nature of the program or specialized curricular approach, and its impact on attracting a diverse population;
- h. data on how students are performing in each choice school or program, including how students from diverse populations are performing;
- i. data on the withdrawal of students from each choice school or program; and

- j. any recommendation for improving choice schools and programs, particularly as to the participation of students in choice schools or programs, and the development of outstanding choice schools or programs.

16. Annual Review -- The Department of Choice Programs and School Choice shall review these procedures annually and submit any recommendations for revision to the Superintendent, who may recommend that the procedures be amended accordingly.

DUE DATE TIMELINE

Due Date	Item Due	Intended Person/Department
No later than September 15	Choice Program Recruitment Plan	Area Superintendent, Choice Program & School Choice (CPSC) Director
Between September 1 and the District's last day of student attendance prior to the beginning of the winter holidays.	Application period for elementary and secondary school students	CPSC Department
January 1	Schools submit new program proposals for next school year on PBSD 2079	Area Superintendent, CPSC Director for review by Superintendent and Chief Academic Officer (CAO)
January 19	Schools submit names of eligibility selection committee, if applicable	Area Superintendent, CPSC Director
January 31	Schools submit proposal outlining new program implementation plan	Area Superintendent, CPSC Director for review by Superintendent & CAO
February 1	Schools submit newly proposed or changed eligibility criteria for next school year	Area Superintendent, CPSC Director
April 1	Newly proposed or changed eligibility criteria request reviewed	Superintendent & CAO
May 1	New program implementation plan recommended to school board, if appropriate	Superintendent
June 1	Schools submit technical assistant plan if not making	Area Superintendent, CPSC Director, School Improvement

	satisfactory progress	Director
--	-----------------------	----------

APPENDIX A

Choice Programs and School Choice Priority SAC Areas

School	Program	Choice Priority SAC Areas	Note
Morikami Park Elementary	International Baccalaureate Primary Years	296B, 306A, 306B	Students must submit an application by the deadline
Poinciana Elementary	Math, Science and Technology	257, 406A, 406B	
S.D. Spady Elementary	Montessori	288, 290B, 294	
BAK Middle School of the Arts	Visual, performing, Communications Arts	102, 103, 097C	Must submit an application by the deadline and pass the audition
Suncoast High	Interdisciplinary Program	082, 083, 084, 81A, 81B, 81C, 81D, 81E, 81F, 81G, 81H, 81J, 94A, 94B, 94C, 94D, 94E, 93C, 93D, 93E	Must submit an application by the deadline



Choice Programs

The School District of Palm Beach County

2009 - 2010

Draft



Your Future Your Choice



Mission Statement

The School Board of Palm Beach County is committed to excellence in education and preparation of all our students with the knowledge, skills, and ethics required for responsible citizenship and productive employment.

School Board Members*

William G. Graham, Chairman

Paulette Burdick, Vice-Chair

Monroe Benaim, M.D.

Mark Hansen

Carrie Hill

Dr. Sandra Richmond

Debra Robinson, M.D.

**Denotes members and position at time of Choice Booklet publication.*

Superintendent of Schools

Arthur C. Johnson, Ph.D.

Chief Academic Officer

Ann Killets

Division of Learning Support

Judith Klinek, Assistant Superintendent

Choice Programs and School Choice

Mary R. Vreeland, Director

Kathleen Perry, Principal on Special Assignment

Sandra Wesson, Choice Programs and School Choice, Manager

Constance Scotchel-Gross, Career Education, Manager

Choice Programs 2009-2010¹

General Information on Choice Programs1-2
Frequently Asked Questions (FAQs)3-5
Transportation Zones6-7
List of Elementary School Choice Programs8
List of Middle School Choice Programs9
List of High School Choice Programs10-11
Elementary School Program Descriptions12-15
Middle School Program Descriptions16-20
High School Program Descriptions & Eligibility Criteria21-36
Choice Map37
Choice Schools Open House Dates38-40
Career Education41-42
Charter Schools43-45
Home Education46
No Child Left Behind (NCLB)46
Staff47
Application for Choice Programs	...Appendix A
Teacher Recommendation Form	...Appendix B

Palm Beach County Schools- Rated “A” by the
Florida Department of Education
2005, 2006, 2007, and 2008



The School District of Palm Beach County is an equal education opportunity provider and employer and welcomes applications from ESE, ELL and 504 students to all Choice Programs

¹ This booklet is referenced in School Board Policy 5.016

The School District of Palm Beach County
Department of Choice Programs & School Choice
Presents
The 12th Annual

Showcase Of Schools

Tuesday,
October 21, 2008
4:00-8:30 PM

Americraft Expo Center at South Florida Fair Grounds

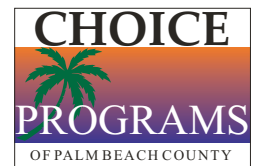
The Department of Choice Programs and School Choice invites all parents and guardians to the **"Showcase of Schools"** on **Tuesday, October 21, 2008** at the **South Florida Fairgrounds Expo Center** located at 9067 Southern Boulevard at the corner of Fairgrounds Road and Southern Boulevard.

The **"Showcase of Schools"** will feature Choice Programs available throughout the School District of Palm Beach County. Representatives from Choice Schools, Career Academies, Magnet and Charter Schools will be available to discuss the educational opportunities offered by the District. Student performances are scheduled throughout the evening. We look forward to seeing you there!

Your Future
Your Choice

Severe Weather
Make Up Date
December 2, 2008

FREE ADMISSION



General Information

The School District of Palm Beach County is a leader in the quality and diversity of education offered to students. Choice Programs offer educational opportunities in Palm Beach County schools. While similar courses may be offered in traditional schools, Choice Programs attract students to schools by offering unique opportunities for in-depth experiences and study in specific areas of interest. Each Choice Program emphasizes a specific theme. Parents are encouraged to become actively involved in “choosing” the program most appropriate for the interests, needs, and abilities of their child.

Choice Programs are specialized educational programs that also enable students to take advantage of additional resources and innovative teaching techniques that focus on the child’s individual talents or interests. Choice Programs create an educational environment which responds to student interests, celebrates cultural and ethnic diversity, and fosters student achievement. The School District of Palm Beach County implemented Choice Schools and Programs as one way to ensure that quality educational opportunities were available to **all** students in diverse settings. **ESE, ELL and 504 students can be accommodated in all programs and are encouraged to apply.** *Procedures Manual for Choice Schools and Programs* can be accessed on the following web site: www.palmbeach.k12.fl.us/choiceprograms.

Choice Programs are designed to:

- Expand educational choices for students
- Set high expectations for all students to achieve academically
- Promote diversity within our schools
- Meet the interests and needs of students
- Enhance parent/community involvement
- Prepare students for further education and/or careers in the world of work
- Provide field-based and hands-on learning experiences
- Offer mentorship, internship and on the job training opportunities

In the School District of Palm Beach County, Choice Programs have three goals:

- 1) to promote or maintain diversity,
- 2) to provide a unique or specialized curriculum or approach and
- 3) to improve achievement for all students participating in choice programs

The Choice Program Application may be picked up and completed at any choice school in the School District, or in the Department of Choice Programs and School Choice. The application is also available in a web-based format or in the back of this booklet and may be downloaded from the web site at www.palmbeach.k12.fl.us/choiceprograms.

All information on the student application must be complete and correct. The application must be signed by the parent or guardian to be eligible for selection. The *original* application must be *mailed or delivered* to the Department of Choice Programs and School Choice and *postmarked* by the deadline date. One application must be completed and submitted for each child applying for a Choice Program. **Only one (1) application may be submitted per student and no changes will be allowed once the application is submitted.** Up to three program choices are allowed on the application. Only students currently residing in Palm Beach County are eligible to apply. The application process is described in the *Procedures Manual for Choice Schools and Programs* located at www.palmbeach.k12.fl.us/choiceprograms.



Students applying to Bak Middle School of the Arts (BAK MSOA) or A.W. Dreyfoos Jr. School of the Arts (Dreyfoos) must pass an audition before they can be considered eligible for admission. Students may only select two programs from BAK MSOA or Dreyfoos and/or a third program from another school. Applicants for BAK MSOA and Dreyfoos must attend audition registration and should contact the schools prior to **January 1, 2009** for details.

Appeals Procedure: A parent may request an Appeals Committee Hearing by submitting a letter in writing to Director of Choice Programs and School Choice within **ten (10)** school days from the date of the letter indicating their child’s assignment, wait pool status, or determination of ineligibility. As stated in number eight (8) of the *Procedures Manual for Choice Schools and Programs*, an appeal will only be heard if the basis for the appeal was determined to be an inequity or technical problem that occurs during the audition or eligibility process.

Application Deadlines

All applications must be postmarked by: **Friday, December 19, 2008.** **Applications postmarked after the deadline will be processed at a later date pending space availability and will not be part of the initial lottery.** Applications may be submitted by hardcopy or web-based format. Only one application regardless of format (hard copy or web-based) will be accepted per student. Students will be notified by mail, no later than May 1, 2009, regarding the status of their acceptance. Some students will be placed in an applicant wait pool when there are more applicants than available seats.

Students will be selected on a random basis as openings occur. For more information, call the Department of Choice Programs & School Choice at (561) 434-8755.

General Information

Admission Criteria

At the secondary level, students may be required to meet academic acceptance criteria for admission. In addition, some Choice Programs may require prerequisite high school credit classes in math or foreign language prior to admission. Admission criteria is detailed for each program in this booklet and the individual schools may be contacted for details.

Performance auditions are required for admission to Bak Middle School of the Arts and A.W. Dreyfoos Jr. High School of the Arts. Admission criteria to secondary Choice Programs is located in each secondary Choice Cluster description in this booklet. Upon acceptance to a Choice Program, students and parents will be required to sign an agreement of understanding that all students are expected to demonstrate good conduct and citizenship skills in order to participate fully in the Choice Program's course of studies. Additionally, many Choice Programs have adopted student dress code requirements. Contact the individual school for details. Secondary students and their parents must sign a contract agreeing that the student will maintain a 3.0 GPA in their Choice Program classes, a 2.0 GPA overall, acceptable attendance and acceptable conduct. Students violating this contract can be dismissed from the Choice Program. Acceptable attendance is defined as "no more than 10 absences per semester during the most recent school year." Acceptable conduct is defined as "has not been suspended for a Level 3 or 4 incident or an accumulation of 10 suspension days for the past school year." **Nothing within this section is intended to supersede any 504 or IEP plan.**

Transportation

Choice students will receive transportation to and from the Choice Program to which they are assigned if they reside more than two miles from the school, and live within the designated Choice Transportation Zone (see pages 6 & 7). Bus stops to Choice Programs may be limited and located significantly farther from the student's home than transportation to their home school. Students who live outside the Choice Transportation Zone may attend the Choice Program if they provide their own transportation to and from the:

- 1) school
- 2) nearest school bus pick-up location within the transportation zone.
- 3) nearest Tri-Rail Station location
- 4) nearest Palm Tran Bus Stop

After-school activity buses may be provided for middle and high school Choice Programs to enable students to participate in extra-curricular activities at the school where they attend if the appropriate numbers are met. Parents are encouraged to contact the Choice Program Coordinator at the school for more information on transportation.

Lottery Selection

All eligible students who submit an application by the deadline date will qualify for participation in the initial computerized random lottery according to the prioritized selections made on the Choice Programs application. Students selecting programs as second (2nd) or third (3rd) choices may not participate in the initial computerized random lottery selection if there are more first (1st) choice applicants than available seats. When there are more applicants than available seats for the respective choice schools and programs, a computerized, random lottery selection process will be used to ensure equity in the assignment of eligible students to programs. Preference will be given to students in accordance with the student selection process described in paragraph numbered seven (7) of the *Procedures Manual for Choice Schools and Programs* available at www.palmbeach.k12.fl.us/choiceprograms.

Once a student is admitted to a Choice Program, he or she is expected to remain in that school or program until reaching the highest grade level offered by that school. Students do not have to reapply for admission into the same program once they have been accepted. However, if a child is not selected to attend a Choice Program this year a new application must be filled out the next year.

Applicants who wish to apply to the same Choice school or program that their sibling is currently attending and that their sibling will be enrolled in for the **FY 2009-2010** school year, will be given preference for consideration on a space availability basis as stated in paragraph numbered seven (7) in *The Procedures Manual for Choice Schools and Programs*. **A sibling is defined as a brother, sister, half-brother, half-sister, stepbrother, or stepsister who lives in the same household.** To be eligible for sibling preference, parents must complete an application for each sibling and submit it by the deadline. For further information, see the Frequently Asked Questions on pages 3 - 5 of this *Choice Programs 2009-2010* booklet.

Elementary students applying to kindergarten must be five (5) years old on or before September 1, 2009. The Montessori Programs at Northboro Elementary and S.D. Spady Elementary are the **ONLY** schools accepting applications for 3 and 4 year old children. **A child must be at least 3 years old by September 1, 2009, to be eligible for an application to a Montessori Choice Program.**

Completed and signed applications must be returned or mailed to the following address by Friday, December 19, 2008:

The Department of Choice Programs
and School Choice
3308 Forest Hill Boulevard, Suite C-124
West Palm Beach, FL 33406

Frequently Asked Questions (FAQs)



1. How can I learn about the many different Choice Programs offered within the School District of Palm Beach County?

Review the information within this *Choice Programs 2009-2010* booklet, and make a list of the schools that you would like to receive more information. Contact the schools directly to schedule a tour or attend the Open House indicated on pages 38-40 of the *Choice Programs 2009-2010* booklet. In addition, all schools offering choice programs will be in attendance at the annual Showcase of Schools to be held on Tuesday, **October 21, 2008** at the South Florida Fairgrounds Expo Center from 4:00 PM to 8:30 PM. More information can be obtained at www.palmbeach.k12.fl.us/choiceprograms.

2. How do I know that my child's application was received by the Department of Choice Programs and School Choice?

Only students residing in Palm Beach County are eligible to apply and once an application is processed, the Department of Choice Programs and School Choice will mail a postcard to the address provided on the application. If a parent would like confirmation of delivery prior to the postcard being mailed, please send your application with a confirmation of delivery tracking number through the United States Postal Service, UPS or FedEx.

3. Are changes allowed on the application once it is submitted?

No changes are allowed on the application once it is submitted to the Department of Choice Programs & School Choice. If a student is not eligible for one of his/her selected programs, the selections indicated will not change. For instance, if a student is not eligible for his/her first (1st) choice selection, the second (2nd) choice selection **does not** become his/her first (1st) selection and so forth. Due to the large number of students applying to programs as their first (1st) choice, many times second

(2nd) and third (3rd) choice applicants are not needed to fill vacant seats in the initial lottery.

4. How is the Choice Programs lottery run?

Student applicants are selected to attend programs through a computerized random lottery process. In order for an applicant to participate in the computerized random lottery, the applicant must meet the eligibility requirements for the program as described in the *Choice Programs 2009-2010* booklet. Applicants must rank their program selections in order as first (1st), second (2nd) and third (3rd) choice preferences on the application.

a) If there are fewer first (1st) choice applicants than number of seats available for a program, all eligible first (1st) choice applicants will be chosen for the program. Once all first choice applicants have been selected, and there are more seats still available, a lottery will be run for all second (2nd) choice applicants who were not selected for their first (1st) choice until all program seats are filled. This process is used for all programs in order to fill all available seats.

If a program still has available seats and all first (1st) and second (2nd) choice applicants have been selected, applicants that have indicated programs as a third (3rd) choice will participate in a third (3rd) choice computerized random lottery until all seats are filled. Once a student has been selected for one of their indicated choices, they are immediately removed from the lottery for all other programs indicated.

b) When there are more first (1st) choice applicants than available seats for any program, applicants are selected by random selection in the preference groups first (preference groups are listed in question 5). Then a computerized random lottery is run to fill the remaining available seats. Applicants will remain in their respective "wait pool" indicated by their numbered choices until the first (1st) choice applicant pool is depleted. Once the first (1st) choice "wait pool" is depleted, applicants from the second (2nd) choice "wait pool" will be selected to fill available seats. Applicants from the third (3rd) choice "wait pool" will not be selected until the first (1st) and second (2nd) choice "wait pools" are depleted. Once a student has been selected for one of their indicated choices, they are immediately removed from the "wait pool" for all other programs indicated.

5. Is there a way for my child to receive preference in the computerized random lottery selection for Choice Programs?

Applicants meeting the eligibility requirements for the specific choice school or program will receive preference in the computerized lottery as follows:

Frequently Asked Questions (FAQs)

a) Principals have the ability to choose students to fill 20% of the number of seats available. This selection must be from the highest qualified first (1st) choice applicants. Second (2nd) and third (3rd) choice applicants are not eligible for the Principals' 20% list. **All students, including those who do not attend a public school but live within Palm Beach County, are responsible for supplying their current transcripts and teacher recommendation forms (when required) and any other required documentation, to the choice school by the second week of January in order to be considered for the Principals' 20% list.** Questions regarding this information should be directed to the school sites to which the student is applying.

b) Applicants who have siblings currently attending the same choice school or program to which they are applying, and will continue to attend during the next school year

c) Applicants who have participated in and completed a program in a similar, documented, preparatory choice theme at the lower grade levels.

d) Applicants that belong to a district-approved priority group or population which includes neighborhood designated SAC areas around the choice school or program.

e) Applicants whose parent(s) are full-time employees at the choice school or program to which they apply.

For more information on the student selection process or lottery preferences, please access the *Procedures Manual for Choice Schools and Programs* available at <http://www.palmbeach.k12.fl.us/choiceprograms> and follow the link to the Procedures Manual.

6. May a parent decline their child's selected program and remain in the "wait pool" for their other programs?

If a student is selected for their first (1st) choice program, they **MUST** accept that program or return to their home school. If a parent does not want their child to attend their second (2nd) or third (3rd) choice program if selected, they must decline the selected program and notify the Department of Choice Programs & School Choice that they want to remain in the "wait pool" for their other program(s).

7. Is there a possibility that my child will not be selected for any of the choices indicated on their application?

Yes. Depending on the number of students who apply for choice programs, there may be more applicants than available seats and not all students who select programs as second (2nd) or third (3rd) choices will participate in the initial computerized random lottery selection.

8. How do I determine what the eligibility criteria is for a Choice Program?

There is no eligibility criteria for elementary or middle school programs with the exception of Bak Middle School of the Arts. Eligibility criteria for each high school program is printed in the *Choice Programs 2009-2010* booklet under the description of each program. This is the only eligibility criteria a student must meet in order to be considered eligible for the choice program. **Once an application has been completed, it is the parent's responsibility to make sure that the choice school or program receives the required teacher recommendations and/or student's transcript or academic records.** Students applying to BAK Middle School of the Arts or A. W. Dreyfoos School of the Arts must pass an audition before they can be considered eligible for admission. (There are separate publications completed by both schools that describe these audition and selection processes in detail.)

If a student is not determined eligible for their selected choice program, their choice selection on their application does not change i.e., their second (2nd) or third (3rd) choice **does not** move to their first (1st) choice selection and so on.

9. If my child is assigned to a second (2nd) or third (3rd) choice program, will they remain in the "wait pool" for their first (1st) choice program?

No. Once a student is assigned to a program, they are removed from all "wait pools".

10. After the initial Choice Programs lottery is run, how is the "wait pool" determined?

Students that are not selected to attend Choice Programs in the initial computerized random lottery will remain in the "wait pool" in accordance with the numerical choices made on their application. As openings for programs occur, students will be selected from the first (1st) choice "wait pool" to fill these openings until the first (1st) choice "wait pool" is depleted. Once the first (1st) choice "wait pool" is depleted, students from the second (2nd) choice "wait pool" will be chosen to fill openings as they occur. Students will not be selected from the third (3rd) choice "wait pool" until the first (1st) and second (2nd) choice "wait pools" are depleted.

11. If an applicant only lists one choice on their application, will they have a better chance of getting into the Choice Program of their choice?

No. All students participating in the Choice Programs computerized random lottery are treated in the same fair and equitable manner.

Frequently Asked Questions (FAQs)

12. How do I know if the Choice School/Program has received my child's transcripts and teacher recommendations?

It is the responsibility of the parent to contact the school to ensure that they have all proper documentation necessary to determine the student's eligibility for the Choice Program(s) indicated on their application and any documentation needed for the principal's 20% list prior to the running of the Choice Programs lottery. Questions regarding eligibility should be directed to the school sites to which the student is applying. **Only high school applicants require teacher recommendations. All teacher recommendation forms must be sent directly to the choice school.**

13. If my application is postmarked after the deadline date of December 19, 2008, will my child be in the initial lottery selection?

No. Applications that are postmarked after the deadline of **December 19, 2008** will be processed on a space available basis after the initial lottery has been run and all "wait pools" of on-time applicants are depleted.

14. How does my child qualify for sibling preference?

A sibling is defined as a brother, sister, half-brother, half-sister, stepbrother, stepsister who lives in the same household. To qualify for sibling preference, applicants must apply to the same choice program or school their sibling is currently attending and will continue to attend during the **2009-2010** school year. Consideration for sibling preference is given on a space available basis and must be indicated on the application. For more information, see the *Procedures Manual for Choice Schools and Programs* located at **www.palmbeach.k12.fl.us/choiceprograms** and follow the link to the Procedures Manual.

15. What is the process for an appeal?

A parent may request an Appeals Committee Hearing by submitting a written request to the Director of Choice Programs and School Choice within ten (10) school days from the date of the letter indicating their child's assignment, wait pool status or ineligibility. **An appeal will only be heard by the committee if the basis of the appeal was determined to be an inequity or technical problem that occurs during the audition or eligibility process.** For more information, see the *Procedures Manual for Choice Schools and Programs* located at **www.palmbeach.k12.fl.us/choiceprograms** and follow the link to the Procedures Manual.

Frequently Asked Questions about A.W. Dreyfoos School of the Arts and Bak Middle School of the Arts

1. Are the audition scores that are needed to meet eligibility the same for each grade level to which the students are applying?

No. Higher audition eligibility scores are required for ascending grade levels at both Bak Middle School of the Arts and A. W. Dreyfoos School of the Arts. Contact the schools for more information.

2. If my child makes a perfect score on their second (2nd) choice art area audition, will they be placed in the art area program in front of a lower scoring first (1st) choice applicant?

No. While the order of your art area on the Choice Programs application does not affect the audition process or audition scores, the School District of Palm Beach County selects qualified applicants from their first (1st) choice "wait pool" prior to selecting students from a second (2nd) choice "wait pool". This also applies to the Principals' 20% list. Students selecting art areas as second (2nd) and third (3rd) choice programs are not eligible for selection on the Principals' 20% list.

3. How do I rank order art areas for my child?

The School District of Palm Beach County and all personnel at each of our art schools recommend that the parent prioritize the Choice Programs application selection according to their child's talent and interest.

4. How do I set up an audition date and time?

First, an application must be received by the Department of Choice Programs and School Choice by the deadline date. All on-time applicants should contact the art schools prior to **January 1, 2009** regarding audition registration.

5. What if my child is ill on the day of the audition?

Auditions are very stressful for parents and students and many students exhibit physical signs of this stress. However, in order to re-schedule an audition, a student must have a documented illness and a doctor's written verification presented to the arts school to which they are applying within **three** school days of the audition. A new audition date and time will be selected by the school **only** if there are more audition dates available.

Transportation Zones

Transportation Zones for Choice Programs In Public Schools

<p>Alexander W. Dreyfoos Jr. School of the Arts* The County (Tri-Rail and designated transportation pick up points)</p>	<p>Forest Hill Community High* North- 45th St.; East- The Intracoastal Waterway; South- Boynton Beach Blvd. & W to N Military Trail (Tri-Rail Service); West- State Road 7, N to Forest Hill Blvd., NW to Southern Blvd., W to Seminole Pratt Whitney Rd. & N to Orange Blvd.</p>
<p>Atlantic Community High* North- Lake Worth Rd; East- The Intracoastal Waterway; South- S.W. 18th St. & Royal Palm Way; West- State Road 7 to the Boynton Beach Canal & east to Jog Rd.</p>	<p>Glades Central Community High* North- Palm Beach/Martin County Line; East- State Road 7 at designated pick-up points; South- Broward/Palm Beach County Line; West- Hendry/Palm Beach County Line</p>
<p>Bak Middle School of the Arts* The County (Tri- Rail and designated transportation pick up points)</p>	<p>Gove Elementary* North- Palm Beach/Martin County Line; East- State Road 7 at designated pick-up points; South- Broward/Palm Beach County Line; West- Hendry/Palm Beach County Line</p>
<p>Bear Lakes Middle* North- 45th Street; East- Intracoastal Waterway; South- 10th Ave N; West- Seminole Pratt Whitney Rd south to Southern Blvd, west to the Florida Turnpike.</p>	<p>Hagen Road Elementary* South- Atlantic Ave.; East- Military Trail; West- State Road 7; North- L-23 Canal (lateral canal north of Boynton Beach Blvd.)</p>
<p>Berkshire Elementary* North- Southern Blvd.; East- The Intracoastal Waterway; South- Forest Hill Blvd.; West- Florida Turnpike</p>	<p>Howell L. Watkins Middle* North-Indianatown Rd.; East- Intracoastal Waterway; South- 45th St.; West- Florida Turnpike south to Northlake Blvd east to Military Trail</p>
<p>Boca Raton Elementary* North- Yamato Rd.; East- The Intracoastal Waterway, south to Palmetto Park Rd, east to the ocean; South- S.W. 18th St. & Royal Palm Way; West- I-95, south to Palmetto Park Rd., west to the Seaboard Coast Line Railroad</p>	<p>Independence Middle* North-Indianatown Rd; E Dixie Hwy (Alt A1A), N to Center St., W to Loxahatchee River Rd., N to Roebuck Rd., W to Central Blvd., then S to Indianatown Rd.; East- Intracoastal Waterway; South- Dr.MLK Jr.Blvd.; West- Alexander Run, S to C-7 Canal (canal S 150th Ct N), E to Turnpike, S to Beeline Hwy.</p>
<p>Boca Raton Community High* North- Atlantic Ave.; East- The Intracoastal Waterway; South- S.W. 18th St. & Royal Palm Way; West- Military Trail, S to Palmetto Park Rd., west to the Florida Turnpike</p>	<p>Jeaga Middle* North- 45th Street; East- Intracoastal Waterway; South- 10th Ave N; West- Seminole Pratt Whitney Rd south to Southern Blvd., west to the Florida Turnpike.</p>
<p>Boca Raton Middle* North- Atlantic Ave; East- Intracoastal Waterway; South- SW 18th St & Royal Palm Way; West- Military Trail, south to Palmetto Park Rd, west to the Florida Turnpike</p>	<p>John F. Kennedy Middle* North- Indianatown Rd., E to Dixie Hwy (Alt. A1A), N to Center St., W Loxahatchee River Rd., N to Roebuck Rd., W to Central Blvd.; East- The Intracoastal Waterway; South- 6th Ave. S; West- Alexander Run, S to the C-7 Canal (canal S of 150th Ct. N), E to Turnpike, S to Northlake Blvd., W to Coconut Rd/Royal Palm Beach Blvd., including Palm Beach County Estates, E Point, Old Marsh & PGA National</p>
<p>Boynton Beach Community High* North- Lake Worth Rd.; East- The Intracoastal Waterway; South- S.W. 18th St. & Royal Palm Way; West- State Road 7</p>	<p>John I. Leonard High* North- 45th St.; East- The Intracoastal Waterway; South- Hypoluxo Rd., west to Jog Rd. & north to Lantana Rd.; West- State Road 7, north to Forest Hill Blvd., northwest to Southern Blvd., west to Seminole Pratt Whitney Rd. & north to Orange Blvd.</p>
<p>Carver Community Middle* North- Lantana Rd.; East- The Intracoastal Waterway; South- S.W. 18th Street & Royal Palm Way; West- State Road 7</p>	<p>Jupiter Community High* North- Indianatown Rd., E to Dixie Hwy (Alt. A1A), N to Center St., W to Loxahatchee River Rd., N to Roebuck Rd., W to Central Blvd., then S to Indianatown Rd.; East- The Intracoastal Waterway; South- Forest Hill Blvd. & NW to Southern Blvd.; West- Alexander Run, S to the C-7 Canal (canal S of 150th Ct. N), E to Turnpike, S to Northlake Blvd., W to Coconut Rd/Royal Palm Beach Blvd</p>
<p>Cholee Lake Elementary* North- Southern Blvd.; East- The Intracoastal Waterway; South- Forest Hill Blvd.; West - State Road 7</p>	<p>Jupiter Middle* North- Indianatown Rd., E Dixie Hwy (Alt. A1A), N to Center St., W to Loxahatchee River Rd., N to Roebuck Rd., W to Central Blvd., then S to Indianatown Rd.; East- The Intracoastal Waterway; South- Dr. MLK Jr. Blvd.; West- Alexander Run, S to the C-7 Canal (canal south of 150th Ct. N), E to the Turnpike S to the Beeline Hwy</p>
<p>Congress Middle* North- Lantana Rd.; East- The Intracoastal Waterway; South- S.W. 18th St. & Royal Palm Way; West- State Road 7.</p>	<p>Lake Shore Middle* North- Palm Bach/Martin County Line; East- State Rd 7 @ designated pic-up points; South- Broward/Palm Beach County Line; West- Henry/Palm Beach County Line.</p>
<p>Conniston Community Middle* North- 45th St.; East- The Intracoastal Waterway; South- Boynton Beach Blvd. & W to N Military Trail (Tri-Rail Service); West- State Road 7, N to Forest Hill Blvd., NW to Southern Blvd., W to Seminole Pratt Whitney Rd. & N to Orange Blvd..</p>	<p>Lake Worth Middle* North- Okeechobee Blvd; East- Intracoastal Waterway; South- Hypoluxo Rd; West- Florida Turnpike</p>
<p>Don Estridge High Tech Middle* North- Lantana Rd.; East- The Intracoastal Waterway; South- S.W. 18th St. & Royal Palm Way; West- State Road 7</p>	<p>Lake Worth Community High* North- 45th St.; East- The Intracoastal Waterway; South- Boynton Beach Blvd., W to N Military Trail (Tri-Rail Service); West- State Road 7, N to Forest Hill Blvd., NW to Southern Blvd., W to Seminole Pratt Whitney Rd., N to Orange Blvd.</p>
<p>Dr. Mary McLeod Bethune Elementary* North- Northlake Blvd; East- Intracoastal Waterway; South- 45th St; West- Military Trail</p>	<p>Lantana Community Middle* North- Okeechobee Blvd; East- Intracoastal Waterway; South- Hypoluxo Rd; West- Florida Turnpike</p>
<p>Dwight D. Eisenhower Elementary* North- Indianatown Rd; East- Intracoastal Waterway; South- Dr. Martin Luther King Jr Blvd; West- Military Trail</p>	<p>Loggers' Run Community Middle* North- Boynton Beach Blvd; East- Intracoastal Waterway; South- SW 18th St & Royal Palm Way; West- State Road 7</p>
<p>Eagles Landing Middle* North- Boynton Beach Blvd; East- Intracoastal Waterway; South- SW 18th St & Royal Palm Way; West- State Road 7</p>	<p>Morikami Park Elementary* North- Lantana Rd.; East- The Intracoastal Waterway; South- S.W. 18th St. & Royal Palm Way; West- State Road 7 to the Boynton Beach Canal & East to Jog Rd.</p>
<p>Forest Park Elementary* North- Boynton Beach Blvd; East- Intracoastal Waterway; South- SW 18th St & Royal Palm Way; West- State Road 7</p>	<p>Northboro Elementary* North- PGA Blvd.; East- The Intracoastal Waterway; South- 10th Ave. North; West- Jog Rd. and Florida Turnpike, including PGA National</p>
<p>North Grade Elementary* North- Summit Blvd. extend to the east; East- The Intracoastal Waterway; South- Lantana Rd.; West- Military Trail</p>	

Transportation Zones

Transportation Zones for Choice Programs In Public Schools

<p>Okeehetee Middle* North- Okeechobee Blvd.; East- The Intracoastal Waterway; South- Lantana Rd.; West- State Road 7 to the Boynton Beach Canal & east to Jog Rd.</p>	<p>Roosevelt Community Middle* North- Indiantown Rd., east to Dixie Hwy (Alt. A1A), north to Center St., west Loxahatchee River Rd., north to Roebuck Rd., west to Central Blvd.; East- The Intracoastal Waterway; South- 6th Ave. S; West- Alexander Run, south to the C-7 Canal (canal south of 150th Ct. N), east to Turnpike, south to Northlake Blvd., west to Coconut Rd/Royal Palm Beach Blvd., including part of Palm Beach County Estates, East Point, Old Marsh & PGA National</p>
<p>Olympic Heights Community High* North- Lantana Rd.; East- The Intracoastal Waterway; South- S.W. 18th St. & Royal Palm Way; West- State Road 7</p>	<p>Royal Palm Beach Community High* North- Northlake Blvd. & Orange Blvd.; East- Jog Rd.; South- Southern Blvd.; West- Belle Glade & Pahokee (designated transportation stops)</p>
<p>Orchard View Elementary* North- Lake Ida Rd.; East- The Intracoastal Waterway; South- Clint Moore Rd.; West- Lyons Rd.</p>	<p>S.D. Spady Elementary* North- Lantana Rd.; East- The Intracoastal Waterway; South- Glades Rd.; West- State Road 7, north to Clint Moore Rd., east to Jog Rd.</p>
<p>Pahokee Elementary* North- Palm Beach/Martin County Line; East- State Road 7 at designated pick-up points; South- Broward/Palm Beach County Line; West- Hendry/Palm Beach County Line</p>	<p>Santaluces Community High* North- Lake Worth Rd.; East- The Intracoastal Waterway; South- S.W. 18th St. & Royal Palm Way; West- State Road 7</p>
<p>Pahokee Middle/Senior High* North- Palm Beach/Martin County Line; East- State Road 7 at designated pick-up points; South- Broward/Palm Beach County Line; West- Hendry/Palm Beach County Line</p>	<p>Seminole Ridge Community High* North- Northlake Blvd.; East- State Road 7/Coconut Blvd.; South- Forest Hill Blvd. & northwest to Southern Blvd.; West- Belle Glade & Pahokee (designated transportation stops)</p>
<p>Palm Beach Central High* North- Okeechobee Blvd., west to Royal Palm Beach Blvd., north to Orange Blvd.; East- Jog Rd.; South- Lantana Rd.; West- State Road 7 to Forest Hill Blvd., Seminole Pratt Whitney Rd. & north to Orange Blvd.</p>	<p>Spanish River Community High* North- Lantana Rd.; East- The Intracoastal Waterway; South- S.W. 18th St. & Royal Palm Way; West- State Road 7</p>
<p>Palm Beach Gardens High* North- Indiantown Rd., east to Dixie Hwy (Alt A1A), north to Center St., west to Loxahatchee River Rd., north to Roebuck Rd., west to Central Blvd., then south to Indiantown Rd.; East- The Intracoastal Waterway; South- Forest Hill Blvd. & northwest Southern Blvd.; West- Alexander Run, south to the C-7 Canal (canal south of 150th Ct. N), east to the Turnpike, south to Northlake Blvd., west to Coconut Rd/Royal Palm Beach Blvd.</p>	<p>Suncoast High* North- Indiantown Rd., east to Dixie Hwy (Alt A1A), north to Center St., west to Loxahatchee River Rd., north to Roebuck Rd., west to Central Blvd., south to Indiantown Rd.; East- The Intracoastal Waterway; South- Forest Hill Blvd., northwest to Southern Blvd.; West- Alexander Run, south to the C-7 Canal (canal south of 150th Ct. N), east to the Turnpike, south to Northlake Blvd., west to Seminole Pratt Whitney Rd., south to Southern Blvd.</p>
<p>Palm Beach Lakes Community High* North- Indiantown Rd., east to Dixie Hwy (Alt A1A), north to Center St., west to Loxahatchee River Rd., north to Roebuck Rd., west to Central Blvd., then south to Indiantown Rd.; East- The Intracoastal Waterway; South- Forest Hill Blvd. & northwest to Southern Blvd.; West- Alexander Run, south to the C-7 Canal (canal south of 150th Ct. N), east to the Turnpike, south to Northlake Blvd., west to Seminole Pratt Whitney Rd. & south to Southern Blvd.</p>	<p>U.B. Kinsey/Palmview Elementary School of the Arts* North- Indiantown Rd., east to Dixie Hwy (Alt. A1A), north to Center St., west Loxahatchee River Rd., north to Roebuck Rd., west to Central Blvd.; East- The Intracoastal Waterway; South- 6th Ave. S; West- Alexander Run, south to the C-7 Canal (canal south of 150th Ct. N), east to Turnpike, south to Northlake Blvd., west to Coconut Rd/Royal Palm Beach Blvd., including part of Palm Beach County Estates, East Point, Old Marsh & PGA National</p>
<p>Palm Beach Public* North- Indiantown Rd., east to Dixie Hwy (Alt. A1A), north to Center St., west Loxahatchee River Rd., north to Roebuck Rd., west to Central Blvd. East- The Intracoastal Waterway; South- 6th Ave. S; West- Alexander Run, south to the C-7 Canal (canal south of 150th Ct. N), east to Turnpike, south to Northlake Blvd., west to Coconut Rd/Royal Palm Beach Blvd., including part of Palm Beach County Estates, East Point, Old Marsh & PGA National</p>	<p>Village Academy* North- Boynton Beach Blvd; East- Intracoastal Waterway; South- Atlantic Ave.; West- El Claire Ranch Rd</p>
<p>Palm Springs Community Middle* North- Okeechobee Blvd.; East- The Intracoastal Waterway; South- Lantana Rd.; West- State Road 7</p>	<p>Watson B. Duncan Middle* North- Indiantown Rd., east to Dixie Hwy (Alt A1A), north to Center St., west to Loxahatchee River Rd., north to Roebuck Rd., west to Central Blvd., then south to Indiantown Rd.; East- The Intracoastal Waterway; South- Dr. Martin Luther King Jr. Blvd.; West- Alexander Run, south to the C-7 Canal (canal south of 150th Ct. N), east to the Turnpike, south to the Beeline Hwy.</p>
<p>Park Vista Community High* North- Lake Worth Rd.; East- The Intracoastal Waterway; South- S.W. 18th St. & Royal Palm Way; West- State Road 7</p>	<p>Wellington Community High* North- Orange Blvd.; East- State Road 7; South- Lake Worth Rd.; West- Seminole Pratt Whitney Rd.</p>
<p>Pine Jog Elementary* North- Southern Blvd.; East- The Intracoastal Waterway; South- 10th Avenue N; West- Florida Turnpike</p>	<p>West Boca Raton Community High* North- Atlantic Ave.; East- Dixie Hwy (LW) south to Swinton Blvd., south to 10th St., east to Dixie Hwy (DB & BR); South- S.W. 18th St. & Royal Palm Way; West- State Road 7</p>
<p>Plumosa Elementary School of the Arts* North- Lantana Road; East- Intracoastal Waterway; South- SW 18th St & Royal Palm Way; West- State Road 7</p>	<p>Westward Elementary* North- Indiantown Rd., east to Dixie Hwy (Alt. A1A), north to Center St., west Loxahatchee River Rd., north to Roebuck Rd., west to Central Blvd.; East- The Intracoastal Waterway; South- 6th Ave. S; West- Alexander Run, south to the C-7 Canal (canal south of 150th Ct. N), east to Turnpike, south to Northlake Blvd., west to Coconut Rd/Royal Palm Beach Blvd., including part of Palm Beach County Estates, East Point, Old Marsh & PGA National</p>
<p>Poinciana Elementary* North- Forest Hill Blvd.; East- The Intracoastal Waterway; South- Palmetto Park Rd. to I-95 & north to Clint Moore Rd.; West- Glades Rd., west to Powerline Rd.</p>	<p>William T. Dwyer High* North- Indiantown Rd., east to Dixie Hwy (Alt A1A), north to Center St., west to Loxahatchee River Rd., north to Roebuck Rd., west to Central Blvd., south to Indiantown Rd.; East- U.S. Hwy 1; South- Forest Hill Blvd. & northwest to Southern Blvd.; West- Alexander Run, south to the C-7 Canal (canal south of 150th Ct. N), east to the Turnpike, south to Northlake Blvd., west to Coconut Road/Royal Palm Beach Blvd.</p>

Choice Schools and Programs

Elementary

Deadline to apply is Friday, **December 19, 2008**

Berkshire Elementary (K-5)

Dual Language/International Studies (Spanish) (p. 12)

Boca Raton Elementary (K-5)

Technology (p. 15)

Cholee Lake Elementary (K-5)

Dual Language/International Studies (Spanish) (p. 12)

Dr. Mary McLeod Bethune Elementary (K-5)

*Prospective International Baccalaureate
Primary Years (p. 13)*

Dwight D. Eisenhower Elementary (K-5)

Montessori (p. 14)

Forest Park Elementary (K-5)

*Prospective International Baccalaureate
Primary Years (p. 13)*

Gove Elementary (K-6)

Dual Language/International Studies (Spanish) (p. 12)

Hagen Road Elementary (K-5)

Dual Language (Spanish) (p. 12)

Morikami Park Elementary (K-5)

International Baccalaureate Primary Years (p. 13)

North Grade Elementary (K-5)

Dual Language (Spanish) (p. 12)

Northboro Elementary (Pre K-6)

Montessori (p. 14)

Orchard View Elementary (K-5)

Dual Language (French) (p. 12)

Pahokee Elementary (K-6)

*Prospective International Baccalaureate
Primary Years (p. 13)*

Palm Beach Public Elementary (K-5)

Orchestral Strings (p. 15)

Pine Jog Elementary (K-5)

*Environmental Science, Technology, Engineering
and Math (p. 12)*

Plumosa Elementary School of the Arts (K-5)

*Dual Language (Spanish) (p. 12)
Visual, Performing and Communication Arts (p. 15)*

Poinciana Elementary (K-5)

Math, Science and Technology (p. 14)

S.D. Spady Elementary (Pre K-6)

Montessori (p. 14)

U.B. Kinsey/Palmview Elementary School of the Arts (K-5)

Visual, Performing and Communications Arts (p. 15)

Village Academy (K-8)

K-12 Small School Continuum Model (p. 13)

Westward Elementary (K-5)

International Baccalaureate Primary Years (p. 13)



Choice Schools and Programs

Middle

Deadline to apply is Friday, **December 19, 2008**

Bak Middle School of the Arts (6-8)

Visual, Performing and Communication Arts (p. 20)

Bear Lakes Middle (6-8)

Pre-Biotechnology (p. 18)

Boca Raton Community Middle (6-8)

Math Academy (p. 17)

Pre-Medical Sciences (p. 20)

Carver Community Middle (6-8)

International Baccalaureate Middle Years (p. 16)

Congress Middle (6-8)

Digital Graphic Design/Electronic Media (p. 17)

Pre-Engineering (p. 17)

Pre-Medical Sciences (p. 20)

Conniston Community Middle (6-8)

Dual Language (Spanish) (p. 16)

Prospective International Baccalaureate Middle Years (p. 16)

Don Estridge High Tech Middle (6-8)

High Technology (p. 16)

*Pre-Culinary Arts **

Eagles Landing Middle (6-8)

Pre-Engineering (Gateway to Technology) (p. 19)

Howell L. Watkins Middle (6-8)

Math, Science & Robotics Academy (p. 17)

Pre-Medical Sciences (p. 20)

Independence Middle (6-8)

Pre-Early Childhood & Teacher Education (p. 18)

Jeaga Middle (6-8)

Pre-Law (p. 19)

John F. Kennedy Middle (6-8)

Prospective International Baccalaureate Middle Years (p. 16)

Jupiter Middle (6-8)

High Technology (p. 16)

Lake Shore Middle (6-8)

Pre-Engineering (Gateway to Technology) (p. 19)

Lake Worth Middle (6-8)

Pre-Engineering (Gateway to Technology) (p. 19)

Pre-Medical Sciences (p. 20)

Lantana Community Middle (6-8)

Pre-Medical Sciences (p. 20)

Pre-Early Childhood & Teacher Education (p. 18)

Loggers' Run Community Middle (6-8)

Pre-Medical Sciences (p. 20)

Okeehetee Middle (6-8)

International Spanish Academy (p. 17)

Pahokee Middle/Senior High (7-8)

International Baccalaureate Middle Years (p. 16)

Palm Springs Community Middle (6-8)

Dual Language (Spanish) (p. 16)

Visual, Performing and Communication Arts (p. 20)

Roosevelt Community Middle (6-8)

Environmental Sciences/GIS (p. 17)

Pre-Engineering (p. 17)

Pre-Medical Sciences (p. 20)

Technology (p. 17)

Village Academy (K-12)

K-12 Small School Continuum Model (p. 17)

Watson B. Duncan Middle (6-8)

Pre-Finance (p. 19)



** Non-Choice In-House Career Academy program at school for attending students.*

Choice Schools and Programs

High

Deadline to apply is Friday, **December 19, 2008**

Alexander W. Dreyfoos Jr. School of the Arts

Visual, Performing and Communication Arts (p. 23)

Atlantic Community High (9-12)*

*Army JROTC****

Construction Academy (p. 21)

*Criminal Justice****

*Early Childhood/Teacher Education Academy****

International Baccalaureate Diploma (p. 29)

Sports Management & Recreation (p. 32)

Boca Raton Community High School (9-12)

*Culinary Arts Academy****

*Medical Sciences Academy****

*Information Technology/Computer Related Academy****

Navy JROTC (p. 26)

Science, Technology, Engineering & Mathematics (p. 35)

Boynton Beach Community High School (9-12)*

Aerospace Science Academy (p. 32)

*Culinary Arts Academy****

Dance Academy (p. 23)

*Early Childhood/Teacher Education Academy****

Information Technology Academy (p. 28)

Theatre Academy (p. 23)

Vocal Academy (p. 23)

Forest Hill Community High (9-12)*

Army JROTC (p. 25)

*Culinary Arts Academy****

Engineering & Technology Academy (p. 34)

*Environmental Science & Technology Academy** (p. 21)*

Information Technology Academy (p. 28)

International Baccalaureate Diploma (p. 29)

Tourism, Hospitality & Resort Management (p. 27)

Glades Central Community High School (9-12)*

Criminal Justice Academy (p. 31)

Engineering & Technology Academy (p. 34)

*Information/Computer Related Academy****

Medical Sciences Academy (p. 26)

John I. Leonard High (9-12)

*Computer Technology Academy** (p. 28)*

*Culinary Arts Academy****

Finance Academy (p. 25)

International Spanish Academy (p. 30)

Jupiter Community High (9-12)

*Army JROTC****

Culinary Arts Academy (p. 27)

*Criminal Justice Academy****

Engineering & Technology Academy (p. 34)

Environmental Research & Field Studies Academy (p. 21)

Information Technology Academy (p. 28)

Medical Sciences Academy (p. 26)

Lake Worth Community High (9-12)*

Air Force JROTC-Aerospace Science (p. 25)

Criminal Justice Academy (p. 31)

Culinary Arts Academy (p.27)

*Construction Academy****

Early Childhood/Teacher Education Academy (p. 24)

*Medical Sciences Academy** (p. 26)*

Olympic Heights Community High (9-12)

*Culinary Arts Academy****

Early Childhood/Teacher Education Academy (p. 24)

Engineering & Technology Academy (p. 34)

*Fashion Design Academy****

Finance Academy (p. 25)

Tourism, Hospitality & Resort Management (p. 27)

Pahokee Middle/Senior High (9-12)

Air Force JROTC- Aerospace Science (p. 25)

International Baccalaureate Diploma (p. 29)

Palm Beach Central High (9-12)

Culinary Arts Academy (p. 27)

Engineering & Technology Academy (p. 34)

Information Technology Academy (p. 28)

Palm Beach Gardens High (9-12)*

*Culinary Arts Academy****

Global Business & Entrepreneurship (p. 23)

Medical Sciences Academy (p. 26)

Navy JROTC (p. 26)

Sports Management & Recreation (p. 32)

Television & Film Production Technology (p. 22)

*Tourism, Hospitality & Resort Management ** (p. 27)*

Palm Beach Lakes Community High (9-12)*

Biotechnology Academy (p. 33)

Center for Pre-Law & Law Related Careers Academy (p. 31)

Early Childhood Teacher Education Academy (p.24)

Medical Sciences Academy (p. 26)

Teacher Education Academy (p. 24)

**U.S. Department of Education Smaller Learning Community Programs*

***This program has been reviewed by the National Career Academy Coalition (NCAC) and the Association of Career and Technical Education (ACTE) and has been awarded the prestigious title of "Model or Certified" for exceeding the National Standards of Practice for Career Academy implementation.*

****Non-choice In-House Career Academy program available at home school for boundaried students.*

Choice Schools and Programs

High

Deadline to apply is Friday, **December 19, 2008**

Park Vista Community High (9-12)

Auto Collision Repair and Refinishing Academy (p. 36)
Automotive Service Technology Academy (p. 36)
*Information Technology/Computer Related Academy****
Medical Sciences Academy (p. 26)
Television & Film Production Technology (p. 22)

Royal Palm Beach Community High (9-12)

Air Conditioning, Refrigeration & Heating Technology (p. 21)
International Business Academy (p. 23)
Medical Sciences Academy (p. 26)

Santaluces Community High (9-12)*

Band/Music Industry Academy (p. 23)
Culinary Arts Academy (p. 27)
Early Childhood/Teacher Education Academy (p. 24)
Fashion Design Academy (p. 22)
Visual Arts/Digital Media and Photography Academy (p. 23)

Seminole Ridge Community High (9-12)

*Army National Defense Cadet Corp. ****
*Automotive Service Technology Academy****
Biotechnology Academy (p. 33)
Construction Academy (p. 21)
*Information Technology/Computer Related Academy****

Spanish River Community High (9-12)

Academy of Entrepreneurship (p. 23)
American History and Law Academy (p.30)
Biotechnology Academy (p. 33)
*Early Childhood/Teacher Education Academy****

Suncoast High (9-12)

Computer Science (p. 28)
Interdisciplinary Program (p. 29)
International Baccalaureate Diploma (p. 29)
Mathematics, Science and Engineering (p. 35)

Village Academy (K-12)

K-12 Small School Continuum Model (p. 30)

Wellington Community High (9-12)

Drafting & Communications Design Academy (p. 33)
Equine/Pre-Veterinary Academy (p. 34)
Marketing Academy (p. 31)

West Boca Raton Community High (9-12)

Culinary Arts Academy (p. 27)
Drafting & Design Academy (p. 33)
Information Technology Academy (p. 28)
Medical Sciences Academy (p. 26)

William T. Dwyer High (9-12)

Army JROTC (p. 25)
Construction Academy (p. 21)
*Culinary Arts Academy****
Early Childhood/Teacher Education Academy (p. 24)
*Finance Academy** (p. 25)*



Newsweek

The School District of Palm Beach County is home to 9 of the top 1000 High Schools in the Nation according to Newsweek. All 9 schools house choice programs. Congratulations on your achievement!

3rd SUNCOAST HIGH (9-12)
33rd ALEXANDER W. DREYFOOS JR SCHOOL OF THE ARTS (9-12)
57th ATLANTIC COMMUNITY HIGH (9-12)
142nd BOCA RATON COMMUNITY HIGH (9-12)
191th SPANISH RIVER COMMUNITY HIGH (9-12)
646th PALM BEACH GARDENS HIGH (9-12)
767th FOREST HILL HIGH (9-12)
828th JUPITER HIGH (9-12)
939th WILLIAM T. DWYER HIGH (9-12)

**U.S. Department of Education Smaller Learning Community Programs*

***This program has been reviewed by the National Career Academy Coalition (NCAC) and the Association of Career and Technical Education (ACTE) and has been awarded the prestigious title of "Model or Certified" for exceeding the National Standards of Practice for Career Academy implementation.*

****Non-choice In-House Career Academy program available at home school for boundaried students.*

Elementary

Dual Language/International Studies

The Dual Language Program offers an enriched education by providing an English/Spanish/French immersion program to students entering kindergarten through fifth/sixth grade. This program shares the same challenging academic and language development standards mandated by the district, and provides students the opportunity to learn to speak, read and write in two languages. Proficiency in multiple languages will enhance these students' future employment opportunities in the global marketplace. The goal of the International Studies Choice Program is to create an environment that promotes equity and positive cross cultural attitudes while students become bilingual and literate in two languages; thus laying the groundwork for future success in the international marketplace.

Berkshire Elementary (K-5)

1060 S Kirk Road
West Palm Beach, FL 33406

https://www.edline.net/pages/Berkshire_Elementary_School
(561) 304-2000

Dual Language/International Studies (Spanish)

Cholee Lake Elementary (K-5)

6680 Dillman Rd.,
Greenacres, FL 33413

https://www.edline.net/pages/Cholee_Lakes_Elementary_School
(561) 383-9600

Dual Language/International Studies (Spanish)

Gove Elementary (K-6)

900 SE Avenue "G"
Belle Glade, FL 33430

<http://www.palmbeach.k12.fl.us/GoveES/>
(561) 993-8700

Dual Language/International Studies (Spanish)

Hagen Road Elementary (K-5)

10439 Hagen Ranch Road
Boynton Beach, FL 33437

https://www.edline.net/pages/Hagen_Road_Elementary_School
561-292-6700

Dual Language (Spanish)

North Grade Elementary (K-5)

824 N "K" Street
Lake Worth, FL 33460

https://www.edline.net/pages/North_Grade_Elementary_School
(561) 202-9300

Dual Language (Spanish)

Orchard View Elementary (K-5)

4050 Germantown Road
Delray Beach, FL 33445

https://www.edline.net/pages/Orchard_View_Elementary_School
(561) 865-3900

Dual Language (French)

Plumosa Elementary School of the Arts (K-5)

1712 NE 2nd Avenue
Delray Beach, FL 33444

<http://www.palmbeach.k12.fl.us/plumosaes/>
(561) 243-1562

Dual Language (Spanish)

Environmental Science, Technology, Engineering & Math

Pine Jog Elementary School has partnered with Florida Atlantic University and Pine jog Environmental Education Center to create the first Leadership in Energy and Environmental Design (LEED) Certified Green Elementary School in Florida, and the only school in the nation with this type of unique partnership.

At Pine Jog Elementary School, there will be focus on environmental science, nature and art. Students will have the opportunity to engage in hands on learning experiences as they explore and discover the wonders of native vegetation and wildlife on 150 acres of Florida habitat. This hands-on, investigative approach requires the student to become an active participant in the learning process. Nature studies will include many opportunities to involve art throughout this integrated curriculum. Innovative teaching strategies will be used to enhance student experiences in the classroom and the field while focusing on the integration of science, nature and art.

Pine Jog Elementary (K-5)

6315 Summit Blvd.
West Palm Beach, FL 33415

https://www.edline.net/pages/Pine_Jog_Elementary
(561) 656-5400



International Baccalaureate Primary Years

Highly motivated children who thrive on academic challenges will flourish in the Primary Years Programme (PYP). This Choice program offers a comprehensive, inquiry-based approach to teaching and learning in an internationally designed model for concurrence in learning, with guidelines on student learning styles, methodologies and assessment strategies. The PYP is a combination of the best research and practices from international schools and includes the study of foreign languages and cultures to enhance the international perspective. The discipline of the PYP learning environment encourages inquiry, creativity and flexibility. Growth toward self-reliance, active scholarly success and responsible citizenship are some of the rewards of this program.

Dr. Mary McLeod Bethune Elementary (K-5)*
1501 Avenue U
Riviera Beach, FL 33404
https://www.edline.net/pages/Dr_M_M_Bethune_ES
(561) 882-7600

Forest Park Elementary (K-5)*
1201 S.W. 3rd Street
Boynton Beach, FL 33435
https://www.edline.net/pages/Forest_Park_ES
(561) 292-6900

Morikami Park Elementary (K-5)
6201 Morikami Park Road
Delray Beach, FL 33484
<http://www.palmbeach.k12.fl.us/MorikamiParkES/>
(561) 865-3960



Pahokee Elementary (K-6)*
560 East Main Place
Pahokee, FL 33476
https://www.edline.net/pages/Pahokee_Elementary_School
(561) 924-6466

Westward Elementary (K-5)
1101 Golf Avenue
West Palm Beach, FL 33401
<http://www.palmbeach.k12.fl.us/WestwardES/>
(561) 802-2130



*Dr. Mary McLeod Bethune Elementary, Forest Park Elementary and Pahokee Elementary are currently implementing the IB Primary Years Programme and are engaged in the IB authorization process.

K-12 Small School Continuum Model

The K-12 Small School Continuum Model at Village Academy is a unique public school model that is designed to provide a continuous and nurturing educational experience for students in a small school environment. Village Academy currently enrolls students in grades Kindergarten through 11th grade and a grade level will be added to the school each year. By the 2010-2011 school year, Village Academy will enroll students in grades Kindergarten through 12th and will encompass an elementary, middle, and high school on one school campus. Additionally, Village Academy offers an extended day program, which is open from 2:00 p.m. to 7:00 p.m., Monday through Friday, with additional extended time on Saturday and during summer months. The extended day program offers structured academic instruction, homework assistance, recreational activities, and a healthy snack each day. Extracurricular activities and clubs include computers, sports, dance, art, and music.

Village Academy (K-12)
400 SW 12th Avenue
Delray Beach, FL 33444
https://www.edline.net/pages/Village_Academy
(561) 243-6100



Math, Science & Technology

The Math, Science and Technology Program uses innovative strategies to motivate the inquisitive child. The students utilize science, math and technology laboratories, as well as other unique interactive learning environments in their daily work. The program has a sixty-seat planetarium, as well as a Space Shuttle Simulator. Access to these areas helps the student achieve academically and develop socially. Students make mathematical and physical discoveries using models they can touch and manipulate in real life experiences. Using an integrated approach to curriculum with science and mathematics as a basis for instruction, students will learn problem solving and logical thinking through the principles studied in the classroom.

Poinciana Elementary (K-5)
1203 N Seacrest Boulevard
Boynton Beach, FL 33435

<https://www.palmbeach.k12.fl.us/PoincianaES/>
(561) 739-5700



Montessori

The Montessori philosophy proposes that every child is born with the strong desire to learn. The program uses a unique method of education that emphasizes the development of the whole child. The Montessori classroom stresses active learning with attractive, academically sequential materials that allow children to develop at their own pace. This prepared environment offers a non-competitive, cooperative learning atmosphere in multi-age classrooms. Students receive a solid foundation in the basic subjects through high-quality, stimulating teaching strategies focused on creative thinking and community-minded problem solving. The Montessori programs are affiliated with the American Montessori Society and all teachers hold a Montessori teaching credential.

Dwight D. Eisenhower Elementary (K-5)
2926 Lone Pine Road
Palm Beach Gardens, FL 33410

https://www.edline.net/pages/Dwight_D_Eisenhower_El
(561) 366-6000

S.D. Spady Elementary (Pre K-6)
901 NW 3rd Street
Delray Beach, FL 33444

https://www.edline.net/pages/S_D_Spady_Elementary_School
561) 454-7800

Northboro Elementary (Pre K-6)
2936 Lone Pine Rd
Palm Beach Gardens, FL 33410

https://www.edline.net/pages/Northboro_Elementary_School
(561) 494-1600



Orchestral Strings

The purpose of the Orchestral Strings Program is to provide instruction in the development of beginning through advanced level skills in orchestral string instruments through the performance and refinement of a variety of orchestral literature in a classroom and ensemble setting. Students will participate in the school's academic curriculum with instruction in Orchestral Strings each year. Extra rehearsal and performance time may be required beyond the school day.

Palm Beach Public Elementary (K-5)

239 Coconut Row

Palm Beach, FL 33480

https://www.edline.net/pages/Palm_Beach_Public_Elementary

(561) 822-0700



Technology

Step into the future! Meeting the technological challenges of the future will require highly specialized skills for our young people. The Technology Choice Program offers unique experiences and opportunities using technology as an educational tool that integrates core academic requirements into a challenging and dynamic curriculum. Computers and other technologies enhance and assist in the learning process and create a highly motivating atmosphere in the school. Students also learn to integrate the use of various technologies into their academic projects, presentations, learning activities and assessments.

Boca Raton Elementary (K-5)

103 SW 1st Avenue

Boca Raton, FL 33432

https://www.edline.net/pages/Boca_Raton_Elementary_School

(561) 338-1454

Visual, Performing & Communications Arts

The Elementary comprehensive arts program provides opportunities to showcase performers. Children who enjoy creative expression through music, theatre, two-dimensional and three-dimensional art, videography, dance and the written word will flourish artistically and academically in the performing, visual and communication arts program. Shining stars fine tune their talents and realize their full potential. Self-discipline, teamwork and personal confidence provide success in the classroom and on the stage.

Plumosa Elementary School of the Arts (K-5)

1712 NE 2nd Avenue

Delray Beach, FL 33444

<http://www.palmbeach.k12.fl.us/plumosaes/>

(561) 243-1562

U.B. Kinsey/Palmview Elementary School of the Arts (K-5)

800 11th Street

West Palm Beach, FL 33401

<http://www.palmbeach.k12.fl.us/UBKinseyPalmviewES/>

(561) 802-2145



Dual Language

The Dual Language Program offers a continuation for students who have been in a Spanish language immersion program at the elementary level. Highly motivated, college-preparatory students are engaged in a challenging academic environment offering a partial Spanish language immersion program with the opportunity to earn high school credits.

Conniston Community Middle (6-8)
673 Conniston Road
West Palm Beach, FL 33405

https://www.edline.net/pages/Conniston_Middle_School
(561) 802-5400

Palm Springs Community Middle (6-8)
1560 Kirk Road
West Palm Beach, FL 33406

https://www.edline.net/pages/Palm_Springs_C_M_S
(561) 434-3300

High Technology

Step into the future! Meeting the technological challenges of the future will require highly specialized skills for our young people. The High Technology Middle School Choice Program offers unique experiences and opportunities using technology as an educational tool that integrates core academic requirements into a challenging and dynamic curriculum. Computers and other technologies enhance and assist in the learning process and create a highly motivating atmosphere in the school. Students also learn to integrate the use of various technologies into their academic projects, presentations, learning activities and assessments.

Don Estridge High Tech Middle (6-8)
1798 NW Spanish River Boulevard
Boca Raton, FL 33431

http://www.edline.net/pages/Don_Estridge_Middle_School
(561) 989-7800

Jupiter Middle (6-8)
15245 N Military Trail
Jupiter, FL 33458

http://www.edline.net/pages/Jupiter_Middle_School
(561) 745-7200

International Baccalaureate Middle Years Programme

The International Baccalaureate Middle Years Programme (IBMYP) provides a framework of academic challenge and life skills appropriate to this state of adolescence. The IBMYP offers a holistic educational approach that emphasizes critical thinking skills, global citizenship and intercultural awareness as well as traditional school subjects. Eight academic subjects are required each year of the IBMYP (Language Arts, Mathematics, Science, Social Studies, Fine Arts, Foreign Language, Technology and Physical Education) and are taught through five themes called Areas of Interaction. The Areas of Interaction are: 1) Approaches to Learning, 2) Community and Service, 3) Health and Social Education, 4) Environment, and 5) Homo Faber (Man the Maker).

Carver Community Middle (6-8)
101 Barwick Road
Delray Beach, FL 33445

https://www.edline.net/pages/Carver_Middle_School
(561) 638-2100

A grade 6-10 program is offered in partnership with Atlantic Community High School

John F. Kennedy Middle (6-8)*
1901 Avenue "S"
Riviera Beach, FL 33404

https://www.edline.net/pages/John_F_Kennedy_Middle_School
(561) 845-4500

A grade 6-10 program is offered in partnership with Suncoast High School.

Conniston Community Middle (6-8)*
673 Conniston Road
West Palm Beach, FL 33405

http://www.edline.net/pages/conniston_Middle_School
(561) 802-5400

A grade 6-10 program is offered in partnership with Forest Hill Community High School

Pahokee Middle/Senior High School (7-8)
900 Larrimore Road
Pahokee, FL 33476

<http://www.palmbeach.k12.fl.us/PahokeeMiddleSrHigh/>
(561) 924-6400

A grade 7-10 program is offered

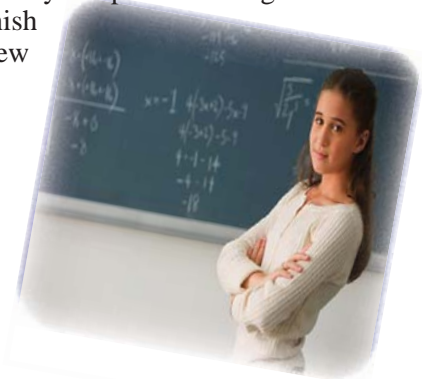
International Spanish Academy

The International Spanish Academy (ISA) is a highly-developed, active-engagement dual language immersion course of study. Schools with the ISA have a formal relationship with the Ministry of Education and Culture in Madrid, Spain. ISA students will be taught by international teachers with an emphasis on community learning groups and conversation. At the elementary level (grades K-5), students are instructed 50% of their school day in Spanish and 50% in English. At the middle and high school levels, two classes are conducted entirely in Spanish. The goal of the ISA is to promote and develop bilingual skills in speaking, reading and writing Spanish and English. A requirement for participation in the ISA is a willingness to learn new perspectives, sounds and cultural aspects.

Okeehchee Middle (6-8)

**2200 Pinehurst Drive
Greenacres, FL 33413**

https://www.edline.net/pages/Okeehchee_Middle_School
(561) 434-3200



K-12 Small School Continuum Model

The K-12 Small School Continuum Model at Village Academy is a unique public school model that is designed to provide a continuous and nurturing educational experience for students in a small school environment. Village Academy currently enrolls students in grades Kindergarten through 11th grade and a grade level will be added to the school each year. By the 2010-2011 school year, Village Academy will enroll students in grades Kindergarten through 12th and will encompass an elementary, middle, and high school on one school campus. Additionally, Village Academy offers an extended day program, which is open from 2:00 p.m. to 7:00 p.m., Monday through Friday, with additional extended time on Saturday and during summer months. The extended day program offers structured academic instruction, homework assistance, recreational activities, and a healthy snack each day. Extracurricular activities and clubs include computers, sports, dance, art, and music.

Village Academy (K-12)

**400 SW 12th Avenue
Delray Beach, FL 33444**

https://www.edline.net/pages/Village_Academy
(561) 243-6100

Math, Sciences & Technology

The Math, Science and Technology Program provides accelerated and enhanced opportunities for the inquisitive student who is looking for an adventure in exploring, discovering and learning through cooperative learning, inquiry process learning, problem solving and integrated units. Students begin algebra studies as early as grade six, enabling some students to earn credit in as many as three high school honors mathematics courses. The interdisciplinary, thematic curriculum is designed for the student who has an affinity for investigation and challenges. Students practice the skills of observation, experimentation, inference, prediction and measurement through hands-on laboratory experiences, research in the sciences and on-site experiences.

Boca Raton Community Middle (6-8)

**1251 NW 8th Street
Boca Raton, FL 33486**

https://www.edline.net/pages/Boca_Raton_Middle_School
(561) 416-8700

Math Academy

Howell L. Watkins Middle (6-8)

**9480 MacArthur Boulevard
Palm Beach Gardens, FL 33403**

https://www.edline.net/pages/H_L_Watkins_Middle_School
(561) 776-3600

Math, Science & Robotics Academy

Congress Middle (6-8)

**101 S Congress Avenue
Boynton Beach, FL 33426**

<https://www.edline.net/pages/CongressMiddleSchool>
(561) 374-5600

Digital Graphic Design/Electronic Media, Pre-Engineering

Roosevelt Community Middle (6-8)

**1900 N Australian Avenue
West Palm Beach, FL 33407**

<http://www.rooseveltmiddle.com/>
(561) 822-0200

Environmental Science / GIS, Pre-Engineering, Technology

Pre-Biotechnology

The Middle School Pre-Biotechnology Program is designed to enable middle school students to explore the connections between science content areas and the rapidly growing biotechnology industry. At the same time, students will develop the knowledge base to ensure successful articulation to high school science academies. The program will provide, through a series of science electives, an understanding of the basic principles which form the foundation of biotechnology. Topics that will be explored include genetics, DNA structure and function, utilization of basic biotechnology tools and techniques, forensics, bioethics, and genetic engineering. Students will also survey the major career area opportunities related to the field of biotechnology.

Bear Lakes Middle (6-8)
3505 Shenandoah Boulevard
West Palm Beach, FL 33409

https://www.edline.net/pages/Bear_Lakes_Middle_School
(561) 615-7700

Pre-Early Childhood & Teacher Education

The Pre-Early Childhood and Teacher Education Career Academy is a three-year preparatory program for the middle school student interested in a career in a child-related occupation. Areas of study will include child development, infant and childhood nutrition, health and safety, communication and interpersonal skills, and youth leadership and career exploration. Opportunities to receive certifications in infant/child CPR and babysitting will be provided. Students will develop the knowledge necessary to transition into the high school Early Childhood/Teacher Education Academy.

Independence Middle (6-8)
4001 Greenway Dr.
Jupiter, FL 33458

https://www.edline.net/pages/Independence_Middle_School
(561) 799-7500

Lantana Middle (6-8)
1225 W. Drew St.
Lantana, FL 33462

https://www.edline.net/pages/Lantana_Middle_School
(561) 540-3400



Pre-Engineering- Gateway to Technology

“Gateway to Technology’s” cutting-edge program addresses the interest and energy of middle school students, while incorporating national standards in math, science and technology. Gateway to Technology is “activity oriented” to show students how technology is used in engineering to solve everyday problems. The instructional units excite and motivate students to use their imagination and teach them to creative and innovative, while gaining the skills they need to develop, produce and use products and services. The Gateway to Technology curriculum provides a project based hands-on learning approach that is exciting and fun for a full-range of students in today’s grade 6-8 classrooms and that relates technology to students’ daily lives. It also promotes communication and collaboration by emphasizing a team approach in the instructional units. The approach utilizes the strengths of each team member to accomplish the goals of the project, while offering students learning challenges at all ability levels.

Eagles Landing Middle (6-8)

19500 Coral Ridge Drive
Boca Raton, FL 33498

<http://www.palmbeach.k12.fl.us/eagleslandings/>
(561) 470-7000

Lake Shore Middle (6-8)

425 W. Canal St. N
Belle Glade, FL 33430

https://www.edline.net/pages/Lake_Shore_Middle_School
(561) 829-1100

Lake Worth Middle (6-8)

1300 Barnett Drive
Lake Worth, FL 33461

https://www.edline.net/pages/Lake_Worth_Middle_School
(561) 540-5500



Pre-Finance

The Pre-Finance Choice Program is designed to give middle school students an opportunity to learn about and prepare for college or careers in business and finance. Emphasis is placed on a college preparatory curriculum that is directly linked to the financial world. Students participate in mentorships and career shadowing experiences that link the resources of business, economics and finance to the students’ education. Specialized courses in finance are required.

Watson B. Duncan Middle (6-8)

5150 117th Court N
Palm Beach Gardens, FL 33418

https://www.edline.net/pages/Watson_B_Duncan_Middle_School
(561) 776-3500



Pre-Law

The Pre-Academy for Pre-Law & Law Related Careers provides experiences to acquaint middle school students with career opportunities and job requirements in law and/or criminal justice related occupations which will enable students to consider career objectives and interests. Students participating in this pre-academy will be provided with basic information about the kinds of jobs and workers involved, the various career paths, occupational hazards, educational requirements, financial rewards, interpersonal and communication skills, and employability skills required for jobs in this area. In addition, students will be exposed to a broad range of law-related topics by teachers and guest speakers and will gain an understanding of how the legal system works and will be better prepared to enter into high school career academies in Law/Criminal Justice with a solid foundation of basic knowledge in this career cluster.

Jeaga Middle (6-8)

3777 N Jog Road
West Palm Beach, FL 33411

https://www.edline.net/pages/Jeaga_Middle_School
(561) 242-8000

Pre-Medical Sciences

The Pre-Medical Sciences program is a three-year preparatory program for the middle school student that will emphasize science, math, and language skills while preparing students to be highly competitive in the medical field. It will also help students in the decision making process of becoming a health professional as they enter high school. The courses offered will include orientation to health occupations, exploration of health occupations and medical skills and services. It is designed to provide students with an academic foundation in basic medical sciences and related careers.

Boca Raton Community Middle (6-8)

1251 NW 8th Street
Boca Raton, FL 33486

https://www.edline.net/pages/Boca_Raton_Middle_School
(561) 416-8700

Congress Middle (6-8)

101 S Congress Avenue
Boynton Beach, FL 33426

<https://www.edline.net/pages/CongressMiddleSchool>
(561) 374-5600

Howell L. Watkins Middle (6-8)

9480 MacArthur Boulevard
Palm Beach Gardens, FL 33403

http://www.edline.net/pageH_L_Watkins_Middle_School
(561) 776-3600

Lake Worth Middle (6-8)

1300 Barnett Drive
Lake Worth, FL 33461

https://www.edline.net/pages/Lake_Worth_Middle_School
(561) 540-5500

Lantana Community Middle (6-8)

1225 W Drew Street
Lantana, FL 33462

https://www.edline.net/pages/Lantana_Middle_School
(561) 540-3400

Loggers' Run Community Middle (6-8)

11584 W Palmetto Park Road
Boca Raton, FL 33428

https://www.edline.net/pages/Loggers_Run_Community_Middle_
(561) 883-8000

Roosevelt Community Middle (6-8)

1900 N Australian Avenue
West Palm Beach, FL 33407

<http://www.rooseveltmiddle.com/>
(561) 822-0200

Visual, Performing & Communication Arts

Creative and artistic opportunities are the main attractions in the arts program. All students enrolled in the school are dedicated to the study of the arts. Intensive study and time is devoted to each student's chosen arts major, while exploring other artistic disciplines in the classroom, in the studio and on stage. The program challenges students to achieve a high standard of artistic professionalism and academic excellence. Students are exposed to professional artists, field trips and artistic performances.

Bak Middle School of the Arts (6-8)*

1725 Echo Lake Drive
West Palm Beach, FL 33407

http://www.edline.net/pages/Middle_School-of_the_Arts
(561) 882-3801

Communication Arts, Dance, Band, Piano/Keyboard, Orchestral Strings, Vocal, Theatre, Visual Art

Palm Springs Community Middle (6-8)

1560 Kirk Road
West Palm Beach, FL 33406

https://www.edline.net/pages/Palm_Springs_C_M_S
(561) 434-3300

Communication Arts, Dance, Band, Hand Bells, Orchestral Strings, Vocal, Theatre, Visual Arts

**Audition Required for Admission*



Agriculture • Food • Natural Resources Cluster

Environmental Science & Field Research

The Environmental Science & Technology Academy at Forest Hill Community High School and the Environmental Research & Field Studies Magnet at Jupiter High School meet the needs of students wishing to pursue an academic curriculum with an emphasis on research and environmental studies. Students will explore and evaluate the many challenges related to local, regional and global environments. All students are involved in a learning-through-discovery approach, developing research and thinking skills. Field studies, as well as a variety of current technologies, are utilized throughout the programs. Ecosystem restoration, water-related problems, agricultural awareness, field research and sustainability in the 21st century are some of the issues students investigate in this program. *All students applying to these programs must meet the following eligibility criteria: 2.5 GPA, 3 Favorable Teacher Recommendations.*

Forest Hill Community High (9-12)

6901 Parker Avenue
West Palm Beach, FL 33405

<http://www.palmbeach.k12.fl.us/ForestHillHS/>
(561) 540-2400

Jupiter Community High (9-12)

500 N Military Trail
Jupiter, FL 33458

<http://www.palmbeach.k12.fl.us/JupiterHS/>
(561) 744-7900

Architecture • Construction Cluster

Air Conditioning, Refrigeration & Heating

The Air Conditioning, Refrigeration and Heating Technology Academy prepares students for college or advanced industry training and for employment in the industry. This high skill, high demand program focuses on broad transferable skills, stresses the understanding of the air conditioning, refrigeration and heating industry and demonstrates elements of the industry such as planning, management, finance, technical and production skills, as well as the underlying principles of technology, labor issues, community issues, health, safety and environmental issues. Upon completion of this program, the student will be prepared to take the state certification examination for air conditioning, refrigeration and heating mechanics. Internships with local air conditioning businesses are offered. *All students applying to the program must meet the following eligibility criteria: 3 Favorable Teacher Recommendations.*

Royal Palm Beach Community High (9-12)

10600 Okeechobee Boulevard
Royal Palm Beach, FL 33411

https://www.edline.net/pages/Royal_Palm_Beach_High_School
(561) 753-4000

Construction

The Construction Academy prepares students for college and for employment in the building construction industry by providing the skills necessary to enter home-building, general contracting and related industries. Academic studies and work experience will be integrated. This program focuses on broad transferable skills, stresses the understanding of all aspects of the building construction industry and demonstrates such elements of the industry as planning, management, finance, technical and production skills, as well as the underlying principles of technology, labor issues, community issues, health, safety and environmental issues. Training will occur in the classroom, lab and at actual job sites. Students will participate in internships as part of the four-year program. *All students applying to these programs must meet the following eligibility criteria: 3 Favorable Teacher Recommendations.*

Atlantic Community High (9-12)

2455 W Atlantic Avenue
Delray Beach, FL 33445

<http://www.palmbeach.k12.fl.us/AtlanticHS/>
(561) 243-1500

William T. Dwyer High (9-12)

13601 N Military Trail
Palm Beach Gardens, FL 33418

https://www.edline.net/pages/William_T_Dwyer_High_School
(561) 625-7800

Seminole Ridge Community High (9-12)

4601 Seminole Pratt Whitney Road
Loxahatchee, FL 33470

<http://www.palmbeach.k12.fl.us/seminoleridgehs/>
(561) 422-2600

Arts • AV/Technology • Communications Cluster

Fashion Design

The Fashion Design Academy is a unique Career Education and College Preparatory program designed to provide high school students with the training and skills necessary for careers in fashion design, fashion merchandising and/or marketing operations. This academy program will prepare high school students for entrance into post secondary education or entrance directly into the workforce. The Fashion Academy has a rich, hands- on curriculum focusing on design skills and a broad array of transferable garment construction techniques. Every student will experience all aspects of garment construction and design starting at entry level with no prior experience required. As students continue through this four year program they will perfect their skills in advanced garment construction, computerized garment design and creative embroidery design using advanced technology to simulate industry standards. **All students applying to this program must meet the following eligibility: 3 Favorable Teacher Recommendations.**

Santaluces Community High (9-12)

6880 Lawrence Road

Lantana, FL 33462

<http://www.palmbeach.k12.fl.us/SantalucesHS/>

(561) 642-6200

Television & Film Production Technology

The Media, Film and Television Production Technology Program is dedicated to providing quality education in the organization and dissemination of ideas through television and film production. Students are taught in professional broadcast studios with high quality equipment. Students profit from the use of recording studios, remote cameras, video recorders, video switching and editing equipment and comprehensive computer graphics to complete academic and extracurricular projects. Students are prepared to function as members of a technical team by participating in activities that simulate the conditions found in television and production studios as well as on-location events. Students take a variety of technical and production television and broadcasting classes, preparing them for post-secondary school, college and careers in television and film production. *All students applying to these programs must meet the following eligibility criteria: 3 Favorable Teacher Recommendations.*

Palm Beach Gardens High (9-12)

4245 Holly Drive

Palm Beach Gardens, FL 33410

<http://www.palmbeach.k12.fl.us/PalmBeachGardensHS/>

(561) 694-7388

Park Vista Community High (9-12)

7900 Jog Road

Lake Worth, FL 33467

<http://www.palmbeach.k12.fl.us/91eeehs/index.htm>

(561) 491-8431



Arts • AV/Technology • Communications Cluster

Visual, Performing & Communications Arts

The Visual, Performing & Communication Arts Program provides unique opportunities for the committed and talented student who has a serious interest in the arts. In-depth study of the arts develop conceptual and technical skills of artistic expression and brings to fruition the students individual interpretations of the world. The arts training is provided by highly trained art teachers as well as professionals and working artists-in-residence. Students participate in extensive highly specialized courses in dance, music, theater, visual arts, communication arts, as well as a full academic program. *All students applying to these programs must meet the following eligibility criteria: 2.0 GPA, 3 Favorable Teacher Recommendations, plus an eligible audition score, if required. A.W. Dreyfoos School of the Arts does not require Teacher Recommendations.*

Alexander W. Dreyfoos Jr. School of the Arts (9-12)*
501 S Sapodilla Avenue
West Palm Beach, FL 33401

<http://www.palmbeach.k12.fl.us/alexanderwdreyfoos/>
(561) 802-6000

Communication Arts, Band, Dance, Film/Photo & Digital Media, Keyboard/Piano, Strings, Theatre, Visual Arts, Vocal

Boynton Beach Community High (9-12)
4975 Park Ridge Boulevard
Boynton Beach, FL 33426
(561) 752-1200

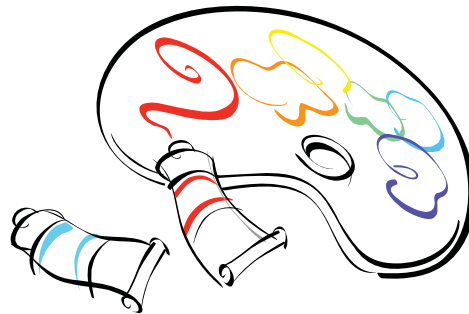
<http://www.palmbeach.k12.fl.us/BoyntonBeachHS/>
Dance, Theatre, Vocal Academy

**Audition Required for Admission*

Santaluces Community High (9-12)
6880 Lawrence Road
Lantana, FL 33462

<http://www.palmbeach.k12.fl.us/SantalucesHS/>
(561) 642-6200

Band/Music Industry Academy, Visual Arts including Digital Media and Photography



Business Management & Administration Cluster

International Global Business & Entrepreneurship

The Global Business & Entrepreneurship Program is designed to complement a rigorous academic course of study with a focus on business and entrepreneurship. This program will prepare students for higher education and entry into today's competitive and technologically sophisticated job market. Students will participate in many hands-on experiences, mentorships, internships, site visitations, local, state and national competitions associated with business. Students will complete internships linking the resources of business, education and community, and students may be required to develop a real international company that imports and exports products with a sister school in another country at some school sites. *All students applying to the program must meet the following eligibility criteria: 2.5 GPA, 3 Favorable Teacher Recommendations.*

Palm Beach Gardens High (9-12)
4245 Holly Drive
Palm Beach Gardens, FL 33410

<http://www.palmbeach.k12.fl.us/PalmBeachGardensHS/>
(561) 694-7388

Royal Palm Beach Community High (9-12)
10600 Okeechobee Boulevard
Royal Palm Beach, FL 33411

https://www.edline.net/pages/Royal_Palm_Beach_High_School
(561) 753-4000

Spanish River Community High (9-12)
5100 Jog Road
Boca Raton, FL 33496

<http://www.palmbeach.k12.fl.us/SpanishRiverHS/>
(561) 241-2200

Education • Training Cluster

Early Childhood & Teacher Education Academy

The Early Childhood and Teacher Education Academy is a unique Career Education and College Preparatory Program where high school students will prepare for careers in child-related occupations, earning high school honors credits and/or Dual Enrollment college credits. Career possibilities may include teaching, child psychology, social worker and day-care owner. The program will prepare students for post-secondary education or immediate entry into the Palm Beach County workforce. Students will gain teaching experiences through internships at area elementary, middle and high schools. *All students applying to these programs listed below must meet the following eligibility criteria: 2.5 GPA and 3 Favorable Teacher Recommendations.*

The following Early Childhood/Teacher Education Academy programs are designed to provide students with the following opportunities: Teaching Experiences in the Laboratory Preschool located on the high school campus, Dual Enrollment at Palm Beach Community College, Bright Futures Gold Seal Vocational Scholars Award, Florida Department of Children and Families (DCF) Child Care Training Certification and Early Childhood Professional Certificate (ECPC) and college credits.

Lake Worth Community High (9-12)

1701 Lake Worth Road

Lake Worth, FL 33460

<http://www.palmbeach.k12.fl.us/LakeWorthHS/>

(561) 533-6300

Early Childhood/Teacher Education

Olympic Heights Community High (9-12)

20101 Lyons Road

Boca Raton, FL 33434

https://www.edline.net/pages/Olympic_Heights_Community_HS

(561) 852-6900

Early Childhood/Teacher Education

Palm Beach Lakes Community High (9-12)

3505 Shiloh Drive

West Palm Beach, FL 33407

<http://www.palmbeach.k12.fl.us/PalmBeachLakesHS/>

(561) 640-5000

Early Childhood Teacher Education

Santaluces Community High (9-12)

6880 Lawrence Road

Lantana, FL 33462

<http://www.palmbeach.k12.fl.us/SantalucesHS/>

(561) 642-6200

Early Childhood/Teacher Education

William T. Dwyer High (9-12)

13601 N Military Trail

Palm Beach Gardens, FL 33418

https://www.edline.net/pages/William_T_Dwyer_High_School

(561) 625-7800

Early Childhood/Teacher Education



The following Teacher Education Academy program includes on-site Dual Enrollment course work beginning in 9th grade with students earning up to 18 college credits. These courses are taught by adjunct instructors from Palm Beach Community College on the Palm Beach Lakes Campus. Students who complete this program are offered a Palm Beach School District contract upon completion of their teaching degree. *In addition to the eligibility criteria, students must have a 3.0 GPA for Dual Enrollment.*

Palm Beach Lakes Community High (9-12)

3505 Shiloh Drive

West Palm Beach, FL 33407

<http://www.palmbeach.k12.fl.us/PalmBeachLakesHS/>

(561) 640-5000

Finance Cluster

Finance

The Academy of Finance is designed to give high school students an opportunity to learn about and prepare for college or careers in business and finance. Emphasis is placed on a college preparatory curriculum that is directly linked to the financial world. Students participate in mentorships, career shadowing and internship programs that link the resources of business, economics and finance to education and to the students. Specialized courses in finance are required. The Academy of Finance is a model program established to promote educational excellence by the National Academy Foundation. *All students applying to these programs must meet the following eligibility criteria: 2.5 GPA, 3 Favorable Teacher Recommendations.*

John I. Leonard High (9-12)

4701 10th Avenue N
Greenacres, FL 33463

<http://www.palmbeach.k12.fl.us/JohnILeonardHS/Main/index.htm>
(561) 641-1200

William T. Dwyer High (9-12)

13601 N Military Trail
Palm Beach Gardens, FL 33418

https://www.edline.net/pages/William_T_Dwyer_High_School
(561) 625-7800

Olympic Heights Community High (9-12)

20101 Lyons Road
Boca Raton, FL 33434

https://www.edline.net/pages/Olympic_Heights_Community_HS
(561) 852-6900

Government • Public Administration Cluster

Air Force JROTC

The Air Force Junior Reserve Officers Training Corps Aerospace Science (AFJROTC) Program is designed to build better citizens, strengthen character, develop leadership and acquaint cadets with the aerospace age and careers in military and civilian aviation. Additionally, the program emphasizes self-discipline. The curriculum is centered around the nature of flight, space exploration and related sciences, such as weather and space technology. Upon completion, students are under no obligation to enlist in the armed forces; however, successful completion of the AFJROTC program allows entry into the armed forces up to two pay grades higher than other enlistees without AFJROTC experience. *All students applying to these programs must meet the following eligibility criteria: 3 Favorable Teacher Recommendations.*

Lake Worth Community High (9-12)

1701 Lake Worth Road
Lake Worth, FL 33460

<http://www.palmbeach.k12.fl.us/LakeWorthHS/>
(561) 533-6300

Pahokee Middle/Senior High (9-12)

900 Larrimore Road
Pahokee, FL 33476

<http://www.palmbeach.k12.fl.us/PahokeeMiddleSrHigh/>
(561) 924-6400

Army JROTC

The Army Junior Reserve Officers Training Corps Program (AJROTC) provides developmental courses in leadership theory, drill and ceremonies, hygiene and first aid, map reading, land navigation, techniques of oral communication, marksmanship and safety, staff function and procedures, service/ROTC opportunities and physical readiness. Students who select this option will enroll in the AJROTC classes each year, as well as a full academic schedule. Upon completion, students are under no obligation to enlist in the armed forces; however, successful completion of the AJROTC program allows entry into the armed forces up to two pay grades higher than other enlistees without AJROTC experience. *All students applying to these programs must meet the following eligibility criteria: 3 Favorable Teacher Recommendations.*

Forest Hill Community High (9-12)

6901 Parker Avenue
West Palm Beach, FL 33405

<http://www.palmbeach.k12.fl.us/ForestHillHS/>
(561) 540-2400

William T. Dwyer High (9-12)

13601 N Military Trail
Palm Beach Gardens, FL 33418

https://www.edline.net/pages/William_T_Dwyer_High_School
(561) 625-7800

The Navy Junior Reserve Officers Training Corps (NJROTC) Program teaches self-discipline, self-confidence and leadership skills to meet life's challenges. The naval science curriculum includes seamanship, oceanography, meteorology, astronomy, radar, sonar electronics and leadership. Instruction consists of formal classroom training supplemented by field trips to various naval facilities. Upon completion, students are under no obligation to enlist in the armed forces; however, successful completion of the NJROTC program allows entry into the armed forces up to two pay grades higher than other enlistees without NJROTC experience. *All students applying to these programs must meet the following eligibility criteria: 3 Favorable Teacher Recommendations.*

Boca Raton Community High (9-12)
1501 NW 15th Court
Boca Raton, FL 33486
https://www.edline.net/pages/Boca_Raton_High_School
(561) 338-1400

Palm Beach Gardens High (9-12)
4245 Holly Drive
Palm Beach Gardens, FL 33410
<http://www.palmbeach.k12.fl.us/PalmBeachGardensHS/>
(561) 694-7388

Health Science Cluster

Medical Sciences

The Medical Sciences Academy offers an innovative, integrated learning environment designed to provide the student with the medical skills and training necessary to succeed in post-secondary healthcare career education and/or to successfully transition into the healthcare workforce. This comprehensive program combines a rigorous academic curriculum with intense clinical and laboratory experience. Student internships at area hospitals and other health care facilities are conducted while under the supervision of academy health sciences staff. *All students applying to these programs must meet the following eligibility criteria: 3.0 GPA, 3 Favorable Teacher Recommendations. Algebra I or Algebra I Honors required.*

Glades Central Community High (9-12)
1001 SW Avenue "M"
Belle Glade, FL 33430
<http://www.palmbeach.k12.fl.us/GladesCentralHS/>
(561) 993-4400
Practical Nursing

Jupiter Community High (9-12)
500 N Military Trail
Jupiter, FL 33458
<http://www.palmbeach.k12.fl.us/JupiterHS/>
(561) 744-7900
Allied Health Assisting, Nursing Assistant, Electrocardiograph Aide, Home Health Aide, Pharmacy Assistant

Lake Worth Community High (9-12)
1701 Lake Worth Road
Lake Worth, FL 33460
<http://www.palmbeach.k12.fl.us/LakeWorthHS/>
(561) 533-6300
Allied Health Assisting, Nursing Assistant, Home Health Aide, Electrocardiograph Aide, Pharmacy Assistant

Palm Beach Gardens High (9-12)
4245 Holly Drive
Palm Beach Gardens, FL 33410
<http://www.palmbeach.k12.fl.us/PalmBeachGardensHS/>
(561) 694-7388
Allied Health Assisting, Nursing Assistant, First Responder, Pharmacy Assistant

Palm Beach Lakes Community High (9-12)
3505 Shiloh Drive
West Palm Beach, FL 33407
<http://www.palmbeach.k12.fl.us/PalmBeachLakesHS/>
(561) 640-5000
Allied Health Assisting, Nursing Assistant, Pharmacy Assistant, Practical Nursing

Park Vista Community High (9-12)
7900 Jog Road
Lake Worth, FL 33467
<http://www.palmbeach.k12.fl.us/91eeehs/index.htm>
(561) 491-8431
Allied Health Assisting, Nursing Assistant, First Responder, Medical Laboratory Assisting, Electrocardiograph Aide, Home Health Aide

Royal Palm Beach Community High (9-12)
10600 Okeechobee Boulevard
Royal Palm Beach, FL 33411
https://www.edline.net/pages/Royal_Palm_Beach_High_School
(561) 753-4000
First Responder, Nursing and Allied Health Assistant

West Boca Community High (9-12)
12811 Glades Road
Boca Raton, FL 33498
<http://www.palmbeach.k12.fl.us/WestBocaRatonHS/>
(561) 672-2001
Allied Health Assisting, Electrocardiograph Aide, First Responder, Home Health Aide, Medical Laboratory Assisting

Hospitality • Tourism Cluster

Culinary Arts

The Culinary Arts curriculum provides the opportunity for students to train for a variety of careers in the high demand field of food service and preparation. Academic and technical studies will be integrated, emphasizing and building proficiency in food production and cooking, cost control, nutrition and sanitation and workplace safety. Practical work experience will stress sanitation and safety, and include quantity cooking, baking, menu development and food preparation. School site restaurants and catering opportunities will further enhance front and back of the house skills as well as restaurant management. Student organizations allow for competitions during the school year. Upon completion of this program, students will earn SafeStaff Food Handler certification, be eligible for Gold Seal scholarship opportunities and employment in the food service industry. *All students applying to these programs must meet the following eligibility criteria: 3 Favorable Teacher Recommendations.*

Jupiter Community High (9-12)

500 N Military Trail
Jupiter, FL 33458

<http://www.palmbeach.k12.fl.us/JupiterHS/>
(561) 744-7900

Lake Worth Community High (9-12)

1701 Lake Worth Road
Lake Worth, FL 33460

<http://www.palmbeach.k12.fl.us/LakeWorthHS/>
(561) 533-6300

Palm Beach Central High (9-12)

8499 W Forest Hill Boulevard
Wellington, FL 33411

<http://www.palmbeach.k12.fl.us/palmbeachcentralhs/>
(561) 304-1000

Santaluces Community High (9-12)

6880 Lawrence Road
Lantana, FL 33462

<http://www.palmbeach.k12.fl.us/SantalucesHS/>
(561) 642-6200

West Boca Community High (9-12)

12811 Glades Road
Boca Raton, FL 33498

<http://www.palmbeach.k12.fl.us/WestBocaRatonHS/>
(561) 672-2001



Tourism, Hospitality & Resort Management

The Tourism, Hospitality & Resort Management Program is a college preparatory program that integrates unique high school courses with practical work experience in the field. Classes stress communications, problem solving, teamwork and computer skills. Students learn about cultures and destinations worldwide while exploring career opportunities in the world's largest industry. Field trips and paid internships allow the student to gain real world experience in the tourism field. The Tourism, Hospitality and Resort Management Choice Program is a model program of over 550 schools nationwide established to promote educational excellence by the National Academy Foundation. *All students applying to these programs must meet the following eligibility criteria: 3 Favorable Teacher Recommendations.*

Forest Hill Community High (9-12)

6901 Parker Avenue
West Palm Beach, FL 33405

<http://www.palmbeach.k12.fl.us/ForestHillHS/>
(561) 540-2400

Palm Beach Gardens High (9-12)

4245 Holly Drive
Palm Beach Gardens, FL 33410

<http://www.palmbeach.k12.fl.us/PalmBeachGardensHS/>
(561) 694-7388

Olympic Heights Community High (9-12)

20101 Lyons Road
Boca Raton, FL 33434

https://www.edline.net/pages/Olympic_Heights_Community_HS
(561) 852-6900

Information Technology Cluster

Computer Science/Computer Technology

Computer Science and Technology Program is designed to meet the needs of students who wish to specialize in the area of computer science, research, engineering or computer technology. Students take accelerated and enriched coursework with an emphasis on high-level math, science and computer science courses, receiving honors or college-level credit. Computer Science and Technology programs additionally include architecture, engineering, business, communications, music, art and physics. Exciting opportunities to explore the community, participate in competitions and solve real world problems are afforded. The unique curriculum and state-of-the-industry technology provides support for students who want to learn to access, manipulate and apply information; to think critically, and to solve problems in today's technological world. *All students applying to these programs must meet the following eligibility criteria: 3.0 Academic GPA, 3 Favorable Teacher Recommendations. Algebra I Honors and Geometry Honors required.*

John I. Leonard High (9-12)
4701 10th Avenue N
Greenacres, FL 33463

<http://www.palmbeach.k12.fl.us/JohnILeonardHS/Main/index.htm>
(561) 641-1200

Suncoast High (9-12)
600 W 28th Street
Riviera Beach, FL 33404

<http://www.palmbeach.k12.fl.us/SuncoastHS/>
(561) 882-3400



Information Technology

The Academy of Information Technology offers an innovative, integrated learning environment focused on computers, technology and communications. The Academy is designed to provide the students with the training and skills necessary to pass the certification examinations for careers such as: Computer Operation, Computer Support, Electronics Technology, Graphic Design, Multimedia & Web Design, Network Systems, PC Support and Word Processing. The rigorous academic study combined with technical training will prepare students for career pathways leading to college placement or the workforce. Students will use printed materials, videos, computer software lessons, demonstration and practical applications, which suit their own learning styles. Specialization opportunities will vary depending upon the location of the academy. *All students applying to these programs must meet the following eligibility criteria: 2.5 GPA, 3 Favorable Teacher Recommendations.*

Boynton Beach Community High (9-12)
4975 Park Ridge Boulevard
Boynton Beach, FL 33426

<http://www.palmbeach.k12.fl.us/BoyntonBeachHS/>
(561) 752-1200

Forest Hill Community High (9-12)
6901 Parker Avenue
West Palm Beach, FL 33405

<http://www.palmbeach.k12.fl.us/ForestHillHS/>
(561) 540-2400

Jupiter Community High (9-12)
500 N Military Trail
Jupiter, FL 33458

<http://www.palmbeach.k12.fl.us/JupiterHS/>
(561) 744-7900

Palm Beach Central High (9-12)
8499 W Forest Hill Boulevard
Wellington, FL 33411

<http://www.palmbeach.k12.fl.us/palmbeachcentralhs/>
(561) 304-1000

West Boca Raton Community High (9-12)
12811 Glades Road
Boca Raton, FL 33498

<http://www.palmbeach.k12.fl.us/WestBocaRatonHS/>
(561) 672-2001

*Accounting, Business Management, PC Support,
Web Design*

Interdisciplinary

Interdisciplinary Program (IDP)

The Interdisciplinary Program (IDP) is designed for the student who wishes to pursue an interdisciplinary college preparatory program. The IDP provides a stimulating course of study for the students who choose a special focus among six curricular strands; Liberal Arts, Information Systems, Business Technology, Drafting Design Technology and Engineering Technology. Many courses of study offer participation in Tech Prep and scholarship opportunities. *All students applying to the program must meet the following eligibility criteria: 3 Favorable Teacher Recommendations.*

Suncoast High (9-12)
600 W 28th Street
Riviera Beach, FL 33404

<http://www.palmbeach.k12.fl.us/SuncoastHS/>
(561) 882-3400

International Baccalaureate

International Baccalaureate (IB)

The International Baccalaureate (IB) Diploma Programme is a two year liberal arts curriculum designed to meet the needs of the highly motivated and academically talented student and at the same time, promote international understanding. Due to its rigorous nature, preparation for the IB program is offered through the IB Middle Years curriculum in the 9th and 10th grade and/or through other accelerated curriculum. The IB diploma is recognized internationally and leads to advanced standing in universities throughout the United States. The School District of Palm Beach County is proud that all four of its Diploma Programmes have met the International Baccalaureate Organization requirements and are fully authorized programmes. *All students applying to these programs must meet the following eligibility criteria: 3.0 Academic GPA, 3 Favorable Teacher Recommendations. Algebra I Honors required and Spanish or French for High School credit recommended.*

Atlantic Community High (9-12)
2455 W Atlantic Avenue
Delray Beach, FL 33445
<http://www.palmbeach.k12.fl.us/AtlanticHS/>
(561) 243-1500

Pahokee Middle/Senior High (9-12)
900 Larrimore Road
Pahokee, FL 33476
<http://www.palmbeach.k12.fl.us/PahokeeMiddleSrHigh>
(561) 924-6400

Forest Hill Community High (9-12)
6901 Parker Avenue
West Palm Beach, FL 33405
<http://www.palmbeach.k12.fl.us/ForestHillHS/>
(561) 540-2400

Suncoast High (9-12)
600 W 28th Street
Riviera Beach, FL 33404
<http://www.palmbeach.k12.fl.us/SuncoastHS/>
(561) 882-3400



International Spanish Academy

International Spanish Academy

The International Spanish Academy (ISA) is a highly-developed, active-engagement dual language immersion course of study. Schools with the ISA have a formal relationship with the Ministry of Education and Culture in Madrid, Spain. ISA students will be taught by international teachers with an emphasis on community learning groups and conversation. At the elementary level (grades K-5), students are instructed 50% of their school day in Spanish and 50% in English. At the middle and high school levels, two classes are conducted entirely in Spanish. The goal of the ISA is to promote and develop bilingual skills in speaking, reading, and writing Spanish and English. A requirement for participation in the ISA is a willingness to learn new perspectives, sounds, and cultural aspects. *All students applying to these programs must meet the following eligibility criteria: 2.5 GPA, 3 Favorable Teacher Recommendations.*

John I. Leonard High (9-12)

4701 10th Avenue N
Greenacres, FL 33463

<http://www.palmbeach.k12.fl.us/JohnILeonardHS/Main/index.htm>
(561) 641-1200

K-12 Small School Continuum Model

K-12 Small School Continuum Model

The K-12 Small School Continuum Model at Village Academy is a unique public school model that is designed to provide a continuous and nurturing educational experience for students in a small school environment. Village Academy currently enrolls students in grades Kindergarten through 11th grade and a grade level will be added to the school each year. By the 2010-2011 school year, Village Academy will enroll students in grades Kindergarten through 12th and will encompass an elementary, middle, and high school on one school campus. Additionally, Village Academy offers an extended day program, which is open from 2:00 p.m. to 7:00 p.m., Monday through Friday, with additional extended time on Saturday and during summer months. The extended day program offers structured academic instruction, homework assistance, recreational activities, and a healthy snack each day. Extracurricular activities and clubs include computers, sports, dance, art, and music.

Village Academy (K-12)

400 SW 12th Avenue
Delray Beach, FL 33444

https://www.edline.net/pages/Village_Academy
(561) 243-6100

Law • Public Safety • Security Cluster

Legal Services

The Gilder Lehrman American History and Law Academy promotes the study and appreciation of American history and the legal framework that has helped to define it. It is a program designed to cultivate and promote knowledge and appreciation of American political, cultural and economic foundations. This program will prepare students in legal theory and practical application of the law to help individuals in our society. Classes will foster the importance of economic and geographical relationships and increase awareness of the richness and diversity in American society. Students are exposed to primary and secondary documents through various publications and traveling exhibits, as well as lectures by eminent historians. In addition, students will participate in field experiences through trips to museums and historical sites. An opportunity to manifest their new found wealth of knowledge will come through state and national competitions. *All students applying to these programs must meet the following eligibility criteria: 2.5 GPA, 3 Favorable Teacher Recommendations.*

Spanish River Community High (9-12)

5100 Jog Road
Boca Raton, FL 33496

<http://www.palmbeach.k12.fl.us/SpanishRiverHS>
American History & Law Academy

Law • Public Safety • Security Cluster

Pre-Law & Law Related Careers

Pre-Law, Criminal Justice and Law-Related programs are designed for students who are interested in careers in law, criminal justice, legal service and public affairs. Students participate in internships in government agencies, law offices and law enforcement facilities. Students are exposed to a broad range of law-related issues by teachers, guest speakers and field trips, as they gain an in-depth understanding of how the legal system impacts every aspect of society. Community partnerships create outstanding school-to-work experiences in such areas as courts, law enforcement, corrections, probation and justice. *All students applying to these programs must meet the following eligibility criteria: 2.5 GPA, 3 Favorable Teacher Recommendations.*

Glades Central Community High (9-12)
1001 SW Avenue “M”
Belle Glade, FL 33430

<http://www.palmbeach.k12.fl.us/GladesCentralHS/>
(561) 993-4400
Criminal Justice

Lake Worth Community High (9-12)
1701 Lake Worth Road
Lake Worth, FL 33460

<http://www.palmbeach.k12.fl.us/LakeWorthHS/>
(561) 533-6300
Criminal Justice

Palm Beach Lakes Community High (9-12)
3505 Shiloh Drive
West Palm Beach, FL 33407

<http://www.palmbeach.k12.fl.us/PalmBeachLakesHS/>
(561) 640-5000
Center for Pre-Law & Law Related Careers



Marketing Sales and Service Cluster

Marketing

The Marketing program is designed to prepare students for employment or advanced training in the marketing and sales industry. This program focuses on broad, transferable skills and stresses understanding and demonstration of the following elements of the marketing industry: planning, management, technical and production skills, underlying principles of technology, labor issues, community issues, and health, safety, and environmental issues. *All students applying to these programs must meet the following eligibility criteria: 2.5 GPA, 3 Favorable Teacher Recommendations.*

Wellington Community High (9-12)
2101 Greenview Shores Blvd.
Wellington, FL 33414

http://www.palmbeach.k12.fl.us/Wellington_High_School
(561) 795-4900



Marketing Sales and Service Cluster

Sports Management & Recreation

The Sports Management and Recreation Program provide students the opportunity to pursue a course of study leading to college degrees in sports management, marketing, recreation, health and fitness. Students take courses that stress communication, problem solving, teamwork, business and technology, as well as participation in paid summer internships. For hands on experiences students plan and run at least one sporting event. Through paid internships and special projects students apply business knowledge learned in their classes and in the community. *All students applying to these programs must meet the following eligibility criteria: 2.5 GPA, 3 Favorable Teacher Recommendations.*

Atlantic Community High (9-12)

2455 W Atlantic Avenue
Delray Beach, FL 33445

<http://www.palmbeach.k12.fl.us/AtlanticHS/>
(561) 243-1500

Palm Beach Gardens High (9-12)

4245 Holly Drive
Palm Beach Gardens, FL 33410

<http://www.palmbeach.k12.fl.us/PalmBeachGardensHS/>
(561) 694-7388



Science • Technology • Engineering • Math Cluster

Aerospace Science

Boynton Beach Community High School and Embry-Riddle Aeronautical University (ERAU) have partnered to create a unique curriculum option for students throughout the school district. The Boynton Aerospace Science Academy (BASA) offers a rigorous academic program in the fields of aviation, aeronautical science, and aviation maintenance. Each student will have the opportunity to earn dual credit, college and high school, for the BASA courses taken at Boynton Beach Community High School. This exciting and innovative academy provides our students with the latest in educational advancements, current technologies, and crucial job skills all from ERAU professors.

The benefits to this partnership are widespread. Students will receive instruction from ERAU professors which will prepare them for college and/or a professional trade in aeronautics. Parents will profit from savings in tuition costs. Embry-Riddle Aeronautical University will have the opportunity to educate and groom its own quality recruiting pool. *All students applying to these programs must meet the following eligibility criteria: 2.5 GPA, 3 Favorable Teacher Recommendations.*

Boynton Beach Community High (9-12)

4975 Park Ridge Boulevard
Boynton Beach, FL 33426

<http://www.palmbeach.k12.fl.us/BoyntonBeachHS/>
(561) 752-1200

Science • Technology • Engineering • Math Cluster

Biotechnology

The Biotechnology Academy is a program offered in a state-of-the-art facility that will offer students the opportunity to prepare for a career path and the challenges of college. The students will have a wide variety of experiences including the opportunity to “gown-up” and work in a clean room. They will also be able to experiment with plants while studying the science of hydroponics in the school’s hydroponics greenhouse. Technology will be infused into almost all aspects of the curriculum. This new academy will also work to establish partnerships with biotech companies in the area. *All students applying to these programs must meet the following eligibility criteria: 2.5 GPA, 3 Favorable Teacher Recommendations.*

Palm Beach Lakes Community High (9-12)
 3505 Shiloh Drive
 West Palm Beach, FL 33407
<http://www.palmbeach.k12.fl.us/PalmBeachLakesHS/>
 (561) 640-5000

Spanish River Community High (9-12)
 5100 Jog Road
 Boca Raton, FL 33496
<http://www.palmbeach.k12.fl.us/SpanishRiverHS/>
 (561) 241-2200

Seminole Ridge Community High (9-12)
 4601 Seminole Pratt Whitney Road
 Loxahatchee, FL 33470
<http://www.palmbeach.k12.fl.us/seminoleridgehs/>
 (561) 422-2600



Drafting & Design

The Drafting and Design Academy offers two distinct strands, designed to challenge students with laboratory and classroom based curriculum which promotes the use of critical thinking and computer technology skills. The content and activities in these programs include entrepreneurship, safety, and leadership skills. In the Drafting courses of study, students will employ the use of AutoCAD Computer Aided Design software for architectural, mechanical and 3D projects. In addition, students will take a sequence of challenging courses preparing them for post secondary school, college, and careers in the architectural and engineering fields. In the Communications Technology Strand the study of the processes, uses, and technical skills found in visual technologies (both conventional and digital procedures), multimedia productions, computer animation and graphics, web page design, electronic media and other new and emerging technologies will be incorporated. This strand of study focuses on the understanding and demonstration of the technological tools, machines, instruments, materials, processes and systems in business and industry. Both strands and courses of study offer an in-depth curriculum that will prepare students to successfully enter college or the workforce. *All students applying to the program must meet the following eligibility criteria: 3 Favorable Teacher Recommendations.*

Wellington Community High School (9-12)
 2101 Greenview Shores Blvd.
 Wellington, FL 33414
http://www.palmbeach.k12.fl.us/Wellington_High_School/
 (561) 795-4900

West Boca Community High (9-12)
 12811 Glades Road
 Boca Raton, FL 33498
<https://www.edline.net/pages/WestBocaRatonHS/>
 (561) 672-2001

Engineering & Technology Academy-Project Lead the Way (PLTW)

The Engineering Technology Academies are affiliated with Project Lead The Way (PLTW), a not-for-profit organization that forms partnerships with public schools, colleges and universities and the private sector to increase the quantity and quality of engineers and engineering technologists graduating from our educational system. PLTW has developed a four-year sequence of courses which, when combined with college preparatory mathematics and science courses in high school, introduces students to the scope, rigor and discipline of engineering and engineering technology prior to entering college. The courses are: Introduction to Engineering Design, Digital Electronics, Principles of Engineering, Computer Integrated Manufacturing, Civil Engineering and Architecture and Engineering Design and Development. The rigorous academic study combined with technical training addresses major challenges facing the industry and workforce of the 21st century. Relationships with members of the business and industry community including engineering companies, technological firms and educational institutions provide mentorships and expertise. *All students applying to the program must meet the following eligibility criteria: 2.5 GPA, 3 Favorable Teacher Recommendations.*

Forest Hill Community High (9-12)

6901 Parker Avenue

West Palm Beach, FL 33405

<http://www.palmbeach.k12.fl.us/ForestHillHS/>
(561) 540-2400

Glades Central Community High (9-12)

1001 SW Avenue "M"

Belle Glade, FL 33430

<http://www.palmbeach.k12.fl.us/GladesCentralHS/>
(561) 993-4400

Jupiter Community High (9-12)

500 N Military Trail

Jupiter, FL 33458

<http://www.palmbeach.k12.fl.us/JupiterHS/>
(561) 744-7900

Olympic Heights Community High (9-12)

20101 Lyons Road

Boca Raton, FL 33434

https://www.edline.net/pages/Olympic_Heights_Community_HS
(561) 852-6900

Palm Beach Central High (9-12)

8499 W Forest Hill Boulevard

Wellington, FL 33411

<http://www.palmbeach.k12.fl.us/palmbeachcentralhs/>
(561) 304-1000



Equine/Pre-Veterinary

The Equine/Pre-Veterinarian Academy at Wellington Community High School provides students with an opportunity to pursue a rigorous, accelerated science program to prepare them for veterinary medicine and/or animal sciences at the college level. Due to the rigorous science curriculum, this program is also appropriate for students preparing for a college program in pre-medicine or any field requiring a strong foundation in upper level sciences. Topics include horse anatomy and physiology, behavior, parasitology, disease, lameness, etc. Academy students will be required to complete twenty hours of community service in an animal-based area during each year of high school. Academy students will also be required to intern with an animal health care facility and complete a research project in animal sciences/medicine as a senior in high school. *All students applying to this program must meet the following eligibility criteria: 3.0 GPA, 3 Favorable Teacher Recommendations, Algebra I or Algebra I Honors required as a prerequisite.*

Wellington Community High School (9-12)

2101 Greenview Shores Boulevard

Wellington, FL 33414

https://www.edline.net/pages/Wellington_High_School
(561) 795-4900



Science • Technology • Engineering • Math Cluster

Math, Science, Engineering Program (MSE)

The MSE Program is designed to meet the needs of highly talented students wishing to pursue an accelerated curriculum with emphasis on mathematics, science, and engineering. The academic background provided will allow MSE graduates to be highly competitive in colleges and universities recognized as exemplary in the fields of mathematics, engineering, medicine, oceanography, physics, chemistry, biomedicine, and aeronautics. MSE graduates typically earn between one and two years of college credit.

MSE students take Pre-Calculus, Advanced Placement (AP) Calculus, Calculus II, Calculus III, Differential Equations, and Matrix Theory; the last four classes are dual-enrolled at local universities and earn both high school and college credit. Students participate in scientific research, take introductory courses in mechanical, civil, and electrical engineering, and participate in two, three-week long summer institutes that focus on state-of-the-art engineering practices, for which they earn college credit. In addition, students sit for AP Exams in Physics, Chemistry, Biology, Statistics, Calculus and several liberal arts related subjects of their choosing. A special diploma is awarded to students who successfully complete the MSE Program. *All students applying to MSE must meet the following criteria: 3.0 Academic GPA, 3 Favorable Teacher Recommendations. Algebra I & II Honors and Geometry Honors required. Honors Algebra II or Honors Geometry may be taken during the summer between 8th and 9th grade.*

Suncoast High (9-12)
 600 W 28th Street
 Riviera Beach, FL 33404
<http://www.palmbeach.k12.fl.us/SuncoastHS/>
 (561) 882-3400

Science, Technology, Engineering & Math (STEM)

This four-year pre-university course of study is designed to meet the needs of highly-talented students wishing to pursue a rigorous curriculum with an emphasis on mathematics, science, engineering, medicine, oceanography, physics and chemistry. Entering ninth graders must have successfully completed honors level instruction in Algebra I, Algebra II and Geometry. Courses prepare students for college-level instruction and advanced placement testing. Exciting and unique opportunities to explore community and real world problems are provided. *All students applying to these programs must meet the following eligibility criteria: 3.0 Academic GPA, 3 Favorable Teacher Recommendations.*

Boca Raton Community High (9-12)
 1501 NW 15th Court
 Boca Raton, FL 33486
<https://www.bobcatnews.com> (See STEM or NJROTC links)
 (561) 338-1400



Transportation Distribution • Logistics Cluster

Auto Collision Repair and Refinishing

The Automotive Collision Repair and Refinishing Academy combines hands-on training in a fully integrated, state-of-the-art facility. This Academy prepares students for employment in the auto body and refinishing industry and for post-secondary education. The program content will include the following: basic trade skills, refinishing skills, sheet metal repair skills, frame and unibody squaring and aligning, use of fillers, paint systems and undercoats, related welding skills, related mechanical skills, trim-hardware maintenance, glass servicing and other miscellaneous repairs. The course content will also include training in communication, leadership, human relations and employability skills and safe efficient work practices. *All students applying to the program must meet the following eligibility criteria: 3 Favorable Teacher Recommendations.*

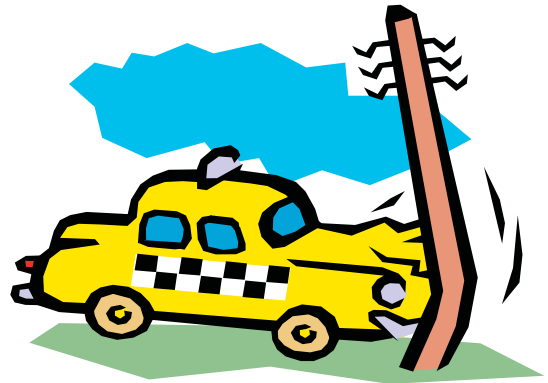
Park Vista Community High (9-12)

7900 Jog Road

Lake Worth, FL 33467

<http://www.palmbeach.k12.fl.us/91eeehs/index.htm>

(561) 491-8431



Automotive Service Technology

The Automotive Service Technology Academy combines hands-on training in a fully integrated, computerized, state-of-the-art facility. This Academy prepares students for employment and/or specialized training in the automotive industry. This program focuses on understanding and demonstration of the following elements of the automotive industry: planning, management, finance, technical and product skills, as well as the underlying principles of technology, labor issues, community issues and health, safety and environmental issues. Academy graduates will be equipped to pass the automotive specialization certification tests in the following areas: Automotive Lubrication, Automotive Brake System, Automobile Suspension and Steering, Automotive Electrical/Electronic System and Automotive Engine Performance. *All students applying to the program must meet the following eligibility criteria: 3 Favorable Teacher Recommendations.*

Park Vista Community High (9-12)

7900 Jog Road

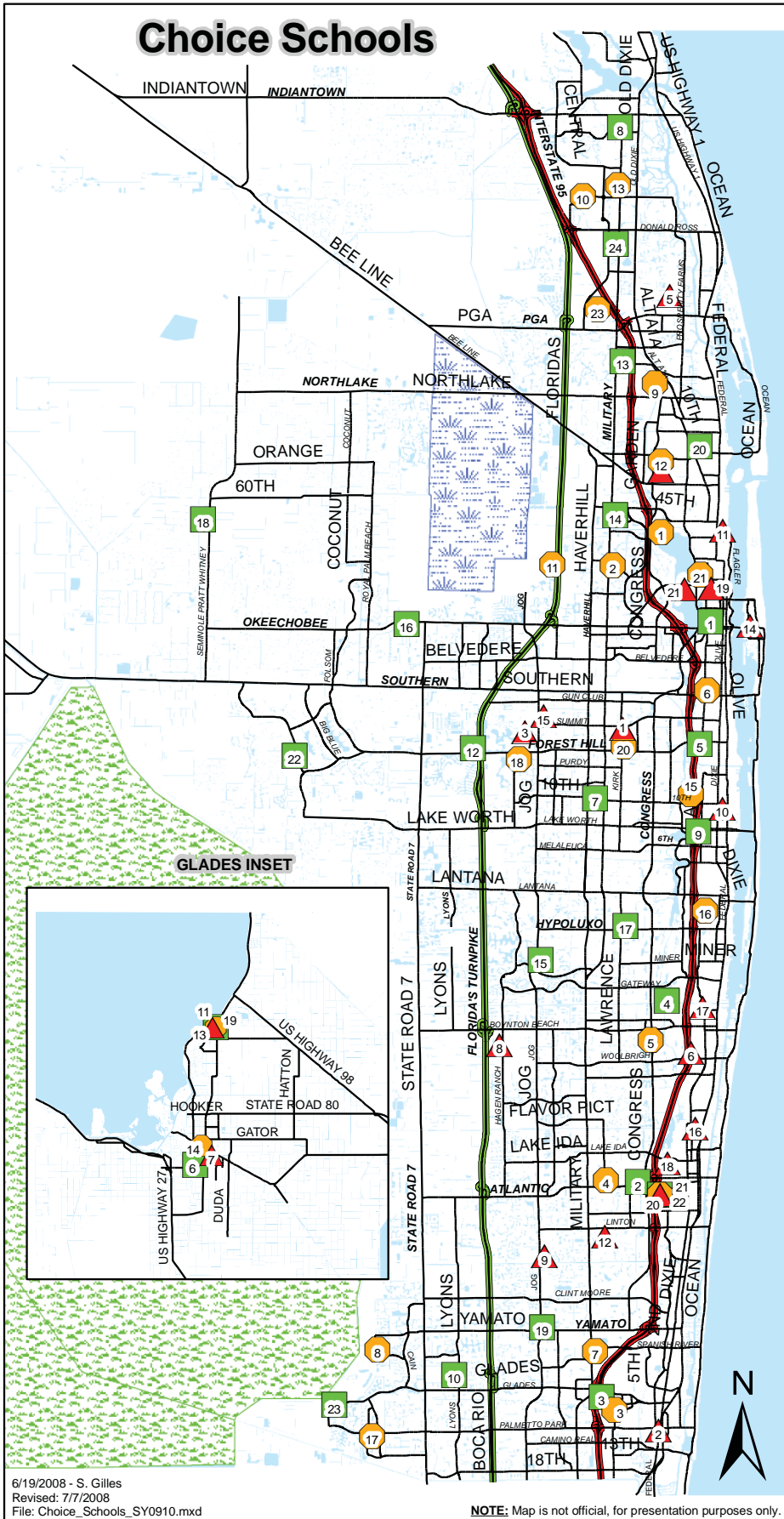
Lake Worth, FL 33467

<http://www.palmbeach.k12.fl.us/91eeehs/index.htm>

(561) 491-8431



Choice Schools



Map Id	Elementary Schools
1	BERKSHIRE
2	BOCA RATON
3	CHOLEE LAKE
4	DR MARY McLEOD BETHUNE
5	DWIGHT D. EISENHOWER
6	FOREST PARK
7	GOVE
8	HAGEN ROAD
9	MORIKAMI PARK
10	NORTH GRADE
11	NORTHBORO
12	ORCHARD VIEW
13	PAHOKEE
14	PALM BEACH PUBLIC
15	PINE JOG
16	PLUMOSA SCHOOL OF THE ARTS
17	POINCIANA
18	S.D. SPADY
19	U.B. KINSEY / PALMVIEW SCHOOL OF THE ARTS
20	VILLAGE ACADEMY
21	WESTWARD


Map Id	Middle Schools
1	BAK MIDDLE SCHOOL OF THE ARTS
2	BEAR LAKES
3	BOCA RATON
4	CARVER
5	CONGRESS
6	CONNISTON
7	DON ESTRIDGE
8	EAGLES LANDING
9	HOWELL L. WATKINS
10	INDEPENDENCE
11	JEAGA
12	JOHN F. KENNEDY
13	JUPITER
14	LAKE SHORE
15	LAKE WORTH
16	LANTANA
17	LOGGERS RUN
18	OKEEHHEELIE
19	PAHOKEE MIDDLE / HIGH
20	PALM SPRINGS
21	ROOSEVELT
22	VILLAGE ACADEMY
23	WATSON B. DUNCAN

Map Id	High Schools
1	A.W. DREYFOOS HIGH SCHOOL OF THE ARTS
2	ATLANTIC HIGH
3	BOCA RATON
4	BOYNTON BEACH
5	FOREST HILL
6	GLADES CENTRAL
7	JOHN I. LEONARD
8	JUPITER
9	LAKE WORTH
10	OLYMPIC HEIGHTS
11	PAHOKEE MIDDLE / HIGH
12	PALM BEACH CENTRAL
13	PALM BEACH GARDENS
14	PALM BEACH LAKES
15	PARK VISTA COMMUNITY
16	ROYAL PALM BEACH
17	SANTALUCES
18	SEMINOLE RIDGE
19	SPANISH RIVER
20	SUNCOAST
21	VILLAGE ACADEMY
22	WELLINGTON
23	WEST BOCA RATON COMMUNITY
24	WILLIAM T. DWYER

Legend

- Major Roadways
- Florida's Turnpike
- Interstate 95
- Loxahatchee Refuge
- Water Catchment Area
- Waterways

Palm Beach County School District
 Planning Department - GIS



3300 Forest Hill Blvd.
 West Palm Beach, FL 33406

6/19/2008 - S. Gilles
 Revised: 7/7/2008
 File: Choice_Schools_SY0910.mxd

NOTE: Map is not official, for presentation purposes only.

Elementary School Open House Dates

School	Date	Time	Location
Berkshire Elementary	Please call (561) 304-2000 to schedule tour		
Boca Raton Elementary	9/17/2008	6:30 PM-7:30 PM	On Campus
Cholee Lake Elementary	Please call (561) 383-9600		
Dr Mary McLeod Bethune Elementary	Please call (561) 494-2600 to schedule tour		
Dwight D. Eisenhower Elementary	11/20/2008	6:00 PM	On Campus
Forest Park Elementary	11/5/2008	6:00 PM	Cafeteria
Gove Elementary	9/3/2008 11/11/2008	5:30 PM 9:00 AM-12:00 PM	Cafeteria Family Center
Hagen Road Elementary	Please call (561) 292-6700 to schedule tour		
Morikami Park Elementary	11/17/2008	6:30 PM-7:30 PM	Cafeteria
North Grade Elementary	10/3/2008	8:30 AM	Media Center
Northboro Elementary	12/7/2008	2:00 PM	Media Center
Orchard View Elementary	10/07/2008	6:30 PM-8:00 PM	Cafeteria
Pahokee Elementary	9/3/2008	6:00 PM	On Campus
Palm Beach Public Elementary	10/24/2008	8:00 AM-2:00 PM	On Campus
Pine Jog Elementary	10/22/2008 11/11/2008	8:30 AM-10:00 AM 6:00 PM-8:00 PM	On Campus
Plumosa Elementary School of the Arts	12/2/2008	6:00 PM	Cafeteria
Poinciana Elementary	9/17/, 11/19, 12/11	6:00 PM	Media Center
S.D. Spady Elementary	11/06/2008	6:00 PM	Media Center
U.B. Kinsey/Palmview School of the Arts	Please call (561) 802-2145 to schedule tour		
Village Academy	Please call (561) 243-6128		
Westward Elementary	11/11/2008	9:00 AM-11:00 AM	Media Center



Middle School Open House Dates

School	Date	Time	Location
Bak Middle School of the Arts	Please call (561) 882-3801		
Bear Lakes Middle	9/24/2008	6:00 PM-8:00 PM	On Campus
Boca Raton Community Middle	11/13/2008	6:30 PM-7:30 PM	Cafeteria
Carver Community Middle	11/11/2008	6:00 PM	Cafeteria
Congress Middle	11/13/2008	7:00 PM	Cafeteria
Conniston Community Middle	10/16/2008 & 11/6/2008	6:00 PM	Cafeteria
Don Estridge High Tech Middle	12/4/2008	6:30 PM-8:30 PM	Gymnasium
Eagles Landing Middle	11/11/2008	6:00 PM - 8:00 PM	On Campus
Howell L. Watkins Middle	11/12/2008	6:00 PM	On Campus
Jeaga Middle	11/12/2008	6:00 PM	Media Center
John F. Kennedy Middle	11/14/2008	6:00 PM	Media Center
Jupiter Middle	11/15/2008	1:00 PM	On Campus
Lake Worth Middle	10/30/2008 & 11/20//2008	6:00 PM	On Campus
Lantana Community Middle	11/11/2008	7:00 PM	On Campus
Loggers' Run Community Middle	11/20/2008	7:00 PM-8:30 PM	Cafeteria
Okeehetee Middle	11/6/2008	6:00 PM	Media Center
Pahokee Middle/Senior High	9/16/2008	6:00 PM-8:00 PM	On Campus
Palm Springs Community Middle	11/6/2008	7:00 PM	Cafeteria
Roosevelt Community Middle	11/6/2008	6:00 PM-8:00 PM	Cafeteria
Village Academy	Please call (561) 243-6128 to schedule		
Watson B. Duncan Middle	11/20/2008	5:30 PM	Gymnasium



High School Open House Dates

School	Date	Time	Location
A.W. Dreyfoos Jr. School of the Arts	12/1/2008	6:00 PM-8:00 PM	On Campus
Atlantic Community High	11/2/2008	3:00 PM-5:00 PM	Auditorium
Boca Raton Community High	10/16/2008	6:00 PM-8:00 PM	Auditorium
Boynton Beach Community High	11/18/08 & 12/2/08	6:30 PM	Theater
Forest Hill Community High	11/19/2008	6:00 PM	Cafeteria
Glades Central Community High	11/4/2008	6:00 PM	On Campus
John I. Leonard High	11/19/2008	7:00 PM	Auditorium
Jupiter Community High	11/19/2008	6:30 PM	Auditorium
Lake Worth Community High	12/2/2008	6:00 PM	On Campus
Olympic Heights Community High	10/8/2008	6:30 PM	Media Center
Pahokee Middle/Senior	9/16/2008	6:00 PM	On Campus
Palm Beach Central High	11/13/2008	6:30 PM	Auditorium
Palm Beach Gardens High	12/7/2008	2:00 PM-4:00 PM	Cafeteria
Palm Beach Lakes Community High	11/11/08 & 12/9/08	6:30 PM	Little Theater
Park Vista Community High	11/18/2008	6:30 PM	Auditorium
Royal Palm Beach Community High	12/07/08	2:00 PM-4:00 PM	Cafeteria
Santaluces Community High	11/06/2008	6:00 PM-8:00 PM	On Campus
Seminole Ridge Community High	12/4/2008	6:30 PM	Auditorium
Spanish River Community High	11/12/2008	6:00 PM	Auditorium
Suncoast High	12/7/2008	1:00 PM-3:00 PM	On Campus
Village Academy	Please call (561) 243-6128 to schedule a tour		
Wellington Community High	11/11/2008	7:00 PM	Cafeteria
West Boca Raton Community High	2 Academies per day		
<i>Culinary Arts/Information Tecnology</i>	11/11/2008	6:00 PM	Theater
<i>Drafting & Design Academy/Medical Sciences Academy</i>	11/12/2008	6:00 PM	Theater
William T. Dwyer High	11/19/2008	6:30 PM	Auditorium

Mission Statement

Career Education in the School District of Palm Beach County is a planned program of career and technical courses and learning experiences that links educator, business and the community in preparing all students with the knowledge and skills for lifelong learning and successful careers in a global society.

Why Career Education?

Students participating in Career Education programs in the School District of Palm Beach County will graduate with career training in high wage, high demand occupations as well as a set of strong workplace competencies that today's workforce demands from its employees. Career Education provides a solid foundation to help build futures for students by integrating academic, critical thinking, technical and organizational skills that are relevant to the real world. Students will leave Career Education programs with the proper skills to make informed decisions for a future career. For more information please visit www.palmbeach.k12.fl.us/careered.

Career Education encompasses the development of knowledge, skills and attitudes through a planned program of learning experiences in education and training settings that will assist students to make informed decisions about future career options.

Career Education in Palm Beach County is:

- Intentional
- Developmental
- Comprehensive
- Available to all students

For more information, please visit www.palmbeach.k12.fl.us/careered

What is a Choice Career Academy?

It requires a student to go through the district application selection process to participate in a specialized program available at a school "different" from the school in which they were zoned to attend.

What is an In-House Academy?

In-House Career Academy is a specialized program at a school in which the student is "normally" zoned to attend-- it is already at the student's home school. For entry into an In-house Academy, students should contact their school counselor or the school's Career Academy Coordinator.

Is there a difference in curriculum between an In-House Academy and a Choice Academy?

No. Curriculum and programs of study are exactly the same.

Career Education

The following schools have been reviewed by the National Career Academy Coalition (NCAC) and the Association of Career and Technical Education (ACTE) and have been awarded the prestigious title of “Model Career Academy” or “Certified.”

In order to achieve this outstanding recognition the evaluated career academies possessed competent, enthusiastic and dedicated team members and proved that students are a priority. All academies could be described as supportive smaller learning communities that personalized the education for each student and had an open door policy for parents. These academies were sensitive to ensuring that their course offerings led to Florida occupational Completion Points and that Advanced Placement courses were offered.



High School	Academy Recognized	Model or Certified
Atlantic	Criminal Justice Career Academy	Model
Forest Hill	Environmental Science	Model
John I. Leonard	Computer Technology Career Academy	Model
Lake Worth	Pre-Medicine and Allied Health Academy	Model
Palm Beach Gardens	Tourism, Hospitality, and Resort Management Career Academy	Model
Palm Beach Lakes	Medical Sciences Career Academy	Certified
Seminole Ridge	Construction Career Academy	Certified
West Boca Raton	Culinary Arts Career Academy	Model
William T. Dwyer	Career Academy of Finance	Model

What is a Charter School?

Charter schools are public schools operating under a performance charter with the local school board. Charter schools function independently of the school district and are exempt from some state and local regulations and mandates controlling local schools. In return they are held strictly accountable for the academic and financial performance of the school and are monitored by the district for compliance to their charter. The intent of the charter school legislation is to increase access to high-quality education, offer choices within the public school system for parents and students, and encourage innovative teaching practices and community/parent involvement in education.

The Purpose of Charter Schools shall be to:

- Improve school learning;
- Increase learning opportunities for all students with special emphasis on expanded learning experiences for students who are identified as academically low achieving;
- Encourage the use of different and innovative learning methods;
- Require the measurement of learning outcomes and create innovative measurement tools;

Charter Schools may also:

- Increase choice for all students and their families;
- Establish a new form of accountability for schools;
- Make the school the unit for improvement; and
- Create new professional opportunities for teachers, including the opportunity to own the learning program at the school site.

Transportation

The charter school shall ensure that transportation is not a barrier to equal access for all students residing within a reasonable distance of the charter school. This distance is defined in each Charter Agreement with the local school board.

Student Admission & Eligibility

The charter school shall enroll an eligible student who submits a timely application, unless the number of applications exceed the capacity of a program, class, grade level, or building. In such cases, all applicants shall have an equal chance of being selected through a random selection process.

A charter school may limit enrollment only to target the following student populations:

- Students within specific age groups or grade levels
- Students considered at risk of academic failure

Students with disabilities and students served in English for Speakers of Other Languages programs (ESOL) shall have an equal chance of being selected for enrollment in a charter school.

Interested applicants should contact the charter school directly to apply for admission. For a list of Charter Schools please visit [www.palmbeachschools.org/Information Directory.htm](http://www.palmbeachschools.org/InformationDirectory.htm) and click on the link for Charter Schools.

Charter Schools

Charter Schools and Addresses	Area Code 561 Ph # Fax #	Students Served FY05 Grades to be Added	Capacity	Charter Schools and Addresses	Area Code 561 Ph # Fax #	Students Served FY05 Grades to be Added	Capacity
Academy for International Studies 757 Prosperity Farms Rd North Palm Beach, FL 33408	Ph: 776-1130 Fax: 776-0975	Grade 6 International Studies	225	G-STAR School of the Arts for Motion Pictures and TV 2065 Prairie Rd., Bld. J West Palm Beach, FL 33406	Ph:967-2023 Fax: 386-6275	Grades 9-12 S.A.C.S. Accredited	700
Academy for Positive Learning 128 North C Street Lake Worth, FL 33460	Ph: 585-6104 Fax: 585-7849	Grades 6-8	300	Glades Academy of Agricultural & Ecological Studies, Inc. (dba: Glades Academy) 1200 E. Main Street Pahokee, FL 33476	Ph:924-9402 Fax:924-9279	Grades K-5	240
Boca Raton Charter School 414 NW 35th Street Boca Raton, FL 33431	Ph: 750-0437 Fax 750-7880	Grades K-5 Official International Baccalaureate Candidate Status	300	Guided Path Academy 1199 West Lantana Road Lantana, FL 33462	Ph: 588-2800 Fax:588-0870	Grades K-5	100
Bright Futures International 757 Lighthouse Drive North Palm Beach, FL 33408	Ph: 776-3794 Fax:776-0975	Grades K-5 International Studies	250	Gulfstream Goodwill L.I.F.E. Academy 3800 South Congress Avenue Bethesda Service Center Boynton Beach, FL 33437	Ph: 259-1000 FAX:259-1004	Ages 14-22 TMH or EMHSpecial Diploma Option 1 or 1	75
Chancellor Charter School at Lantana 600 East Coast Avenue, So. Lantana, FL 33462	Ph: 585-1189 Fax: 585-1166	Grades K-5 General Curriculum	470	Gulfstream Goodwill TRANSITION 950 North Congress Ave Riviera Beach, FL 33403	PH: 863-1297 FAX: 863-1373	Ages 17-22 (Developmental Special Diploma Option 1 or 1	120
Charter School of Boynton Beach 7887 N. Federal Hwy. Boca Raton, FL 33487	Ph: 995-4880 FAX 995-4009	Grades K-6 General Curriculum	150	Hope Learning Community of Riviera Beach, Inc. 21 West 22nd Street Riviera Beach, FL 33404	Ph:848-7575 Fax:881-4668	Grades K-5 International Studies	140
Delray Youth Vocational 601 N Congress Ave. Ste. 110 Delray Beach, FL 33445	Ph: 266-2206 Fax: 266-2208	Grades 9-12 Ages 16-21 At Risk Students	49	Inlet Grove Community High School, Inc. 7071 Garden Road Riviera Beach, FL 33404	Ph: 881-4600 Fax:881-4668	Grades 9-12	750
Ed Venture Charter School 117 East Coast Avenue Hypoluxo, FL 33462	Ph:582-1454 Fax:547-9682	Ages 16-22 ESE, School-to-Work	100	JFK Medical Center 4696 Davis Road Lake Worth, FL 33461	Ph: 868-6100 Fax:963-4697	Grades K-5 School-in-the-Workplace	548
Everglades Preparatory Academy Charter School 183 South Lake Avenue Pahokee, FL 33476	Ph:924-3002 Fax:924-3013	Grades 9-12	250	Joseph Littles-Nguzo Saba 5829 Corporate Way, 2nd Floor West Palm Beach, FL 33407	Ph: 689-9970 Fax:682-1342	Grades K-8 Afro-centric, At- Risk Students	300

Charter Schools

Charter Schools and Addresses	Area Code 561 Ph # Fax #	Students Served FY05 Grades to be Added	Capacity	Charter Schools and Addresses	Area Code 561 Ph # Fax #	Students Served FY05 Grades to be Added	Capacity
Lakeside Academy 716 South Main Street Belle Glade, FL 33430	Ph:993-5000 Fax:993-5001	Grades K-5 Basic instruction	150	Potentials South Charter School 701 NW 35th Street Boca Raton, FL 33430	Ph: 395-2012 Fax:395-4606	Ages 3 to 10 years ESE Physically Impaired	15
Leadership Academy West 2030 South Congress Ave. West Palm Beach, FL 33408	Ph: 434-0996 Fax: 434-0575	Grades 9 -12	130	Renaissance Learning Center 5800 Corporate Way West Palm Beach, FL 33406	Ph: 640-0270 Fax:640-0272	Pre-K - Age 14 ESE Autism as Primary Handicap	60
Life Skills Center of PB, Inc. 600 N Congress Ave, Ste.560 Delray Beach, FL 33445	Ph: 279-1354 Fax:266-9274	Grades 9 -12 Ages 16 -22 At Risk and Drop out - High School Diploma	600	Riviera Beach Maritime Academy 251 W. 11th Street Reviera Beach, Fl 33404	Ph: 841-7600 Fax:841-7626	9 - 12	120
Montessori Academy of Early Enrichment, Inc. 2925 10th Ave N., Suite108 Lake Worth, FL 33461	Ph: 649-0004 Fax:649-0964	Pre-K ESE ages 3 to 7	65	Seagull Academy for Independent Living (SAIL) Lakeside United Methodist Church 1801 12th Ave S Lake Worth, FL 33460	Ph: 540-8110 Fax: 540-8330	High School Ages 14-22 At-Risk ESE (EMH) Students	65
Palm Beach Academy for Learning 6201 S. Military Trail Lake Worth, Fl 33463	Ph: 649-7505 Fax 649-7507	ESE Autism	350 Projected Enrollment	Independent Living (SAIL) c/o Lakeside United Methodist Church 1801 12th Avenue, South Lake Worth, FL 33460	Ph: 540-8110 Fax: 540-8330	High School Ages 14-22 At- Risk ESE (EMH) Students	
Palm Beach Maritime 7719 South Dixie Hwy West Palm Beach, FL 33405	Ph: 547-3775 Fax:540-5177	Grades K-8 Nautical Theme	500	South Tech Academy 1300 SW 30th Avenue Boynton Beach, FL 33426	Ph: 369-7004 Fax:369-7024	Grades 9-12	1400
Palm Beach School for Autism, Inc 1199 W. Lantana Road Cottage #16 Lantana, Fl 33462	Ph: 582-1645 Fax:582-5177	Pre-K Autism as Primary Handicap	30	Toussaint L'Ouverture High School for Arts & Social Justice 14610-A S. Military Trail Delray Beach, FL 33483	Ph: 495-9991 Fax:495-1877	Grades 9-12	250
Potentials Charter School 1201 Australian Ave Riviera Beach, FL 33404	Ph: 842-3213 Fax:863-4352	Ages 3 to 10 years ESE Physically Impaired	30	Western Academy Charter School 500 F-K Royal Palm Plaza Royal Palm Beach, FL 33411	Ph: 792-4123 Fax: 792-9905	Grades K-8	360

Home Education

The Home Education Office registers and ensures statutory compliance for all home-schooled students in Palm Beach County. A student must be of school age to be enrolled in Home Education. When establishing a Home Education Program, the parent/guardian has up to 30 days to submit a Notice of Intent to the Superintendent of Schools/Home Education Designee. All correspondence should be faxed to (561) 434-8447 or mailed to:

**Home Education Office
School District of Palm Beach County
3308 Forest Hill Boulevard, Suite C-124
West Palm Beach, FL 33406**

For more information, please visit www.palmbeachschools.org/homeEducation.htm or contact the Home Education Office at (561) 434-8052.

No Child Left Behind

What is a Title I School?

Title I is a part of the No Child Left Behind (NCLB) Act. The primary purpose of Title I is to ensure equal educational opportunity for all children, regardless of socioeconomic background. Title I schools are identified by the percentage of students in the school who qualify for free or reduced price meals.

How are NCLB Choice Options Determined?

The No Child Left Behind (NCLB) Act provides opportunities for choices in a child's education when a school does not meet Adequate Yearly Progress (AYP). AYP is an individual state's measure of progress toward the goal of 100 percent of students achieving proficiency in state academic standards in at least reading/language arts and math. If a Title I School does NOT make AYP for two or more years, the school is identified as a School In Need of Improvement (SINI). Parents are then offered NCLB Choice Options for their child's education.

What are the Palm Beach County NCLB Options?

The following NCLB Choice Options are available for students attending SINI schools:

2 Years of Not Making AYP

Remain in the assigned school and receive Supplemental Educational Services (FREE Tutoring) from an outside private provider

3 or more years of Not Making AYP

Remain in the assigned school and receive Supplemental Educational Services (FREE Tutoring) from an outside private provider

OR

Transfer to Another School

(Transportation provided-District identifies more than one school from which to choose)

NCLB Options Procedures

In April, parents of students attending a SINI Title I school will be notified by letter sent from the school site if their child's school may become eligible for NCLB Choice Options. Interested parents must return the letter to the child's current school. When school status is confirmed by the Florida Department of Education in the summer, parents who have returned the interest letter will receive information with transfer schools and/or eligibility for SES. Parents may then decide if they would like to accept the NCLB Choice assignment.

Department of Choice Programs and School Choice

Choice Programs Staff

Goldie Bryant
Beth Gillespie
Carol Giovennetti
Lesline Gregory
Fanny Johnson
Michelle Martin
Debbie Mickle
Denell Nelson
Mireille Petit-Frère
Alicia Salvador
Robin Shanak
Nicole Smith
Julie Thompson
George Woodring
James Woolridge

Career Education Staff

Miguel Benavente
Chuck Green
Tom Hession
Nancy Jackson
Neva Jordan
Tara Kobel
Sue Larsen
Jeraline Marsh
Pam Paikai
Jim Politis
Susan Pradetto
Benjamin Ramos II
Mollie Rhodes
Elizabeth Shapiro
Sylvia Tricarico

