



2006-2008 School Health Services Plan

Submit by September 30, 2006

Contact Person: Below please indicate a contact person who was involved in the preparation of this plan and can answer questions if they arise.

Name: Carol Ann Devine **Credentials:** ARNP

Position: School Health Division Assistant Director

Agency: Palm Beach County Health Department

Mailing Address: 826 Evernia Street

City / Zip Code: West Palm Beach 33401

Email: Carol_Devine@doh.state.fl.us

Phone/FAX: (561) 355-4970/(561) 355-4472

School Health Services Plan for 2006-08***Legislative Authority:***

- School Health Services Act, s. 381.0056, F.S.
- Comprehensive School Health Services, s. 381.0057, F. S.
- Full Service Schools, s. 402.3026, F.S.
- Background screening requirements for school health services personnel, s. 381.0059, F.S.
- Chapter 64F-6.001 - .006, F.A.C.
- Nurse Practice Act, ss. 464.001 – 464.027, F.S.
- Administration of medication and provision of medical services, s. 1006.062, F.S.
- Immunization against communicable diseases, s. 1003.22, F.S.
- School-entry health examinations, s. 1003.22, F.S.
- K-12 student and parent rights, s. 1002.20, F.S.
- Student records and reports, s. 1002.22, F.S.
- Background screening requirements for certain non instructional school district employees and contractors, s. 1012.465, F.S. (Jessica Lundsford Act)

The purpose of the School Health Services Plan is:

1. To assist local School Health Programs and the School Health Advisory Committees (SHAC) in planning and evaluating school health services.
2. To assist the Florida Department of Health (DOH) and Florida Department of Education (DOE) in identifying the health needs of school-age children for program planning.
3. To provide a basis for accountability for compliance with legislative requirements for the School Health Services Program.

Introduction:

The School Health Services Plan is mandated by the School Health Services Act, s. 381.0056, F.S. and provides an organized system for planning and reporting on all school health services, regardless of the funding source. The School Health Services Plan is a two-year document designed to facilitate the establishment of local strategies to implement activities mandated by law to meet the health of Florida's students and improve their chances for success in school. The law requires that this plan be collaboratively developed by the county health department (CHD), the local school district (LSD), and local SHAC and to include a process for data collection by which the program can be evaluated.

The following steps should help school health coordinators to facilitate the planning process:

1. The CHD is the lead agency for coordinating the plan development with the LSD.
2. Section 381.0056(4), F.S requires SHAC input in the development of the plan.
3. The plan should have input from the CHD administrative staff, school nurses, students, school district administrative staff, principals, parents and community agencies.
4. The signature page verifies that each involved entity has participated in the development of this plan, and reviewed and approved the Annual School Health Services Report.

**2006-2008 School Health Services Plan and 2005-2006 School Health Services Report
SIGNATURE PAGE**

My signature below indicates that I have reviewed and approved the plan and report that is being submitted:

CHD Administrator/Director	Jean M. Malecki, MD, MPH, FACPM	
	Name	
	Signature	Date
CHD School Health Coordinator	Marsha Fishbane, MD, ScM, FAAP	
	Name	
	Signature	Date
School District School Health Coordinator	Cathy Burns, Ph.D	
	Name	
	Signature	Date
School Board Chair Person	Tom Lynch, Chairman	
	Name	
	Signature	Date
School District Superintendent	Arthur C. Johnson, Ph.D	
	Name	
	Signature	Date
School Health Advisory Committee Chair Person	Ronald Romear, MD	
	Name	
	Signature	Date
Public / Private Partner #1 Health Care District	Anne Hedges, RN, MSN, N.C.S.N.	
	Name	
	Signature	Date
Public / Private Partner #2 Boca Raton Community Hospital	Heidi Stewart, RN	
	Name	
	Signature	Date
Public / Private Partner #3		
	Name	
	Signature	Date

DIRECTIONS

Part I: The provision of Basic School Health Services is mandated by: (1) School Health Services Act, s. 381.0056, F.S.; (2) Chapter 64F-6.001 - .006, F.A.C.; (3) Administration of medication, s. 1006.062, F.S.; (4) Provision of medical services, s. 1006.062, F.S.; (5) Immunization against communicable diseases, s. 1003.22, F.S.; (6) School-entry health examinations, s. 1003.22, F.S.; K-12 Student and parent rights, s. 1002.20, F.S.; Student records and reports, s. 1002.22, F.S.

Part II: Comprehensive School Health Services Projects (CSHSP) are mandated by s. 381.0057, F.S. Counties without a CSHSP should not complete this section.

Part III: The provision of Full Service School (FSS) Health Services is mandated by s. 402.3026, F.S.

Part IV is the Program Quality Improvement section for local school health programs and the state school health program office.

Note: The Comprehensive School Health projects, Full Service Schools, and Public-Private Partnership schools are also required to meet the mandates of basic school health services (s. 381.0056, F.S.).

Under each of the goals is a table with five columns to plan for the delivery of local school health services. The intent of each column is as follows:

QUALITY IMPROVEMENT (QI) STANDARDS: These standards represent minimum activities conducted to meet the requirements of the law. Identify how these QI issues or standards will be addressed in the strategies and measurement columns of the table.

STRATEGIES: Details the actions the CHD and school district have agreed upon in order to meet the mandated requirements, conduct internal QI, and prepare for QI visits. In some cases, different strategies may be established for schools with Comprehensive School Health Projects than for schools served only by the basic program.

RESPONSIBLE PERSON(S)/AGENCY: Identifies the specific person and agency responsible for each strategy.

INFORMATION SOURCE: Identifies the information source used to assess progress for each quality improvement standard:

- Annual School Health Services Report (Annual Report)
- Health Management Component (HMC)
- Quality Improvement (QI) Review – supporting documentation for internal program reviews per the CHD QI Plan and periodic verification by the School Health Services Program office
- Community Health Assessment Resource Tool Set (CHARTS)
- Vital Statistics
- Financial Information System (FIS)

PERFORMANCE MEASURE: The specific items or data elements used to measure performance for each quality improvement standard.

SUBMISSION DATES: By September 30, 2006, submit the following documents via email to HSF_SH_Feedback@doh.state.fl.us, and cc your School Health Liaison:

- 2006-2008 School Health Services Plan
- 2005-2006 Annual School Health Services Report
- A completed Program Monitoring Tool for all 2005-2006 contracts
- Scanned signature page

Submit executed, signed school health contracts and memoranda of agreement for 2006-2007 via interoffice mail or US mail to:

Via Interoffice Mail or U.S. Mail: School Health Services (HSFFC), Department of Health, 4052 Bald Cypress Way, Bin A-13, Tallahassee, FL 32399-1723

Via Delivery Service: School Health Services (HSFFC), Department of Health, 4025 Esplanade Way, Rm. 125-04, Tallahassee, FL 32311-7829

PART I: SCHOOL HEALTH SERVICES PLAN FOR BASIC SERVICES FOR 2006 - 2008

Part I-A. To have a school health services plan jointly developed by the County Health Department (CHD) the Local School District (LSD) and the School Health Advisory Committee (SHAC). Any person who provides services under a school health services plan must complete level 2 screening (s. 381.0056, F.S., s. 381.0059, F.S., Chapter 64F- 6.001-.006, F.A.C.) Background screening is required for certain non-instructional school district employees and contractors (s. 1012.465, F.S. - Jessica Lunsford Act).				
Quality Improvement (QI) Standards	Strategies	Responsible Person(s)/ Agency	Information Source	Performance Measure
Active SHAC which has broad representation from the community. It is recommended that SHACs adopt the eight component Coordinated School Health Program model that will also conform to required school wellness policies.	SHAC meets monthly during the school year and membership includes representation from all eight component areas for the Coordinated School Health Program model. This model has served as a basis for prior SHAC activities and surveys. At the September 19, 2006 meeting, SHAC officially adopted the model and this year will continue its promotion in SHAC goals and activities.	PBC Health Department, School Health Division SHAC Chair and Vice Chair	QI Review	Number of SHAC meetings during the school year Composition of membership Minutes of meetings
School Health Plan collaboratively developed by CHD, LSD and SHAC	Plan developed in collaboration with school health partners and will be coordinated by the Health Department and presented to SHAC before submission.	PBC Health Department, School Health Division, SHAC	QI Review	A signed School Health Services Plan and any revisions on file at the CHD and LSD, and the School Health program Office
Participation in the school district wellness plan to promote activities that improve nutrition and increase physical activity	SHAC members are invited and actively participate on the local wellness promotion task force that is responsible for oversight and implementation of the local wellness policy adopted May 31, 2006 by the school board.	PBC Health Department, School Health Division, SHAC	QI Review	Documentation of district-wide wellness activities
A school health services satisfaction survey for students, parents and school staff	SHAC Survey Committee develops satisfaction survey for student, parents and teachers and is administered in the spring at randomly selected schools (elem., middle and high). Results are analyzed and presented the following school year to SHAC membership.	PBC Health Department, School Health Division School District of PBC SHAC Survey Committee	QI Review	Summary of the satisfaction survey, and any policy changes made based on survey
Level 2 background screening of school health employees compliant with Florida Statutes within 12 months of employment	All school health personnel will complete a Level 2 background screening upon hire. A process for assurance is in place.	All school health personnel will complete a Level 2 background screening when hired.	QI Review	Documentation of employee level 2 screening on file at employing agency

PART I-B. To provide health appraisals for the identification and management of actual or potential health problems which include but are not limited to nursing assessments, nutrition assessments, vision, hearing, scoliosis, and growth and developmental screening. To inform parents or guardians each year about planned health services or screenings and the process for including or exempting students from those services or screenings (s. 381.0056, F.S., Rule 64F-6.001-008, F.A.C.). To obtain Medicaid reimbursement for services provided to eligible students under the certified school-match program (s. 409.9122, F.S.).

Quality Improvement (QI) Standards	Strategies	Responsible Person(s)/ Agency	Information Source	Performance Measure
Parental notification of services provided and opportunity to opt in or out of services for their children	At the beginning of each school year the School District provides a Student & Family Handbook (<u>Attachment A</u>) with instructions on the available health services and how to opt out of health services. In addition, the New and Returning Student Registration Form specifically provides information on health screenings and offers the opt-out option.	School District of PBC	QI Review	List of students, and completed opt out/in forms on file
Written parental requests for exemptions from intrusive/invasive services and screenings in students records	Information entered into TERMS System and retrieved as needed for screenings/services.	School District of PBC, data processor	Annual Report	Number of students excluded from services and screenings at parental request
Health services provided in school health rooms	Services in each school include: <ul style="list-style-type: none"> • Injury/illness assessment and intervention • Medication administration • Health education and health promotion • Care plans for students with serious health problems • School/community health care provider liaison • Maintenance and review of school health records in coordination with designated school staff • Counseling and guidance on health issues 	Health Care District of PBC School District of PBC PBC Health Department	Annual Report HMC	Number of school health room visits in Pre-K, Elementary, Middle, High and Other schools during February FTE week. Number of: <ul style="list-style-type: none"> ▪ Paraprofessional Evaluations and Treatment (4000) ▪ Nursing Assessments and Counseling (5000) ▪ Medical Management (6000)

	<ul style="list-style-type: none"> Health screening follow-up: if problems are found, a letter is sent home or the school nurse calls parent to recommend further evaluation <p>One full-time RN for every standard public school (elementary, middle school, and high school). Two full-time school nurses in some schools with high volume and/or high acuity in health rooms. LPN's will continue to be utilized in certain schools as 2nd nurses. 10 nursing positions available to assist as back up and/or substitute nurses. (Attachment B).</p> <p>A minimum of 2 school district designees per school are assigned to assist in the health room in school nurse's absence, for lunch breaks and high volume periods. They are trained in CPR, First Aid, medication administration, and student observation.</p>	<p>Health Care District of PBC</p> <p>School District of PBC</p>		
<p>Provision of mandated screenings - vision, hearing, scoliosis, growth and development with BMI calculations and any indicated referral follow-up</p>	<p>Vision and hearing screenings will be provided in grades K, 1, 3, 6 & 9. Scoliosis screening will be provided in grade 6. Growth and development screenings will be provided in grades 1, 3, and 6. A group of 5th graders from the original nutritional education program will also be screened in School Year 2006-2007 and again as 6th graders in School Year 2007-2008.</p>	<p>Health Care District of PBC School District of PBC PBC Health Department</p>	<p>HMC</p>	<p>Number of screenings, failures and outcomes for: Height and Weight (0520) Hearing (0515) Scoliosis (0561) Vision (0510) BMI Assessments (0521, 0522, 0523, 0524)</p>

<p>A system to track referrals or failed screenings with accurate coding and charting of outcomes</p>	<p>School nurses will case manage all students who fail screenings. Outcomes will be coded, charted, and managed according to state standards.</p>	<p>Health Care District of PBC</p>	<p>HMC</p>	<p>A minimum of 75% completion of vision and hearing referrals</p>
<p>Linkages with community partners to assure referral resources for failed screenings and suspected or confirmed health problems</p>	<p>Utilize services of local supporting community OD's and MD's with selected cases. Hearing failures are referred to school district audiologists.</p>	<p>Health Care District of PBC</p>	<p>QI Review</p>	<p>Working list of referral resources</p>
<p>Coordination with VisionQuest (VQ) and the schools for obtaining and documenting information regarding referral completions for children eligible for eye exams and glasses</p>	<p>A contract will continue this school year with Jeppeson Vision Quest. Palm Beach County utilizes local supporting community OD's for examinations. Jeppeson Vision Quest provides glasses for students who meet certain financial criteria.</p>	<p>Health Care District of PBC</p>	<p>HMC</p>	<p>Number of referrals to VQ and students who received glasses or treatment</p>
<p>Refer students with weight-related health issues – and whose BMI is also at or above the 95th percentile or below the 5th percentile.</p>	<p>School nurses will refer students with weight related health issues. Guidelines for referrals and letters to parents will be reviewed again this year for possible revision.</p>	<p>Health Care District of PBC PBC Health Department</p>	<p>HMC</p>	<p>Number of completed referral outcomes (0522, 0524)</p>
<p>Participate in the planning and/or implementation of community-based interventions to reduce the percentage of students at or above the 95th percentile</p> <p>Participate in the planning and/or implementation of school-wide programs to promote improved nutrition and physical activity in coordination with school district wellness policies in accordance with USDA Free and Reduced Lunch requirements (Child Nutrition and WIC Reauthorization Act of 2004)</p>	<p>Will explore partnership with local nursing programs' nursing students as part of clinical rotations to assist with community based interventions. Continue support of local Schools of Wellness initiatives in 25 elementary schools.</p> <p>Participation in the School District Wellness Promotion Taskforce initiatives involving healthy nutrition education and increased physical activities.</p>	<p>Health Care District of PBC</p> <p>Health Care District of PBC School District of PBC PBC Health Department</p>	<p>QI Review</p>	<p>Records/documents from planning and implementation of school and community-based wellness activities</p>

Part I-C. To provide referral and follow-up of suspected or confirmed health problems, consultations with students, parents, staff, and physicians regarding student health concerns, and investigation of public health communicable disease emergencies (s. 381.0056, F.S., Chapter 64F-6, F.A.C., s. 1006.061, F.S., s. 381.001, F.S.). All employees have an affirmative duty to report all actual or suspected cases of child abuse, abandonment or neglect. (s. 1006.061, F.S.)

Quality Improvement (QI) Standards	Strategies	Responsible Person(s)/ Agency	Information Source	Performance Measure
<p>Consultations with Parents: Inform students, parents, and staff of the availability of health counseling and/or consultations</p>	<p>School nurses will interact with families of students with identified medical conditions, form plans of nursing/emergency care, and provide appropriate, student-specific staff education. Children’s Behavioral Health Initiative is a countywide effort to provide a behavioral health component in 43 schools grades K-3. Strategies include classroom teachers administering survey tool; behavioral professionals assist with the interventions and referrals. <u>(Attachment C)</u>. ARNPs provide consultations at 3 Wellness Centers (Westgate Community Wellness Center, Delray Full Service Center and Glade View Elementary School) operated by Florida Atlantic University (FAU). FAU plans to increase the physical size of the Westgate Community Wellness Center and open another center in the Boynton Beach area.</p>	<p>Health Care District , PBC</p> <p>Health Care District of PBC Children’s Services Council Quantum Foundation\School District of PBC and participating partners</p> <p>Florida Atlantic University</p>	<p>HMC</p>	<p>The number of face to face or phone consultations with parents, school staff or physicians regarding suspected or confirmed health problems (5051)</p>
<p>Documentation of health counseling and/or consultations in the appropriate student health treatment record</p>	<p>School nurses will maintain confidential electronic and paper medical record for each student requiring health services.</p>	<p>Health Care District of PBC</p>	<p>QI Review</p>	<p>Documentation of consultations in individual student health records</p>
<p>Communicable Disease Control: Interagency Coordination during suspected or confirmed communicable disease outbreaks in schools. This should include:</p> <ul style="list-style-type: none"> Prevention Strategies 	<p>School nurses will follow Health Department protocol for identification and reporting of reportable-communicable conditions, including syndromic surveillance. <u>(Attachments D-1 & D-2)</u></p>	<p>Health Care District of PBC PBC Health Department School District , PBC</p>	<p>QI Review</p>	<p>Interagency Agreements between Health Departments, School Districts and schools</p>

<ul style="list-style-type: none"> • Process to identify and report communicable disease to CHD • Initial Response & Notification • Outbreak Investigation • Medical Intervention 				
<p>Abuse Reporting: Mandatory reporting by all school and school health staff of suspected child abuse or neglect of students</p>	<p>School nurses and school staff adhere to state statutes relative to suspected child abuse or neglect.</p>	<p>Health Care District , PBC School District, PBC Health Department, PBC</p>	<p>QI Review</p>	<p>Documentation that all staff have received training on reporting procedures</p>

Part I-D. To provide a dental disease prevention program in the school setting (s. 381.0056, F.S., and Chapter 64F-6.001-.006, F.A.C.).				
Quality Improvement (QI) Standards	Strategies	Responsible Person(s)/ Agency	Information Source	Performance Measure
Preventive dental services such as dental health education, dental screening, sealants or supplemental fluoride rinse	Elementary schools will be selected from areas that have a non-fluoridated water supply to participate in a Fluoride Mouth rinse program in grades K-5. Contact elementary schools with teacher assistant and/or volunteers. Continue school-based screening and dental sealant program in 21 low income schools with parental permission. <u>(Attachment E)</u> Provide dental education or technical assistance to interested teachers as time permits.	School Dental Services Specialist, PBC Health Department (Division of Public Health Dentistry)	HMC	Number of dental health classes (8020)
			HMC	Number of preventive dental health services provided (6610)
			HMC	Number of dental screenings provided (0540)
Linkages with dentists who provide services to Medicaid eligible students or who volunteer their services for students without health/dental insurance	A list of Medicaid providers is available from Area 9 Medicaid Office, WPB. Students without health/dental insurance are referred to Project Dentist Care volunteer sites such as the Caridad Clinic.	School Nurses, PBC Health Department	QI Review	List of participating dental providers
Collaboration between the CHD dental health program and community dental providers where available	Collaborate with Dental Societies in conducting activities during National Children's Dental Health Month and in development of community-based dental disease prevention program.	Dental Director and School Dental Services Specialist, PBC Health Department.	QI Review	Documented agreements between CHD and dental providers

Part I-E. To have an operational plan for the management of emergency health needs in each school (s. 381.0056, F.S., and Chapter 64F-6.004, F.A.C.).				
Quality Improvement (QI) Standards	Strategies	Responsible Person(s)/ Agency	Information Source	Performance Measure
Policy and procedures for the management of emergency health situations in schools	School nurses will identify and implement individual students' emergency care plans. Each school has a Crisis Response Plan.	Health Care District , PBC School District, PBC	QI Review	Copies of policies and procedures available in school health rooms
First aid and CPR certification of school health room staff and two additional school staff persons	School nurses will maintain current CPR and Basic Trauma Life Support certification and First Aid training. Each school will provide at least 2 staff personnel who also maintain CPR and First Aid training.	Health Care District of PBC School District of PBC	Annual Report	Number of individuals certified in first aid and CPR in each school
Names and contact information for certified staff posted throughout the school campus	School principals will ensure sufficient staff members are trained and their names are posted on emergency response cards.	School District, PBC	QI Review	List of certified staff strategically posted for easy access
Current student emergency health and contact information available for all students	Updated student emergency health and contact information is requested by school staff each year and as changes occur.	School District, PBC	QI Review	Student emergency cards/forms are on file or electronically available
Procedures to ensure adequate health and first aid supplies and emergency equipment are available in all schools	School nurses' health room supplies are ordered by Health Care District of PBC and funded in part by School District at rate of \$.50 per student. School District supplies and maintains an Automatic External Defibrillator for each school site.	Health Care District , PBC School District, PBC	QI Review	Inventory/checklist available
Ongoing monitoring of accident/injury reports and active planning to limit/prevent re-occurrence. Collaborate with, or participate in risk management, crisis response teams, and safety committees	School nurses document treatment on all students' injuries. All school nurses participate in school safety committees and collaborate with crisis response teams as needed.	Health Care District , PBC School District, PBC	Annual Report Annual Report QI Review	Total number of unintentional, and intentional injuries (injuries related to fights and violence) treated Number of calls to 911 Number of school health services staff who serve on school safety committees

Part I-F. Public health personnel shall assist school personnel in health education curriculum development (s. 381.0056(m), F.S.), and the district school board shall coordinate the educational aspects of Comprehensive Health Education (s. 1003.42(m), F.S.), and Health Education; instruction in acquired immune deficiency syndrome (s. 1003.46, F.S.) with the school health services program. The school board shall provide in-service health training for school personnel (s. 381.0056(7)(b), F.S., and Chapter 64F-6.001-.006, F.A.C.).

Quality Improvement (QI) Standards	Strategies	Responsible Person(s)/ Agency	Information Source	Performance Measure
Collaboration between schools, school health coordinators and other health staff in development of health education curriculum	School nurses provide classroom programs in coordination with School District PBC curriculum. Approximately 30 elementary schools have nurse nutrition education program designed for first grade by Health Department nutritionists. School nurse track health education activities. Teen Pregnancy Parenting committee and SHAC both supporting SD updating Human Sexuality curriculum. SY 2005-06 implemented revised 7 th grade curriculum in science classes; plan to revise 6 th grade curriculum similarly in SY 2006-07; included pilot revisions for grades 4 and 5.	Health Care District, PBC School District, PBC	QI Review	Number of health education programs provided by school health staff and number of participants (8020)
School board provision of in-service health training to school personnel	School District Department of Employee Benefits and Risk Management provides training and education to school staff.	School District of PBC	QI Review	Records of school staff health training events

Part I-G. To initiate and maintain a cumulative health record on each student to document identified health problems and corrective measures taken (s. 381.0056, F.S., and Chapter 64F-6.001-.006, F.A.C.). To ensure individually retrievable student health treatment records created by health care professionals and containing protected health information and health services are maintained and released in accordance with state and federal law (s. 381.0056(5)(p), F.S.; s. 1002.22, F.S.; Family Educational Rights and Privacy Act (FERPA), 20 U.S.C. § 1232g; 34 CFR Part 99; Health Insurance Portability and Accountability Act (HIPAA), Public Law 104-191; and Chapter 64F-6.005, F.A.C.).

Quality Improvement (QI) Standards	Strategies	Responsible Person(s)/ Agency	Information Source	Performance Measure
<p><i>Cumulative Health Record</i> (DH Form 3041) for all students which contain:</p> <ul style="list-style-type: none"> School Entry Health Examination (DH 3040) Florida Certificate of Immunization (DH 680) or Religious Exemption from Immunization (DH 681) <p>Documentation of health history and information including:</p> <ul style="list-style-type: none"> Allergies Health conditions (except super confidential information) Screening tests, results, follow-up, and referral outcomes Student health care plan for day-to-day or emergency care of chronic or acute health conditions Notation of the existence of student treatment records which may include confidential protected health information (PHI), such as child abuse, HIV, STDs, mental health counseling. 	<p>Each school maintains individual cumulative health records. Confidential PHI will be maintained by school nurse and notice of existence of record will be placed in DH 3041.</p> <p>School nurses will review new DH 3040s and collaborate with school data processors to facilitate immunization compliance.</p> <p>School nurses will provide case management for appropriate health conditions and screening failures.</p>	<p>School District of PBC Health Care District of PBC Health Department, PBC</p> <p>School District of PBC Health Care District of PBC PBC Health Department</p> <p>Health Care District, PBC PBC Health Department</p>	<p>QI Review</p> <p>QI Review</p> <p>Annual Report</p>	<p>Existence of <i>Cumulative Health Record</i> for each student</p> <p>Documentation on <i>Cumulative Health Record</i></p> <p>Number of chronic health conditions by type of disorder</p>
<p>Care plan for day-to-day or emergency care of students with chronic or acute health conditions available to staff and caregivers that have ongoing contact with student</p>	<p>School nurses will consult with families to create and will maintain daily and/or emergency care plans and will provide appropriate, student-specific school staff education.</p>	<p>School District of PBC Health Care District of PBC Health Department, PBC</p>	<p>HMC</p> <p>QI Review</p>	<p>Number of care plans developed (5053)</p>

<p>Confidential Student Treatment Records for PHI including:</p> <ul style="list-style-type: none"> • Background information for care planning and copy of care plan • Authorizations to treat, release or obtain PHI • Mental health, child or substance abuse, HIV or AIDS • Nursing progress notes, assessments, medical diagnosis and individual treatment logs • Medicaid billing information • Other PHI 	<p>School nurse supervisors monitor school health records maintenance including documentation standards and confidentiality to assure compliance with Florida law.</p>	<p>Health Care District of PBC Health Department < PBC</p>	<p>QI Review</p>	<p>Policy and procedures for confidentially maintained Student Treatment Record</p>
<p><i>Cumulative Health Records</i> and/or the local district computer system updated yearly with current health information obtained from student emergency cards/forms and other sources</p>	<p>Local School District computer system captures current health information obtained from registration forms and is updated daily.</p>	<p>School District of PBC</p>	<p>QI Review</p>	<p>Current records and electronic files</p>
<p>Maintenance of a daily clinic log to track student health services data</p>	<p>Health services will be documented electronically by HCD school nurses. In nurses' absence, data from school personnel hand-written logs will be submitted by HCD school nurses to HCD for compilation.</p>	<p>School District of PBC Health Care District of PBC PBC Health Department</p>	<p>Annual Report</p>	<p>Student utilization of health services data from the <i>Daily Health Services Log (CSHSP only)</i></p>

Part I-H. To provide health related information on students seeking placement or re-evaluation of placement in exceptional student programs (s. 381.0056, F.S., and Chapter 64F-6.001-.006, F.A.C.). To ensure invasive medical services are provided by appropriately trained individuals (s. 1006.062, F.S.). To assure student safety and quality care by adherence to nursing standards of care (Nurse Practice Act, ss. 464.001-.027, F.S.).

Quality Improvement (QI) Standards	Strategies	Responsible Person(s)/ Agency	Information Source	Performance Measure
Collaboration between Exceptional Student Education (ESE) staff and school health services staff to assess the health conditions and services required by ESE students, and to provide health related information for ESE staffing	Procedures and protocols are developed in accordance with the Florida Nurse Practice Act for assessing health needs, providing training, supervision, monitoring, documentation and sharing of information. School nurse is included in ESE staffings.	School District of PBC School Health Program School nurse and ESE contact at each school	HMC	Number of ESE staffing attended by school health staff (5052)
Child-specific training by registered nurses for health services delegated to unlicensed assistive personnel (UAP)	Nurses hired by School District train licensed and non-licensed/non-medical assistive personnel.	School District of PBC	QI Review	Documentation of all child-specific trainings (for each care procedure) given to each UAP
Invasive procedures provided by appropriately trained personnel and monitored by a registered nurse	School District contracts with local nursing agency to provide and monitor services.	School District of PBC	HMC QI Review	Number and type of complex medical procedures provided to ESE students by school health staff (HMC 5032) Invasive procedures documented on individual student health treatment records

Part I- I. To provide nonpublic schools with information regarding school health services (s. 381.0056, F.S., and Chapter 64F-6.001-.006, F.A.C.).				
Quality Improvement (QI) Standards	Strategies	Responsible Person(s)/ Agency	Information Source	Performance Measure
Inform nonpublic schools about the availability of school health services, and their responsibilities if they voluntarily choose to participate in the school health services program	<p>Letters are sent to all private schools at least annually to inquire about the following:</p> <ul style="list-style-type: none"> • Immunization status • Provide information regarding school entry health requirements, policy changes and scheduled continuing education programs <p>Private school nurses invited to attend school nurse education days for CEU's.</p> <p>Vision and hearing train the trainer sessions as requested.</p> <p>Private school health designees are provided with basic information sessions as requested. Health department staff serves as a resource for school health policies and provides consultation services.</p>	PBC Health Department	Annual Report	Number of nonpublic schools who choose to participate in school health services program
		Health Care District of PBC	Annual Report	Types of services requested and provided in nonpublic schools
		Health Care District of PBC		
		PBC Health Department		

Part I-J. The district school board shall make available adequate physical facilities for health services (s. 381.0056, F.S., and Educational facilities, Chapter 6-2.001, F.A.C.).

Quality Improvement (QI) Standards	Strategies	Responsible Person(s)/ Agency	Information Source	Performance Measure
<p>All schools will have adequate, designated space available to provide school health services in a confidential setting</p>	<p>Collaborative partners have developed a prototype for elementary, middle and high school health rooms for provision of health services in a confidential setting.</p> <p>School nurses and school principals will participate in an annual facilities survey to make partners aware of changes in existing facilities.</p>	<p>The Division of Facilities Management at the School District of PBC, Health Care District of PBC PBC Health Department</p> <p>School District of PBC Health Care District of PBC</p>	<p>Annual Report</p> <p>QI Review</p>	<p>Number of schools that have health room facilities (as described in HRSM 150-25 pp. 2-3, standard 6);</p> <p>Health rooms/clinics compliant with the Department of Education State Requirements for Educational Facilities, December 1999; Chapter 3, Section 3.2(d) Clinic; Chapter 5, Section 5(h) Clinics (School), and 5(i) Clinics (Full Service School Program)</p>
<p>Participation of CHD and LSD school health staff in planning and improving existing and new school health services facilities</p>	<p>A plan is in place that requires Health Department and Health Care District review and approve all new construction and renovation of existing health rooms.</p>	<p>Health Care District of PBC School District of PBC, PBC Health Department</p>	<p>QI Review</p>	<p>Facilities meet required standards for health, sanitation, safety and confidentiality</p>

Part I-K. To have a procedure for assisting students in the administration of medication during school hours and for licensed professionals to train school personnel in administering medication (s. 1006.062, F.S., and s. 1002.203)(i), F.S, (Kelsey Ryan Act)).

Quality Improvement (QI) Standards	Strategies	Responsible Person(s)/ Agency	Information Source	Performance Measure
Current school district medication policy for assisting students in the administration of prescribed and over-the-counter medication	School District policy updated 9/06 to reflect current Florida statutes.	School District of PBC	QI Review Annual Report HMC	Copy of medication policy available in every school Number of medication doses administered in pre-k, elementary, middle, high, and other schools during February FTE week (5030)
Curriculum and documentation of training, by a registered nurse, of the school personnel designated by the principal to provide students with assistance in medication administration	School nurses will provide training and maintain documentation of medication administration training to school personnel.	School District of PBC Health Care District of PBC PBC Health Department	QI Review	Current curriculum and yearly training records available
Individual medication records for each student taking medication at school	School nurses will maintain electronic and manual medication administration records for each student taking medications at school.	Health Care District , PBC	QI Review	Individual medication records
Documentation of medications received, counted and stored in accordance with s. 1006.062, F.S.	School nurses and trained health room designees will accept, count, store and document all received medications.	School District of PBC Health Care District of PBC	QI Review	Documentation on student medication form

Part I-L. To ensure that students who attend any public or nonpublic school have proper documentation of Certification of Immunization or Certificate of Immunization Exemption (s. 1003.22, F.S., and Rule 64D-3.011, F.A.C.). To ensure that all students entering Florida schools for the first time, including Pre-K, have a health examination within the past twelve months (s. 1003.22, F.S., and Rule 6A-6.024, F.A.C.).

Quality Improvement (QI) Standards	Strategies	Responsible Person(s)/ Agency	Information Source	Performance Measure
Collaborative efforts to assure that annual Immunization requirements for all grades are met	<p>Immunization status is verified for 100% of students by either data processor or school nurse.</p> <p>School site visits by immunization team to review records and provide education and guidance for school staff, and compare hard copy of DH 680 with-school district TS 1124 printout.</p> <p>School nurse/data processor trainings conducted twice annually.</p> <p>Agreement with school district to provide immunization outreaches at various school sites throughout the year.</p> <p>Monthly immunization calendar of immunization van services available at each school site.</p>	School District of PBC PBC Health Department	QI Review	Immunization status is verified for 100% of the students
All immunization information transferred electronically is accompanied by a hard copy of a <i>Florida Certificate of Immunization</i> (DH 680) when the student's <i>Cumulative Health Record</i> is transferred from the previous school	Student records will be transferred to the receiving school according to School Board Policy D-5.05.	School District of PBC	HMC QI Review	<p>Number of new enrollee record reviews (0598)*</p> <p>Number of students requiring immunization follow-up services by school health staff (5033)</p> <p>All student Cumulative Health Records will contain a Florida Certificate of Immunization (DH 680) or Certificate of Exemption (DH 681)</p>
A collaborative plan with the school district to ensure the availability of school entry health examinations for school age children	School nurses and School District PBC staff will promote Kid Care and Florida Healthy Kids for families without insurance. Identified families with children on free and reduced lunch will be targeted for direct mailings.	Health Care District of PBC School District of PBC PBC Health Department	QI Review	All student <i>Cumulative Health Records</i> will contain a <i>School Entry Health Exam</i> (DH 304 form or equivalent)

2006- School Health Services Plan

County: Palm Beach

<p>School health staff reviews the health examinations for pre-existing medical problems which might require special attention/care plans</p>	<p>School nurses review each new health examination for health problems or pre-existing medical conditions requiring nursing care plans and case management.</p>	<p>Health Care District of PBC PBC Health Department</p>	<p>HMC Annual Report</p>	<p>Number of new enrollee record reviews (0598) Number of chronic health conditions Number of care plans developed (5053)</p>
---	--	--	------------------------------	---

PART II: SCHOOL HEALTH SERVICES PLAN FOR COMPREHENSIVE SCHOOL HEALTH SERVICES (CSHSP) FOR 2006 - 2008				
<i>Part II-A. To promote student health (s. 381.0057, F.S.)</i>				
Objective 1: CSHSP staff will provide supplemental health services to students, in addition to basic services, which will enable 90% of students receiving health services to return to class.				
Quality Improvement (QI) Standards	Strategies	Responsible Person(s)/ Agency	Information Source	Performance Measure
Provision of health room services and health assessments to identify student health problems, and refer as needed	One full time school nurse and one full time health support specialist assigned to each comprehensive school to provide health assessments, nursing interventions, immunization compliance review and case management and follow-up. Coordination of health services with parent, school staff, community physicians and agencies.	PBC Health Department, school health staff	Annual Report HMC HMC	Daily Health Services Log Summary (DHSLS) Services data Tracking tool for referrals of identified health problems
Objective 2: Reduce the prevalence of overweight students to 12% or less by 2010 (Healthy People 2010).				
Quality Improvement (QI) Standards	Strategies	Responsible Person(s)/ Agency	Information Source	Performance Measure
Provision of health promotion activities on nutrition and physical activity	Growth and development screening with BMI calculation on 6 th and 9 th grades students to identify those overweight. Individual counseling and group education on the benefits of healthy eating and daily physical activity. Consult with parents to assist them in healthy food choices for their children and the importance of physical activity for all. Enlist assistance of PE teachers and coaches and cafeteria managers.	PBC Health Department, school health staff	Annual Report HMC	Number of school and community health promotion activities (GHSLs) (7500, 8020, 9041)
Objective 3: During each school year CSHSP staff will provide or coordinate educational activities that promote healthy living in each project school.				
Quality Improvement (QI) Standards	Strategies	Responsible Person(s)/ Agency	Information Source	Performance Measure
Provide classes and interventions in the following topics: Dental health General health/other	From satisfaction surveys conducted in spring, school staff requesting in-service on weight management, asthma management, diabetes	PBC Health Department, School Health staff	HMC Annual Report	Number of classes, interventions, and participants in the listed topics (GHSLs) (6030 and 8020)

<p>Injury prevention/safety Mental health/self-esteem Nutrition Physical activity Human sexuality Staff wellness Staff in-service Parenting skills</p>	<p>management; will be scheduled. Also classroom sessions on general health and hygiene and risky behaviors. Arrange with community agencies for conflict resolution, tobacco, alcohol and drug abuse. Mammograms for staff Hope van (local hospital sponsored). Arrangements with American Lung Association for lung mobile visit. Case management of female students presenting to health room with pregnancy related concerns. Newsletter articles on healthy eating and physical activity. Work with cafeteria manager and PE teachers and coaches. Plan for participation in health fairs before start of SY 2007/08.</p>			
---	--	--	--	--

Part II-B. Decrease student involvement in alcohol/tobacco/drug abuse, suicide/homicide, and other forms of risk-taking behaviors (s. 381.0057, F.S.).

Objective 1: During each school year, CSHSP staff will provide or coordinate counseling and referrals to decrease substance abuse (alcohol, tobacco and other drugs).

Quality Improvement (QI) Standards	Strategies	Responsible Person(s)/ Agency	Information Source	Performance Measure
Provide or refer for counseling to decrease substance abuse	Arrange with community agencies to provide counseling for identified students. Identify community resources via "Where To Turn".	PBC Health Department, school health staff	Annual Report	Number of referrals to alcohol, drug abuse, and tobacco treatment/ cessation programs (DHSLs)
Identification of counseling and referral resources	Current "Where to Turn"; a comprehensive listing of all community agencies.	PBC Health Department, school health staff	QI Review	List of referral resources
Track referrals to assure that students have received treatment for identified substance abuse problems	Nursing case management of identified students participating in substance abuse activities.	PBC Health Department, school health staff	QI Review HMC	Plan for a case management process for referred students (9010)

Objective 2: During each school year, CSHSP staff will provide or coordinate educational classes and interventions to reduce high-risk behaviors

Quality Improvement (QI) Standards	Strategies	Responsible Person(s)/ Agency	Information Source	Performance Measure
Provide classes and interventions in the following topics: Violence prevention/conflict resolution Date rape Child abuse Alcohol, tobacco, and other drug abuse prevention Suicide prevention HIV/STD Pregnancy prevention	Arrange for speakers from outside community agencies. Utilize school police to provide class on violence and conflict resolution, date rape. Creole speaking nurse will provide education to parents in native language on teen pregnancy and school attendance. Nursing case management of female students presenting to health room with pregnancy related issues.	PBC Health Department, school health staff	HMC Annual Report	Number of classes, interventions, and participants (6030 and 8020) (GHSLs)

Objective 3: The incidence of suicide among adolescents in grades 6 to 12 will be less than 6 per 100,000 by 2010 (Healthy People 2010)				
Quality Improvement (QI) Standards	Strategies	Responsible Person(s)/ Agency	Information Source	Performance Measure
a) Protocols for responding to suicides and suicide attempts	School district protocol in place at each school. Educational programs on suicide prevention.	PBC Health Department, school health staff School District, PBC	Annual Report	Annual number of known suicides by students in grades 6 to 12 in CSHSP schools
b) Suicide prevention interventions and classes	Coordinate with outside community agencies to provide education to students. School District's School Based Teams with school nurse involvement.	Health Department, school health staff School District of PBC	Annual Report	Number of suicide prevention interventions and classes (GHSLs 6030 and 8020)
c) Identification of counseling and referral resources	Utilize "Where to Turn", comprehensive listing of all services within the county. Referrals from guidance, school staff, and school health staff will be tracked.	PBC Health Department, school health staff School District of PBC	Annual Report HMC	Annual number of students in CSHSP schools referred for mental health counseling (DHSLs)
d) Methodology for tracking referrals of students with identified suicidal behaviors substance	Nursing case management and/or tickler system for tracking	PBC Health Department, school health staff	QI Review HMC	Case management of referred students (9010)

Part II-C. Reduce incidence of teenage pregnancy (s. 381.0057, F.S.)

Objective 1: The birth rate to female students in CSHSP schools will be less than 10 per 1,000 live births.

Quality Improvement (QI) Standards	Strategies	Responsible Person(s)/ Agency	Information Source	Performance Measure
<p>a) Reduce teenage pregnancy by identifying and intervening with students at risk for early parenthood. Examples of risk factors include:</p> <ul style="list-style-type: none"> • High absenteeism, • Poor academic achievement, • Early sexual activity, • Previous pregnancy, • Child or sibling of a teen parent, • Engagement in other health risk behaviors 	<p>Pilot will occur in 4 identified high risk high schools to have selected guidance counselor work closely with school to identify pregnant students. Teen case managers, healthy start nurses are working closely with school nurses in all schools. Sessions by teen case managers to talk to parents are being arranged at convenient times for parents to attend at a community facility.</p>	<p>PBC Health Department, school health staff School District of PBC</p>	<p>Annual Report</p>	<p>Annual number of female students in CSHSP schools in grades 6-12 Annual number of students in CSHSP schools who gave birth Annual number of babies born to students enrolled in CSHSP schools</p>
<p>b) Counseling and education of teens to prevent and/or reduce involvement in sexual activity</p>	<p>School nurses will do individual counseling and education. Arrange for speakers from community agencies</p>	<p>PBC Health Department, school health staff</p>	<p>Annual Report HMC</p>	<p>Number of pregnancy prevention classes, interventions, and participants (GHSL 6030 and 8020)</p>
<p>c) Interagency collaboration activities to prevent and/or reduce teen pregnancy</p>	<p>Teen Pregnancy Prevention/Parenting Committee with participation from school health partners and community agencies involved with teens and pregnancy.</p>	<p>Health Department, PBC, School Health Division Health Care District of PBC School District of PBC</p>	<p>QI Review</p>	<p>Community-based teen pregnancy prevention activities</p>

Objective 2: The rate of low birth weight (LBW) babies born to female students in CSHSP schools will be less than 5/1000 live births.

Quality Improvement (QI) Standards	Strategies	Responsible Person(s)/ Agency	Information Source	Performance Measure
<p>Procedure to identify the number of LBW babies born to students enrolled in CSHSP schools</p>	<p>Nursing case management and follow-up of identified pregnant teenagers.</p>	<p>Health Department, PBC, school health staff</p>	<p>Annual Report</p>	<p>Number of LBW babies born to students enrolled in CSHSP schools</p>

Comprehensive intervention services to pregnant teens (including Healthy Start Services and Healthy Families)	All identified teens are immediately referred to Healthy Start Services and Healthy Families.	PBC Health Department, school health staff	HMC	Case management of children of parenting adolescents (9010)
---	---	--	-----	---

Objective 3: At least 90% of female students will return to school or enter alternative education after the birth of their child.

Quality Improvement (QI) Standards	Strategies	Responsible Person(s)/ Agency	Information Source	Performance Measure
Tracking return to school or continuing education for pregnant and parenting students	Nursing case management and follow up after birth of baby. Individual sessions with teen to address planning for return to school and beyond.	PBC Health Department, school health staff	Annual Report QI Review	Number of CSHSP students who return to school after giving birth Number of parenting students in project schools
Interagency collaboration (such as Teenage Parent Program (TAPP), Temporary Assistance for Needy Families (TANF), Healthy Start, CHD programs and other community agencies) to identify and address the gaps in services and barriers which might interfere with parenting students returning to or continuing in school	Teen Pregnancy Prevention/Parenting Committee with school health partners and community agencies participating to address barriers to returning to school and gaps in service delivery county -wide.	Health Care District of PBC School District of PBC PBC Health Department	HMC QI Review	Number of counseling and case management services to parenting teens (8040 and 9010) Local collaborative plan

PART III: SCHOOL HEALTH SERVICES PLAN FOR FULL SERVICE SCHOOLS (FSS) FOR 2006- 2008

Part III-A. The Department of Health and the Department of Education shall jointly establish full service schools to serve students from schools that have a student population that has a high risk of needing medical and social services, based on the results of demographic evaluations (s. 402.3026, F.S.). Funds shall be used to provide health services in schools and must be integrated with other school health services.

Quality Improvement (QI) Standards	Strategies	Responsible Person(s)/ Agency	Information Source	Performance Measure
<p>CHD and school district will collaborate to plan and coordinate the FSS program (i.e. Program administration, and coordination of in-kind providers and services to students and families)</p>	<p>Implementation during SY 2006-07 of school based clinic at local high school to be staffed with an ARNP, social worker, staff assistant and medical assistant to provide medical and social work services to students attending that school. School nurse will continue to provide basic school health services.</p>	<p>PBC Health Department</p>	<p>QI Review</p>	<p>Collaborative agreement/contract between the CHD and school district</p>
<p>Provision of specialized services to students and families as an extension of the educational environment. These services may include, but are not limited to:</p> <ul style="list-style-type: none"> • Nutritional services • Basic medical services • Economic services (temporary assistance to needy families – TANF) • Parenting skills • Counseling for abused children • Counseling for children at high risk • Counseling for parents of at-risk children • School health nursing services • Basic adult education 	<p>School based staff at selected high school will provide all of these services or coordinate with local community agencies or providers to assist. Student Advisory and Parent Advisory Boards will be developed. Resource list for referrals will be developed and MOAs will be developed as needed with local health and social service agencies.</p>	<p>PBC Health Department</p>	<p>HMC</p>	<p>Number of services provided by staff hired by CHD or LSD with FSS funds coded by DAU number</p>
<p>In-kind health and social services provided on school grounds donated by local providers:</p> <ul style="list-style-type: none"> • Adult education • Basic medical services • Case management 	<p>As the operational plan for this clinic is further developed during fall 2006, in kind and other social services will be identified and utilized.</p>	<p>PBC Health Department, school based clinic staff</p>	<p>Annual Report QI Review</p>	<p><u>In-Kind Services:</u> Copy of Agreements for in-kind services, where applicable In-kind time donated per agency or provider</p>

<ul style="list-style-type: none"> • Child protective services Community education • Counseling abused children • Counseling high-risk children • Counseling high-risk parents • Delinquency counseling • Dental services Economic services • Healthy Start/Healthy Families • Job placement services • Mental health services Nutritional services Parenting skills training Resource officer School health nursing services Social work services • Substance abuse counseling • TANF programs (job training) • Other 				<p>Estimated value of in-kind services</p> <p>Type of student services provided by each collaborative partner during the contract year</p>
<p>Utilization and monitoring of standard state contract for FSS funds transferred from the CHD to the school district or other agencies</p>	<p>Monitoring is done by contract manager.</p>	<p>PBC Health Department</p>	<p>Annual Report</p> <p>QI Review</p>	<p>Contract and Model Attachment I, if applicable</p> <p>Contract Monitoring Tool</p>

PART IV: PROGRAM QUALITY IMPROVEMENT FOR 2006-2008

Part IV-A. As part of fulfilling its public health mission, DOH shall conduct a primary and preventive health care program, including school health services (s. 381.005, F.S.). The CHD shall have the responsibility, in cooperation with the local school district, to supervise the administration of the school health services program and perform periodic program reviews (s. 381.0056, F.S.). School nursing services shall be conducted in accordance with the Nurse Practice Act (ss. 464.001-.027).

Quality Improvement (QI) Standards	Strategies	Responsible Person(s)/ Agency	Information Source	Performance Measure
<p>Quality Improvement System which includes:</p> <ul style="list-style-type: none"> • Ongoing review of adherence to requirements for program, school site and school health records • Contract management and quality assurance process • Staff orientation/training plan • School health staffing plan which delineates supervision of staff • Mechanism for tracking School Health revenues and expenses • Method to assess the relationship between school health services and student academic outcomes 	<p>Health Care District has quality assurance policy in place. and monitor standards regularly, Health Department supervisor will visit schools regularly to assess adherence to program requirements and attainment of state mandated goals for comprehensive school health services program.</p> <p>Contract monitoring done annually at selected schools, findings shared.</p> <p>Staffing plan in place.</p> <p>Orientation and training plan in place.</p> <p>Monthly invoices and basic school health services report submitted by Health Care District to Health Department.</p>	<p>PBC Health Department Health Care District of PBC</p>	<p>Annual Report</p> <p>QI Review</p>	<p>Local and state school health office on-site review and desk audits to assure that programs meet the intent of the laws authorizing school health services</p> <p>Academic achievement of students with care plans</p>
<p>Mechanism for administering federal funding in accordance with DOH Revenue Services and the federal Center for Medicaid and Medicare Services</p>	<p>All Palm Beach County students are eligible for school health services.</p>	<p>Health Care District of PBC PBC Health Department</p>	<p>FIS</p>	<p>Semi-annual Single Federal Award Certifications</p> <p>Monthly FLAIR reports</p>
<p>Review and analysis of local data trends impacting student health:</p> <ul style="list-style-type: none"> • School Health Services HMC data • Intentional and unintentional injuries • County health status indicators** • Vaccine preventable diseases in school age children • Communicable diseases including TB, STDs, and HIV/AIDS 	<p>EARS and state reports are monitored. HCD staff will participate in selected community high schools' pilot program to prevent teen and repeat teen pregnancies.</p> <p>School nurses will identify and monitor adolescent pregnancies.</p> <p>School nurses will treat and identify all</p>	<p>Health Care District ,PBC PBC Health Department</p>	<p>HMC</p> <p>Annual Report</p> <p>CHARTS</p> <p>Vital Statistics</p>	<p>HMC Performance Reporting for School Health</p> <p>Trend Data from Annual Reports</p>

<ul style="list-style-type: none"> • Teen births and repeat births Teen Suicide 	<p>reported intentional and unintentional injuries in the electronic medical record system Health Department immunization team provides immunization record review in selected schools and grade levels and works closely with school nurse and school district data processor. Those schools identified as having poor compliance rates, have immunization outreaches.</p>			
<p>Use trend analysis results to update principals, superintendent, SHAC and School Board about student health issues and related school health services, and inform the public</p>	<p>Annual reports are distributed; summary presented at SHAC meeting. SY 2006-07 will develop strategies to more effectively distribute and utilize YRBS results.</p>	<p>Health Care District of PBC School District of PBC PBC Health Department</p>	<p>HMC Annual Report CHARTS Vital Statistics</p>	<p>Process to share data with local stakeholders who participate in program analysis and improvement</p>

LIST OF ATTACHMENTS

Attachment A School District Student & Family Handbook

Attachment B HCD Schools Cross Reference List

Attachment C Behavioral Health Brochure

Attachment D-1 Communicable Disease Reporting Guidelines

Attachment D-2 Syndromic Surveillance Form

Attachment E Dental Sealant Program

Attachment F School Health Brochure

Attachment G PBCHD Division School Health Table of Organization

Attachment H HCD School Health Table of Organization

Attachment I HCD Behavioral Health Table of Organization

Attachment J Hospital Partner Contributions

Attachment K List of Boca Raton Community Hospital Schools

SCHOOL HEALTH

Palm Beach County's School Health Program is a partnership with services provided by the Health Care District of Palm Beach County, Boca Raton Community Hospital, the Palm Beach County Health Department, the School District of Palm Beach County, and Florida Atlantic University. The basic health services available under Florida Statute § 381.0056 to public school students include the school nurse program and the health screenings listed.

A parent may exempt his/her child from the health screenings by written request on the new and returning student registration form (P-5.06).

Basic Program for All Students

School Nurse Services:

- Assessment and intervention for injury/illness
- Case management and care plan development for identified health problems
- Health consultations with parents, staff, and physicians
- School/community/health care provider liaison
- Medication administration
- Health education and promotion
- Reviews of health records (physical exams, immunization records and health screening results)

Health Screenings:

- Vision, hearing, growth and development (height and weight), and scoliosis screenings provide valuable information for school health professionals. Parents are notified of results and suggestions for their health care provider follow-up, if necessary.
- It is very important that all students receive these services for early identification and prevention of future health problems, however, parents may choose to have their children not participate in these screenings by informing the school administration in writing.

Special Programs for Targeted Groups in Selected Areas of the County

School Behavioral Health Program:

- This is a prevention-based program for students in Kindergarten - 3rd grade in 48 elementary schools.
- Behavioral health professionals work with school staff, families, students and the school nurses to assure that students receive the necessary assistance to prepare them to succeed in school and their community.

Dental Prevention Initiatives:

- The Fluoride "Swish" Mouthrinse Program for grades K - 5 is available in areas of the county with non-fluoridated water.
- The Dental Sealant Program for 2nd graders is also available in selected areas.

School Based Community Wellness Centers:

- This program is provided by Florida Atlantic University at several school sites with funding from the Quantum Foundation. This program is an effort to improve access to preventative medical care and to link families with a permanent medical provider. Nurse practitioners and social workers provide services and referrals in selected schools after school hours to help working parents access health services.

School Health Records

- The school district will maintain a folder of health information containing the student's record of immunizations, required school health exams and the health screening results for vision, hearing, growth and development and scoliosis.
- When there are health problems that need to be addressed during the school day, or a student sees the school nurse or other school health professional, a separate confidential health treatment record is created and maintained for the student throughout his/her school years.
- This health treatment record is highly confidential and will only be shared on an "as needed" basis with appropriate school personnel.
- In case of emergency, essential health information will be shared with emergency responders.



Health Requirements for School Attendance

Communicable Diseases

Students having or suspected of having a communicable disease or infestation which can be transmitted to others may be excluded from school, based on the decision of the Department of Health, and not allowed to return unless they have been successfully treated and/or present a note from a physician indicating that they are no longer contagious.

Immunizations (F.S. § 103.22i) (P-5.06)

A Certificate of Immunization (DH 680) indicating compliance with the current required schedule of immunizations must be presented prior to enrollment in school absent exemption. Students who are homeless may be eligible for a 30 day exemption.

**Immunization Requirements for Grades Kindergarten through Grade Twelve
2006-2007 School Year**

	K	1	2	3	4	5	6	7	8	9	10	11	12
DTP/DTaP/DT Series	X	X	X	X	X	X	X	X	X	X	X	X	X
OPV/IPV (Polio) Series	X	X	X	X	X	X	X	X	X	X	X	X	X
MMR- 2 doses	X	X	X	X	X	X	X	X	X	X	X	X	X
Hepatitis B	X	X	X	X	X	X	X	X	X	X	X	X	X
xd Booster								X	X	X	X	X	X
Varicella	X	X	X	X	X	X							

Florida Administrative Code § 64D-3.011

A Physical Examination is Required for All Students New to the District and in PreK, Kindergarten and 7th Grade, without an exemption. (P-5.06)

Parent(s)/Guardian Responsibilities

It is the responsibility of the parent(s)/guardian to notify the school of any health condition of their student(s) which may require medication, treatment, or monitoring at school or on school-sponsored trips or activities.

Pursuant to School Board Policy 5.321, it is the responsibility of the parent(s)/guardian to submit a properly executed "Authorization for Medication/Treatment" form (available from physician) to school administration if their student requires medication (including over the counter) or treatment to be given during the school day.

It is the responsibility of the parent(s)/guardian to notify the school administration pursuant to School Board Policy 5.321 that their student requires a health-related monitoring device, including blood glucose monitoring, under Policy 5.3212. All monitoring devices must be properly labeled consistent with Policy 5.321 and Policy 5.3212.

School Health Administrative Telephone Numbers

Health Care District of Palm Beach County, School Health Administration, 561-659-1270, Ext. 5887
 Palm Beach County Health Department, Division of School Health, 561-355-3158 or 561-355-3159
 School District of Palm Beach County, Supplemental Educational Services, 561-434-8822

Operation Baby Safe

A student who becomes a mother of an unwanted newborn infant may leave her child, without giving her name, at a fire station or hospital. If a mother of an unwanted newborn infant leaves her child either at the fire station, hospital or a qualifying emergency medical services station, she cannot be followed by any person or made to answer any questions. To be able to leave the unwanted newborn infant at a fire station or hospital without giving her name, the mother must leave the baby within three (3) days of the baby's birth. *No questions asked* (F.S. §§ 383.50;383.51).

Health Care District School Cross Reference Report

Area 1 a

Attachment B

Supervisor Gail Hartshorne

Cell 561-445-6844

School Name	Principal	Phone #	Fax	School Nurse	Second Nurse	Phone	Fax
E							
Banyan Creek Elementary	William Fay, Jr.	561-638-2151	561-638-2155	Jill Perstein, RN		561-638-2164	561-638-2155
Crosspointe Elementary	Cheryl A. McKeever	738-2900	738-2915	Katherine Melville, RN		738-2913	738-2915
Forest Park Elementary	Sharon Brannon	369-7056	364-7905	Nadine Mullings, RN		374-7216	364-7905
Galaxy Elementary	Guam Sims	369-7090	369-7041	Clair Perry, RN		752-1111	369-7041
Hagen Road Elementary	Richard Hughes	369-7052	364-7946	Karelyn Jones, RN		752-1177	364-7946
Morikami Park Elementary	Elizabeth Kennedy	561-865-3960	561-865-3965	Mary Jane Farinas, RN		561-865-3964	561-266-0965
Orchard View Elementary	Carole Crilley	561-865-3900	561-865-3922	Debra Rucco, RN		561-865-3905	561-279-1793
Pine Grove Elementary	Anthony Anderson	561-243-1554	561-243-1548	Zanieda Wagner, RN		561-330-8910	561-243-1548
Plumosa Elementary	Sandra Byrne	561-243-1562	561-279-1701	Rona Lindner, RN		561-279-1721	561-279-1701
S. D. Spady Elementary	Martha O'Hare	561-454-7800	561-454-7801	Josanne Harris, RN		561-330-8806	561-243-1540
Village Academy Elementary	Tammy Ferguson	561-330-8860	561-330-8865	Janet Garcia, RN		561-330-8870	561-330-8865
M							
Congress Middle	Kathy Harris	374-5600	374-5642	S. Ferguson-Doyley, RN		561-374-5650	561-374-5642
Don Estridge High Tech Middle	Debra Johnson	561-989-7800	561-989-7810	Colleen Morgan, RN	Jill Broadman, RN	561-989-7826	561-241-2058
Odyssey Middle	Bonnie Fox	752-1300	752-1305	Susan Becker, RN	Gloria Bergeron, RN	752-1315	752-1305
H							
West Boca Raton Community Hig	Francis Giblin	672-2001	672-2014	Barbara Olsomer, RN		561-672-2046	561-672-2014
O							
South Tech Comm. High School	James Kidd	369-7000	369-7024	Joy Fargo, RN		752-1125	369-7024

Health Care District School Cross Reference Report

Attachment B

Area 1 a

Supervisor Gail Hartshorne

Cell 561-445-6844

School Name	Principal	Phone #	Fax	School Nurse	Second Nurse	Phone	Fax
			Float Nurse	Kristin L. Greenman, RN			
			Per Diem				

Health Care District School Cross Reference Report

Area 1 b

Attachment B

Supervisor Roberta A. Hammond Cell 561-445-8344

School Name	Principal	Phone #	Fax	School Nurse	Second Nurse	Phone	Fax
E							
Addison Mizner Elementary	Donna Binninger	561-338-1450	561-338-1453	Jeanne Polimeni, RN		561-362-4581	561-338-1453
Boca Raton Elementary	Bradley S. L. Henry	561-338-1454	561-362-4552	Dixie Bartlett, RN		561-416-1608	561-338-1496
Calusa Elementary	William Latson	561-241-2255	561-241-2259	Gloria Saumell, RN		561-241-2263	561-241-2259
Coral Sunset Elementary	Gary Hagermann	561-852-6660	561-852-6664	Denise Felice, RN		561-852-6623	561-852-6664
Del Prado Elementary	Sandra Rhategan	561-338-1490	561-338-1496	Coleen Figliuzzi, RN		561-416-1651	561-338-1496
Hammock Pointe Elementary	Pamela Veiga	561-852-6980	561-852-6983	Suzanne Ziobro, RN		561-883-8330	561-852-6983
J. C. Mitchell Elementary	Linda Nelson	561-750-4900	561-750-4906	Patrice Horn, RN		561-750-4939	561-750-4906
Sandpiper Shores Elementary	Pamela Popaca	561-470-7051	561-470-7055	Carolyn Weingard, RN		561-470-7059	561-470-7055
Sunrise Park Elementary	Renee Elfe	561-558-2400	561-558-2405	Laurie Dietz, RN		561-558-2407	
Verde Elementary	Walter Cornell	561-218-5840	561-218-5835	Kate Higgins, RN		561-218-5844	561-218-5835
Waters Edge Elementary	Patricia Brehm	561-883-8070	561-883-8068	Cheryl Arriaran, RN		561-883-8082	561-883-8068
Whispering Pines Elementary	Donald Messing	561-218-5800	561-218-5805	Jan Alexander, RN		561-218-5803	561-218-5885
M							
Boca Raton Middle	Jack Thompson	561-416-8700	561-416-8777	Debbie Smith, RN		561-416-8725	561-416-8754
Eagles Landing Middle	Ira Margulies	561-470-7000	561-470-7030	Anna Conaway, RN		561-470-7039	561-470-7030
Loggers' Run Middle	Carol Blacharski	561-883-8000	561-883-8027	Gall DeFeo, RN		561-883-8025	561-883-8027
Omni Middle	Mark Stenner	561-989-2800	561-989-2851	Shelli Robbins, RN		561-989-2824	561-989-2851
H							
Boca Raton High	Geoffrey McKee	561-338-1400	561-338-1440	Oramari McCarthy, RN		561-338-1513	561-338-1440
Olympic Heights High	Peter Licata	561-852-6900	561-852-6974	Graham Danvers, RN		561-883-8311	561-883-8362
Spanish River High	Constance Tuman-Rugg	561-241-2200	561-241-2236	Anne Mon, RN		561-241-2207	561-241-2207

Health Care District School Cross Reference Report

Attachment B

Area 1 b

Supervisor Roberta A. Hammond Cell 561-445-8344

School Name	Principal	Phone #	Fax	School Nurse	Second Nurse	Phone	Fax
			Float Nurse	Charles Graham, RN Kathleen Glickman, RN			
			Per Diem	Debra Gray, RN			

Health Care District School Cross Reference Report

Area 2 a

Attachment B

Supervisor Ginger Ellmyer

Cell 632-0514

School Name	Principal	Phone #	Fax	School Nurse	Second Nurse	Phone	Fax
E							
Barton Elementary	Delorisa Brown	540-9100	540-9128	Mindy Ventimiglia, RN		540-9106	540-9128
Citrus Cove Elementary	Judith Asbury	369-7031	364-7920	Linda A. Boyd, RN		374-7255	364-7920
Crystal Lakes Elementary	Diane Curcio-Greaves	364-7900	364-7903	Caroline A. Brown, RN		374-7274	364-7903
Freedom Shores Elementary	Nancy Lucas	804-3115	868-5305	Joyce Tucci, RN		868-5333	868-5305
Hidden Oaks Elementary	Sari Myers	969-5900	969-5951	Nancy V. Noble, RN		969-5900	969-5951
Lantana Elementary	Elaine Persek	533-6376	533-6413	Myriam Desir, RN		493-1856	533-6413
Manatee Elementary	Karen Riddle	649-6827	434-7484	Celia Sanchez, RN		357-7544	434-7484
Polciana Elementary	Peter Slack	369-7094	364-7947	Maureen Sales, RN		374-7211	364-7947
Rolling Green Elementary	Gay Voss	533-6390	533-6419	Kathryn Tynan, RN		493-1823	533-6419
Starlight Cove Elementary	Susan Saint John	357-6100	357-6108	Linda Nickle, RN		357-6153	357-6108
M							
Christa McAuliffe Middle	Reginald Myers	374-6600	374-6636	Joy Fuller, RN	Leslie Flyer, RN	374-6666	374-6636
Lantana Middle	Ann Clark	540-3400	540-3435	(OPEN)		540-3436	540-3435
H							
Boynton Beach High	Kathleen Perry	752-1200	752-1205	Susan Harrington, RN	Doreen Casanave, LPN	752-1230	752-1205
Park Vista Community High	Nora Rosensweig	561-491-8400	493-6854	Susan Lavigne, RN	Francine Prezioso, RN	491-8442	493-6874
SantaLuces High	John Stevens	642-6200	642-6255	Jane Freitag, RN	Leslie Flyer, RN	357-6163	642-6283

Health Care District School Cross Reference Report

Attachment B

Area 2 a

Supervisor Ginger Ellmyer Cell 632-0514

School Name	Principal	Phone #	Fax	School Nurse	Second Nurse	Phone	Fax
O							
Indian Ridge	Sherri Kelty	493-9600	493-9602	Laurie Posses, RN		493-9636	
			Float Nurse	Joy M. Haywood, RN			
			Per Diem				

Health Care District School Cross Reference Report

Area 2 b

Attachment B

Supervisor Tanya Greer

Cell 632-0513

School Name	Principal	Phone #	Fax	School Nurse	Second Nurse	Phone	Fax
E							
Discovery Key Elementary	Stephen Sills	357-5960	357-5965	Linda S. Loiseau, RN		357-5971	357-5965
Equestrian Trails	Sandra Gero	791-9300	791-9322	Tina Collins, RN		791-9365	791-9322
Forest Hill Elementary	Mary Churchill	434-8483	434-8647	Talley MacIntosh, RN		434-8455	434-8647
Greenacres Elementary	Patricia Lucas	434-8197	434-8948	Donna P. Williams, RN		434-8949	434-8948
Highland Elementary	Brian Killeen	533-6394	533-6466	Rhonda Grosskopf, RN		540-9841	533-6466
Liberty Park Elementary	Michael Borowski	642-1035	642-1046	Estelle Oberman, RN		357-1181	642-1046
North Grade Elementary	Debbie Battles	533-6397	533-6453	Paula Jaddaoui, RN		533-6434	533-6453
Palm Springs Elementary	Denise O'Connor	641-1273	642-1020	Andrea Houston, RN		357-1150	642-1020
South Grade Elementary	Michael Riley	493-0830	493-0840	Antonio E. Artero, RN		493-0838	493-0840
South Olive Elementary	Hank Smith	533-6359	533-6418	Carmen Kelly, RN		493-0806	533-6418
M							
L.C. Swain Middle School	Camille Long-Coleman	649-6900	649-6910	Gail Gershman, RN	Paula G. Segall, RN	649-6900	649-6910
Lake Worth Middle	Robert Hatcher	540-5500	540-5559	Erica Gentry, RN		540-5510	540-5559
Okeehoelee Middle	David Samore	434-3200	434-3244	Denice L. Van Etten, RN	Hannah Slachek, LPN	434-3266	434-3244
H							
John I. Leonard High	Terry Costa	641-1200	357-1100	Helene Schilian, RN	Julia Besecker, RN	357-1195	357-1100
Lake Worth High	Ian Saltzman	533-6300	533-6334	Michael Valerga, RN		533-6423	493-0876
Palm Beach Central High School	Burley Mondy, Jr.	304-1000	304-1017	Garcia Thomas, RN	Carlene C. Valentin, RN	304-1004	304-1003

Health Care District School Cross Reference Report

Attachment B

Area 2 b

Supervisor Tanya Greer

Cell 632-0513

School Name	Principal	Phone #	Fax	School Nurse	Second Nurse	Phone	Fax
				Float Nurse			
			Per Diem	Iris Levin, RN			

Health Care District School Cross Reference Report

Area 3 a

Attachment B

Supervisor Monica Rodgers

Cell 632-0710

School Name	Principal	Phone #	Fax	School Nurse	Second Nurse	Phone	Fax
E							
Belvedere Elementary	Andera Peppers	802-2100	802-2105	Joy Morrison, RN		802-2192	802-2105
Berkshire Elementary	Teresa Stoupas	434-8678	434-8762	Fay Midgley, RN		434-8730	434-8726
Meadow Park Elementary	Pamela Arnette	357-2800	357-2828	Kim Goodwin, RN		357-2813	357-2828
Northboro Elementary	Moneek McTier	881-4752	840-3217	Linda Ventry, RN		841-0776	840-3217
Northmore Elementary	Jo Anne Rogers	881-4759	840-3200	Sandy Weaver, RN		882-1988	840-3200
Palm Beach Public	Sharon Stevens	802-2115	802-2120	Barbara Harrison 9-5-06		822-0720	802-2120
Palmetto Elementary	Raul Iribarren	533-6372	533-6459	Ruby Scruggs, RN		493-1838	533-6459
Pleasant City Elementary	Jacqueline Perkins	805-6230	805-6235	Kelly Walker, RN		805-6232	805-6235
Roosevelt Elementary	Glenda Garrett	820-8200	820-8215	Therese Chambers, RN		820-8204	820-8215
U.B. Kinsey/Palmview Elem	Helen Byrd	802-2145	802-2149	Stacey Harter, RN		671-0478	802-2149
West Gate Elementary	Thais Villanueva	640-5081	688-5292	Zulma Rivera, RN		615-4167	688-5292
Westward Elementary	Melvis Pender	802-2130	802-2135	Mary Barnes, RN		802-2141	802-2135
M							
Conniston Middle		802-5400	802-5409	Linda D. Goulet, RN	Lillie Edwards, LPN	802-5443	802-5409
Roosevelt Middle	George Lockhart	822-0200	822-0222	Tracie Burnett, RN		822-0274	650-6614
H							
Forest Hill High	Mayra Stafford	540-2400	540-2440	Theresa Gronborg, RN	Lillie Edwards, LPN	540-2436	540-2440
Float Nurse							
Per Diem							

Health Care District School Cross Reference Report

Area 3 b

Attachment B

Supervisor Deborah Hebert

Cell 632-0502

School Name	Principal	Phone #	Fax	School Nurse	Second Nurse	Phone	Fax
E							
Benoist Farms Elementary	Eric Paul	681-2250	681-2255	Melissa Mosley, RN		681-2263	681-2255
C O Taylor/Kirklane Elementary	Agartha Gragg	641-1263	641-1268	Evelyn Bernardin, RN		649-4889	642-1015
Cholee Lake Elementary	Helen Gleicher	681-2200	681-2205	Tambre Davis, RN		681-2208	681-2205
Coral Reef Elementary	Bobbi Armenti	649-6000	649-6005	Elizabeth Giarratano, RN		649-6011	649-6005
Diamond View Elem	J. A. Starr	304-4200	304-4210	Scott Abramson, RN		304-4212	304-4210
Grassy Waters Elementary	Amy Wilkinson	681-2400	681-2445	Sylvia R. Ramjattan, RN		681-2400	681-2445
Heritage Elementary	Faith Ann Rudick	649-4810	649-4820	Terri L. Geiman, RN		649-4823	649-4820
Indian Pines Elementary	Laura Lougee	641-1295	642-1049	Judy Wright, RN		357-1115	642-1049
Melaleuca Elementary	Deborah Bauer	640-5071	688-5222	Terrie Fraum, RN		688-5208	688-5222
Wynnebrook Elementary	Jeffrey Pegg	640-5086	688-5297	Marie Mitton, RN		615-4134	688-5297
M							
Jeaga Middle School	Joseph DePasquale	242-8000	242-8005	Julie Kowalski, RN		242-8003	242-8005
Palm Springs Middle School	Sandra Jinks	434-3300	434-3303	Kenny Harris, RN	Suzanne LaBelle, LPN	434-3382	434-3384
Tradewinds Middle School	Kathleen Orloff	493-6400	493-6410	Polly G. Trice, RN		493-6411	493-6410
Woodlands Middle	May Gamble	357-0300	357-0307	Chris Guderyon, RN	Barbara Davies, LPN	357-0392	357-0307
H							
A W Dreyfoos School of the Art	Ellen VanArsdale	802-6000	802-6059	Dorothy Sparks, RN		802-6006	802-6065
				Float Nurse			
				Per Diem			

Health Care District School Cross Reference Report

Area 4 a

Attachment B

Supervisor Renee Parry

Cell 561-516-0500

School Name	Principal	Phone #	Fax	School Nurse	Second Nurse	Phone	Fax
E							
Acreage Pines Elementary	Jack Meeds	795-4994	795-4996	Danielle Hardy, RN		753-9458	795-4996
Belle Glade Elementary	Ariel Alejo	561-993-4490	561-993-4491	Ruth Galang, RN		561-993-9426	561-993-4491
Frontier Elementary	David Alfonso	784-4100	784-4105	Audrey Valentine, RN	Leslie Menghi-Parzygnat, RN	784-4106	784-4105
Glade View Elementary	Mary Evans	561-993-4035	561-993-1943	Carolyn Kline, RN		561-993-1907	561-993-4039
Gove Elementary	Anne Turner	561-993-4042	561-993-4045	Helen Murray, RN		561-993-4090	561-993-4075
K E Cunningham/Canal Point Ele	Lavoise Smith	561-924-6460	561-924-6491	Ada Wright, RN		561-924-6450	561-924-6491
Pahokee Elementary	Vivian Green	561-924-6466	561-924-6469	(OPEN)		561-924-8504	561-993-6469
Pierce Hammock Elementary	Jeffrey Eassa	651-0400	651-0410	Debra Stermen, RN		651-0407	333-4307
Pioneer Park Elementary	Peggy Back-Nelson	561-993-4480	561-993-4005	Annette White, RN		561-993-4480	561-993-4005
Rosenwald Elementary	Deborah Johnson	561-993-4058	561-993-4064	(OPEN)		561-993-1957	561-993-4064
M							
Lake Shore Middle	Floyd Henry	561-829-1100	829-1190	Elaine Williams, RN	Erika Alonso, LPN	561-829-1103	561-993-4051
Osceola Creek Middle	Susan Atherley	422-2500	422-2510	Brenda S. Johnson, RN		422-2505	422-2510
H							
Pahokee Middle/Senior High	Marvin Bain	561-924-6400	924-6457	Glenda Govan, RN		561-924-6400	561-924-6417
Seminole Ridge Community HS	Lynne McGee	422-2600	422-2623	Marjorie D. Firpo, RN	Barbara Jo Story, LPN	422-2600	422-2623
O							
Lake Shore Annex	Derrick Hibler	561-993-4000	561-993-4021	(OPEN)		561-993-4000	561-993-4021
			Float Nurse	Kathy Greenberg, RN			
			Per Diem	Arnetta Kelly, RN			

Health Care District School Cross Reference Report

Area 4 b

Attachment B

Supervisor Diane Carter Cell 632-0528

School Name	Principal	Phone #	Fax	School Nurse	Second Nurse	Phone	Fax
E							
Binks Forest Elementary	Keely Spinelli	792-5250	792-5255	Tina Rahe, RN		792-5241	792-5255
Cypress Trails Elementary	Gale Fulford	795-4950	791-9305	Joyce Grossa, RN	Virginia Davis, RN	792-9575	791-9305
Elbridge Gale Elementary	Gail Pasterczyk	422-9300	422-9310	Jean Laukhuf, RN		422-9300	422-9310
Golden Grove Elementary	Suzanne Gibbs	792-5200	792-5226	Jean Bouchlas, RN		792-5215	792-5226
H. L. Johnson Elementary	Sharon Hench	795-4955	795-4937	Cristin Guimond, RN		795-4990	795-4937
Loxahatchee Groves Elementary	Richard Myerson	795-4961	791-9318	Nancy Laytham, RN	Joyce Thomas, RN	333-4353	791-9318
New Horizons Elementary	Elizabeth Cardozo	795-4966	795-4988	Kara Baker, RN		792-9530	792-4988
Panther Run Elementary	Marilyn Brady	642-6262	642-6265	Stacey Schoenfeld, RN	Tracey Flechaus, RN	357-6162	642-6265
Royal Palm Beach Elementary	Suzanne Watson	784-4140	784-4145	Marybeth J. Stratton, RN		784-4152	784-4145
Wellington Elementary	Pierre D'Aoust	795-4969	795-4974	Cynthia Mecca, RN		753-9477	795-4974
M							
Crestwood Middle	Karen Whetsell	753-5000	753-5035	Maureen McCarthy, RN		753-5030	753-5035
Polo Park Middle	Marcia Andrews	333-5500	333-5505	Judy Marino, RN	Patricia Sweringen, LPN	333-5554	333-5505
Wellington Landings Middle	Mario Crocetti	792-8100	792-8106	Mary L. Romeo, RN	Tracey Flechaus, RN	792-8134	792-8106
Western Pines Middle	Matthew Shoemaker	792-2500	792-2530	Debra Hollihan, RN	Mary Beth Stevenson, LPN	792-2556	792-2530
H							
Royal Palm Beach High	Jose Garcia	753-4000	753-4015	Pat Stormer, RN	Wendy C. Cooper, LPN	753-4010	753-4015
Wellington High	Cheryl Allgood	795-4900	795-4934	Kelley Jackson, RN	Linda Richard, RN	792-9526	795-4934

Health Care District School Cross Reference Report

Attachment B

Area 4 b

Supervisor Diane Carter

Cell 632-0528

School Name	Principal	Phone #	Fax	School Nurse	Second Nurse	Phone	Fax
				Nancy Kramer, RN			
			Float Nurse				
			Per Diem	Sheila Rheault, RN			

Health Care District School Cross Reference Report

Area 5 a

Attachment B

Supervisor Freda Laurent

Cell 632-0535

School Name	Principal	Phone #	Fax	School Nurse	Second Nurse	Phone	Fax
E							
Dr. Mary McLeod Bethune Elem	Glenda Sheffield	494-2600	494-2610	Theresa Hecker, RN		494-2626	494-2610
Egret Lakes Elementary	Rebecca Subin	688-5314	688-5381	Nancy J. Oakes, RN		688-5391	688-5381
Grove Park Elementary	Darlene Nowocien	694-7350	775-7259	Mary R. Koehn, RN		691-0592	775-7259
Lake Park Elementary	Linda Cartlidge	494-1300	494-0005	Sally K. Honeyman, RN		494-1320	494-0005
Lincoln Elementary	Carol Goode	881-4712	840-3227	D. Alexander-Evans 9-5-06		841-0745	840-3227
North Palm Beach Elementary	William Thompson	881-4747	840-3202	Susan Smith, RN		841-0728	840-3202
Seminole Trails Elementary	Judith Garrard	640-5051	688-5223	Diana Palmore, RN		615-4181	688-5223
Washington Elementary	Olivia Butler	881-4665	840-3238	Mary Walker, RN		882-1975	840-3238
West Riviera Elementary	Valerie Reddick-Mason	881-4769	840-3215	Donna Mize, RN		881-3753	840-3215
M							
Bear Lakes Middle	Anthony Lockhart	615-7700	615-7756	Wendy Jacobs, RN		615-7753	615-7789
H. L. Watkins Middle	Ann Wark	776-3600	776-3603	Jean Gilmartin, RN	Janet Legg, RN	776-3654	776-3603
John F. Kennedy Middle	Donald Green	845-4500	845-4537	Desmarie Butler, RN		845-4538	845-4552
Middle School of the Arts	Elizabeth Perlman	882-3870	882-3879	Kelly-Ann Buckley, RN	Barbara M. Breita, RN	882-3883	882-3821
H							
Palm Beach Gardens High	Jonathan Prince	694-7300	691-0515	Maxine Thompson, RN	Janie Edwards, RN	691-0574	694-7397
Palm Beach Lakes High	Nathan Collins	640-5000	688-5340	Vivian Kirkbride, RN	Patrice LaMontagne, RN	688-5231	688-5374
Suncoast High	Gloria Crutchfield	882-3400	882-3443	Linda Rollins, RN		882-3484	882-3443

Health Care District School Cross Reference Report

Attachment B

Area 5 a

Supervisor Freda Laurent

Cell 632-0535

School Name	Principal	Phone #	Fax	School Nurse	Second Nurse	Phone	Fax
			Float Nurse	Sarah Villios, RN			
			Per Diem				

Health Care District School Cross Reference Report

Area 5 b

Attachment B

Supervisor Maureen Agnello Cell 632-0516

School Name	Principal	Phone #	Fax	School Nurse	Second Nurse	Phone	Fax
E							
Alamanda Elementary	Marilyn Garcia	694-7355	775-7232	Penny Helgert, RN		799-4720	775-7232
Beacon Cove Intermediate	Una Hukill	799-7450	799-7455	Karen Dawson, RN	Stephanie Letender RN	799-7454	799-7455
D.D. Eisenhower Elementary	James Pegg	694-7359	775-7238	Marguerite Ulliman, RN		691-0544	775-7238
Jerry Thomas Elementary	Sharon Barwick	744-7990	743-6015	Susan Self, RN		743-6096	743-6015
Jupiter Elementary	Daniel Smith	744-7979	743-6006	Holly Hoover, RN		743-6090	743-6006
Jupiter Farms Elementary	Marilyn Weisgerber	744-7967	744-7972	Laureen Mitchell, RN	June Green, RN	748-5729	744-7972
Lighthouse Elementary	Lori Bonino	745-7261	745-7265	Jackie McIntyre, RN		745-7272	745-7265
Limestone Creek Elementary	Maureen Werner	744-7985	744-7977	Linda Panozzo, RN	Valerie Allen, LPN	748-5752	744-7977
Palm Beach Gardens Elementary	Linda Brown	694-7364	775-7249	Lisa Shamblyn, RN		775-7285	775-7249
Timber Trace Elementary	Sue Slone	799-7400	799-7404	Kathy Edwards, RN		799-7411	799-7404
M							
Independence Middle School	Gwendolyn Johnson	799-7500	799-7505	Rhonda Durand, RN	Vicki Greene, RN	799-7506	799-7505
Jupiter Middle	David Culp	745-7200	745-7246	Kathy McElroy, RN	Laurie Ridgeway, LPN	745-7601	745-7246
Watson B. Duncan Middle	Joseph Lee	776-3500	776-3550	Heidi O'Malley, RN	Cathy Chiat, RN	776-3538	776-3500
H							
Jupiter High	Paula Nessmith	744-7900	744-7978	Mary Ann Cifone, RN	Diane Landry-Hudgens, RN Ruth Swanson, RN	744-7906	744-7978
William T. Dwyer High	E. Wayne Gent	625-7800	625-7870	Patricia A. Crowell, RN	Kathleen Yeckel, RN	691-1053	625-7870

Health Care District School Cross Reference Report

Attachment B

Area 5 b

Supervisor Maureen Agnello

Cell 632-0516

School Name	Principal	Phone #	Fax	School Nurse	Second Nurse	Phone	Fax
			Float Nurse	Barbara Deslauriers, RN			
			Per Diem				

School Behavioral Health Program

The School Behavioral Health Program in Palm Beach County consists of five components:

Preventive Programs and Conditions for Positive Outcomes

- Community involvement
- Family strengthening
- Parenting skills training

Identification and Assessment

- Teacher screening tool for primary grades
- Staff training on behavioral health issues
- More in-depth assessment as needed

Parental & Community Involvement

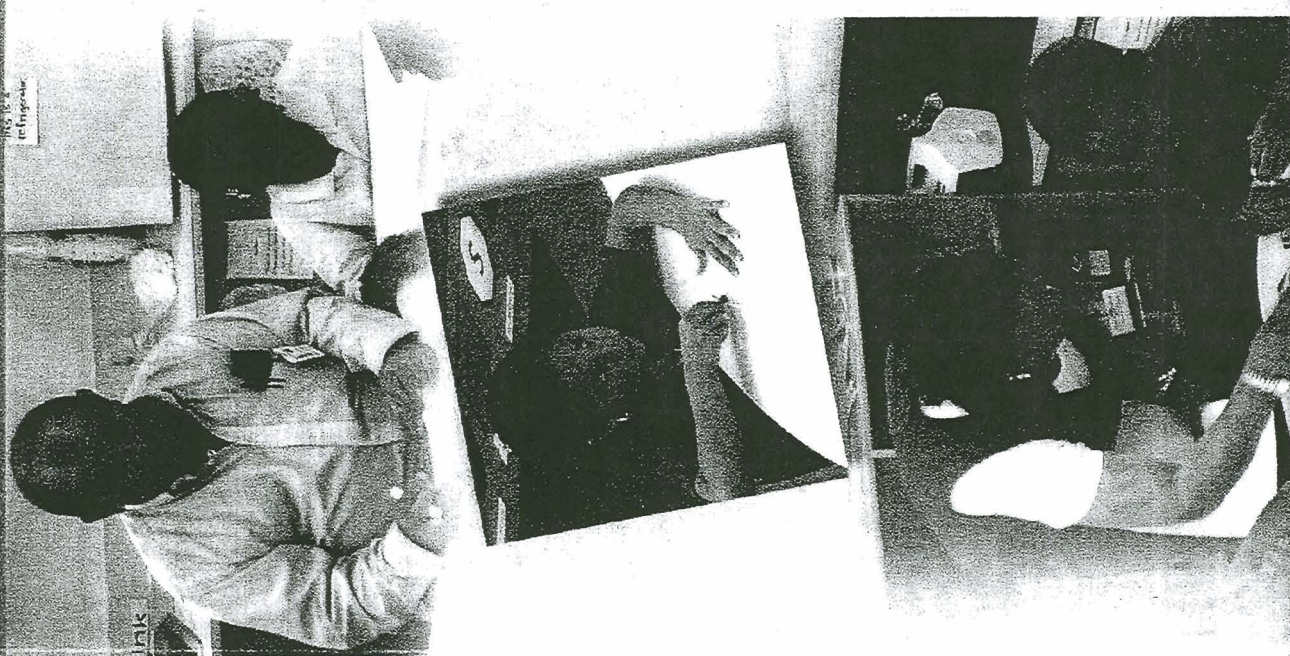
- Outreach to families
- Interfaith collaboration
- After-school program referrals

Early Intervention

- Individualized support
- Links to mentoring services
- School-based counseling
- Referrals to community services
- Classroom interventions
- School staff consultation

Outcome Evaluation

The Chapin Hall Center for Children at the University of Chicago will complete a long-term, research-based evaluation of the program funded by the Quantum Foundation and Children's Services Council.



Feedback

The School Behavioral Health Program was designed to promote positive behavioral health for children and families in Palm Beach County. Here is how the program has touched the lives of so many:

I am happy to report that my son is starting to adjust...He seems to like going to school... he hasn't said, "It's not a good day for school today," in over three weeks and that means the most to me. Homework is getting easier and he seems less stressed at the end of the day... Thanks as always for your care and concern for my son...
From a Parent

Thank you for helping me out yesterday! A lifesaver you are. Your patience, soft voice and sanity were a blessing in my mad rush. So glad to be working with you...
From a Faculty Member

...Our Behavioral Health Professional is an integral member of our school community. Our students and families have benefited from her observations, referrals to community agencies, support at parent conferences and follow-up on behavioral issues. Her astute observations and kind, caring manner support students, parents and staff...
From a Faculty Member

Our Behavioral Health Professional has greatly enhanced our teaching ability by working either in small groups or one-on-one with children who are in need of counseling...
From a Teacher

School Behavioral Health Program in Palm Beach County

The School Behavioral Health Program in Palm Beach County is a prevention-based program in 40 elementary schools in Palm Beach County. The elementary schools include the following:

Allamanda • Barton • Belle Glade
Belvedere • C.O. Taylor/Kirklane
Dr. Mary McLeod Bethune • Egret Lake
Glade View • Golden Grove • Gove
Highland • Indian Pines • J.C. Mitchell
Jupiter • K.E.C./Canal Point • Lake Park
Lantana • Lincoln • Manatee • North Grade
Northboro • Northmore • Pahokee (8/03)
Palm Beach Gardens • Palm Beach Public
Palmetto • Pine Grove • Pioneer Park
Pleasant City • Potnciana • Roosevelt
Rosenwald • Seminole Trails • South Grade
South Olive • Washington • West Gate
West Riviera • Westward • Wynnebrook

The School Behavioral Health Program is a department of the Health Care District of Palm Beach County. The program employs 40 Behavioral Health Professionals who administer early detection and prevention assistance to at-risk students in Kindergarten through 3rd Grade.

The Behavioral Health Professionals work with school staff, families, students, and the school nurses to assure that students receive the necessary assistance to prepare them to succeed in school and their community.

Children's BEHAVIORAL HEALTH *Initiative*

The Children's Behavioral Health Initiative is a collaborative effort by a steering committee of local funders responsible for initiating the School Behavioral Health Program in Palm Beach County. The Initiative began in March 1999 and includes the following members:

CHILDREN'S SERVICES COUNCIL
OF PALM BEACH COUNTY

COMMUNITY FOUNDATION OF
MARTIN AND PALM BEACH COUNTIES

FLORIDA DEPARTMENT OF CHILDREN AND FAMILIES

FLORIDA DEPARTMENT OF JUVENILE JUSTICE

HEALTH CARE DISTRICT OF PALM BEACH COUNTY

JEFFRY AND BARBARA PICOWER FOUNDATION

MACARTHUR FOUNDATION

OFFICE OF THE STATE ATTORNEY

PALM BEACH COUNTY BOARD OF COMMISSIONERS

PALM BEACH COUNTY HEALTH DEPARTMENT

SCHOOL DISTRICT OF PALM BEACH COUNTY

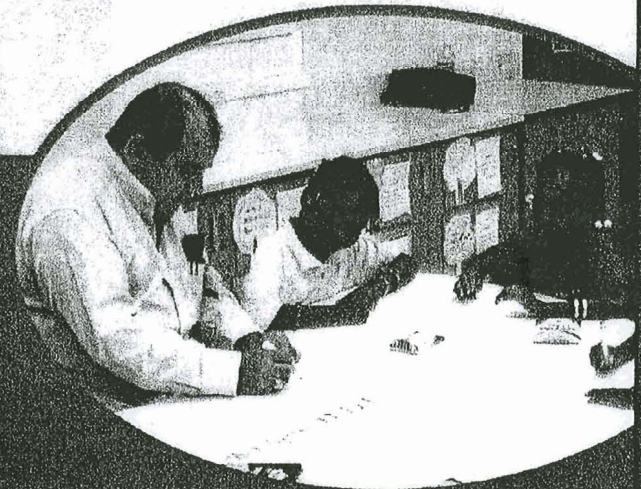
QUANTUM FOUNDATION

UNITED WAY OF PALM BEACH COUNTY

FOR MORE INFORMATION
School Behavioral Health Administration
Tel (561) 659-1270 Ext. 5580
Fax (561) 659-1628
www.hcdpbc.org

10/02

School Behavioral Health Program in Palm Beach County



*Our mission is to promote
the positive social, emotional,
and behavioral well-being of
children and families in
Palm Beach County.*



HEALTH CARE DISTRICT OF PALM BEACH COUNTY

COMMUNICABLE DISEASE REPORTING GUIDELINES FOR SCHOOL NURSES

- PBCHD Division of Epidemiology receives report of positive case of a communicable disease, which could lead to a potential outbreak.
- Division of Epidemiology confirms lab results and notifies: the school nurse, School District health services specialist and School Health Program Medical Director.
- Division of Epidemiology staff consults with:
 - Student's physician, if necessary.
 - School nurse to determine if other students or staff has reported similar symptoms. Depending on disease, teacher may also be contacted to obtain information such as student's friends: sharing of food, utensils; availability of soap in bathroom etc. Epidemiology staff is available for school nurse consultation.
 - School district health services specialist acts as a liaison with school principal and provides necessary demographic or other information to the epidemiology staff.
 - School Health Program Medical Director and Division of Epidemiology Director determine actions to be taken, i.e. letter home, prophylaxis of school contacts etc.

- Division of Epidemiology provides informational letter for parents, if needed, to health services specialist at school district. Letter is put on school letterhead and signed by school principal and Division of Epidemiology director, and copy given to School Health Program Medical Director. Division of Epidemiology's phone number is provided in letter as a contact for parents and school staff.

- Division of Epidemiology staff contacts the parents for case investigation and determination of need for prophylaxis of family and other contacts. Epidemiology staff makes necessary arrangements for contacts to receive prophylaxis.

Syndromic Surveillance Form

Guidelines – This form is to be utilized only for multiple cases of similar symptoms that appear to be unusual. If unsure about whether to submit form, discuss with supervisor first.

Name of School _____ Date _____

School Nurse _____ Phone Number _____

Observations

General symptoms _____

- | | |
|--|--|
| <input type="checkbox"/> Fever of 101° or greater | <input type="checkbox"/> Headache |
| <input type="checkbox"/> Nausea and/or vomiting | <input type="checkbox"/> Congestion of nose and/or ears |
| <input type="checkbox"/> Abdominal pain | <input type="checkbox"/> Cough/wheeze/respiratory distress |
| <input type="checkbox"/> Eye irritation/discharge | <input type="checkbox"/> Throat irritation/soreness |
| <input type="checkbox"/> Severe itching of body or scalp | <input type="checkbox"/> Diarrhea |
| <input type="checkbox"/> Rash/Description _____ | |
| <input type="checkbox"/> Other _____ | |

Date/time unusual symptoms first observed _____

Duration of symptoms _____

Grade level(s) involved _____

Approximate number of students with symptoms _____

Approximate number of staff with symptoms _____

Possible source/cause or related events _____

Number of students/staff hospitalized _____

Additional comments _____

Fax to Epidemiology (PBC Health Department) at 561-845-4496

- When faxing to Epidemiology, please alert the nursing supervisor and school principal.
- Call Epi at 561-840-4568 to assure that fax has been received.
- This will not necessarily generate a full epidemiological investigation, but will assist in monitoring the health status of the community.

**QUANTUM/Palm Beach County Health Department
SCHOOL-BASED
DENTAL SEALANT PROJECT**

BACKGROUND:

The most effective community based dental disease prevention program consists of a fluoride program in conjunction with a dental sealant program. The most desirable and cost-effective sealant program is designed to reach the first and second permanent molars in the second and seventh grade populations. Our aim is to implement the sealant program in selected second grade schools, expanding later to all Title I elementary schools in Pam Beach County.

OBJECTIVES:

1. Seek parental/guardian permission for students to participate in the program.
2. Seek information from parents/guardians regarding student enrollment in Medicaid, Health Care District and other dental insurance programs.
3. Provide dental screening exams for selected second graders for the purpose of collecting epidemiological data and to inform parents/guardians of child's oral health status.
4. Compile aggregate data on current oral health status of second grade children in selected Palm Beach County elementary schools. This data will service as baseline data against which improvement in oral health status can be measured.
5. Refer students who have dentists of record for needed treatment and dental sealant application as indicated.
6. Refer Medicaid and Health Care District enrolled students to participating Medicaid and Health Care District dental offices when they have no dentist of record.
7. Recommend to parents/guardians that they seek dental services through private sector dentists when their children are not eligible for services under Medicaid or Health Care District programs.
8. Provide dental sealants for Medicaid and Health Care District enrolled second graders based upon accepted and specific clinical criteria.
9. Inform parents/guardians about opportunities for dental services under Medicaid and Health Care District programs.

September, 2006



Over the course of a school year, local school health staff provide:

- *Over 600,000 nursing services*
- *Over 200,000 consultations with parents or school staff*
- *Over 2,000 health education classes*
- *Over 12,000 immunization follow-ups to ensure children are protected against preventable diseases*

Over 100,000 vision and hearing screenings

**PALM BEACH COUNTY
SCHOOL HEALTH PROGRAM**

**A COLLABORATIVE
PARTNERSHIP
FUNDED BY:**

**Health Care District
Palm Beach County
School Health Administration
561-639-1270 Ext. 5887**

**School District
Palm Beach County
Department of Student Services/Safe Schools
561-434-8822**

**Palm Beach County
Health Department
Division of School Health
561-355-3158, 3159**

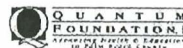
**Florida Atlantic University
Center for Innovation in School
and Community Well-Being
561-297-2670**

Boca Raton Community Hospital

Quantum Foundation

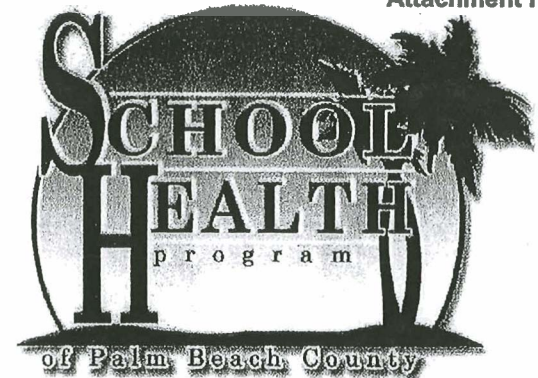
Tenet Healthcare Corporation

Children's Services Council



Revised, May 2004

Attachment F



“Committed to the health and well-being of all students.”

WHAT ARE SCHOOL HEALTH SERVICES?

School health services promote student health through prevention, early intervention, treatment or referral for acute or chronic health problems.



WHO IS ELIGIBLE?

Services are available to all students attending public schools in Palm Beach County.

SCHOOL ATTENDANCE REQUIREMENTS

Physical examinations are required for all students entering Palm Beach County schools for the first time and for students entering the 7th grade. The exam must be within one year prior to school enrollment.

Florida law requires children entering school to be immunized against measles, mumps, rubella, polio, diphtheria, tetanus, pertussis, hepatitis B and other communicable diseases as determined by the Florida Department of Health (DOH). Parents must present the Florida Certificate of Immunization (Form DOH 680) to the school.

Contact your child's doctor or the Palm Beach County Health Department, School Health Division at 561-355-3159 for more information.

BASIC SERVICES

The basic health services available to public school students include the school nurse program and the health screenings listed. A parent may exempt his/her child from these services by written request.

On the school registration form, parents are asked to provide information on their child's health, all phone/ beeper numbers and names of persons to contact if they are unavailable. Parents may also call the school nurse to discuss health concerns.

SCHOOL NURSE SERVICES

- Injury/illness assessment and intervention
- Medication administration
- Health education and health promotion
- Care plans for students with serious health problems
- School/community/health care provider liaison
- Maintenance and review of school health records in coordination with designated school staff
- Counseling and guidance on health issues
- Health screening follow-up: if problems are found, a letter is sent home or the school nurse calls the parent to recommend further evaluation.

HEALTH SCREENINGS

It is very important that all students receive these services for early identification and prevention of future disabilities. Screenings are mandated in Florida in selected grade levels.

- Vision and hearing screening
- Growth and development screening (height and weight)
- Scoliosis (postural) screening

SPECIAL PROGRAMS

Dental Prevention Initiatives Attachment F

- Fluoride "Swish" Mouthrinse Program for K-5 in non-fluoridated areas.
- Dental Sealant Program for 2nd graders in selected areas.

School-Based Community Wellness Centers, Florida Atlantic University

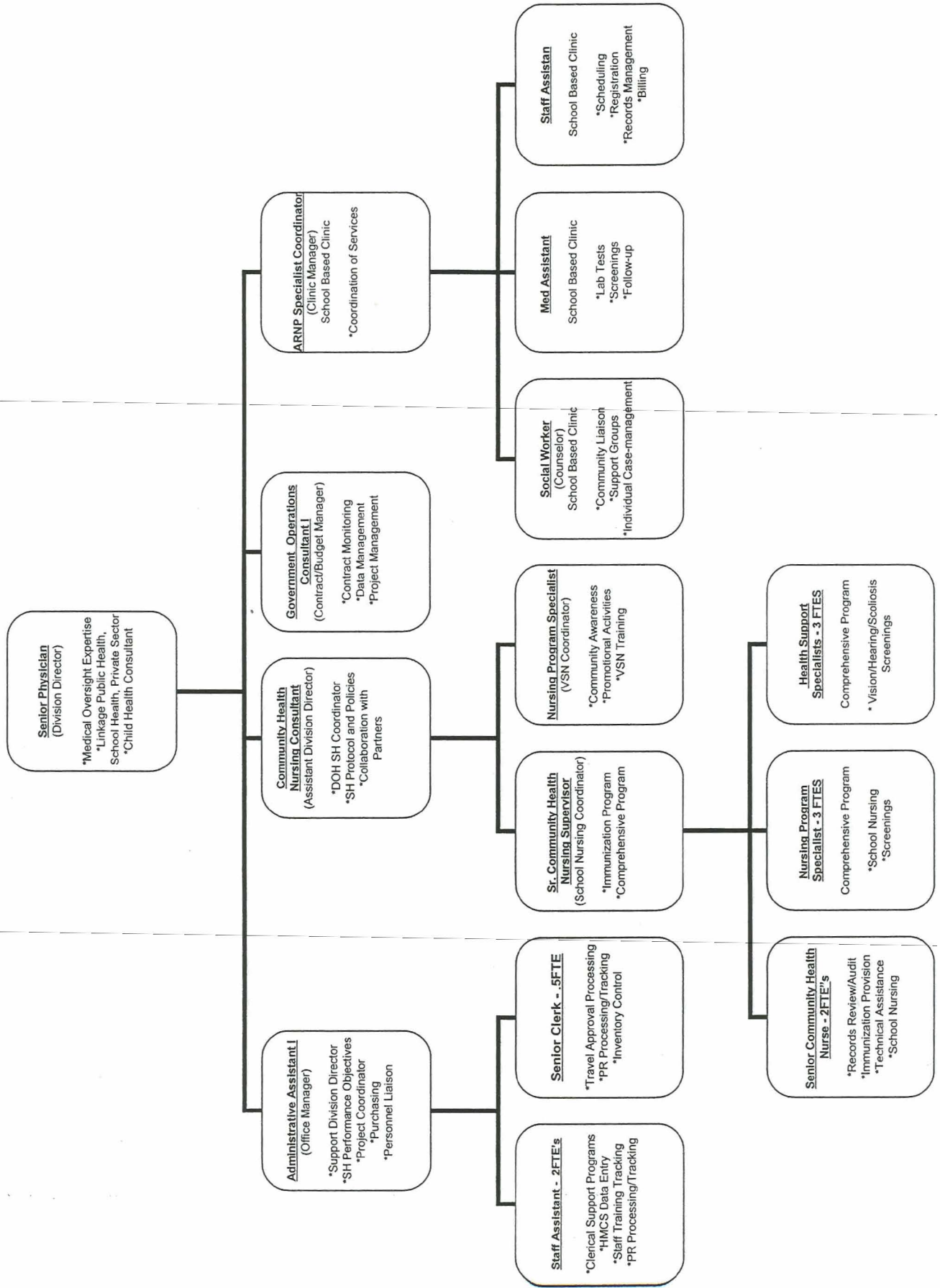
- Nurse practitioners, social workers and FAU staff work in selected areas in collaboration with community partners.
- Provide primary and preventive health care, health education and referrals.

Behavioral Health Initiative

- The goal of the program is early detection of problems and prevention for at-risk students.
- Behavioral health staff in selected elementary schools work with students, parents and school staff.

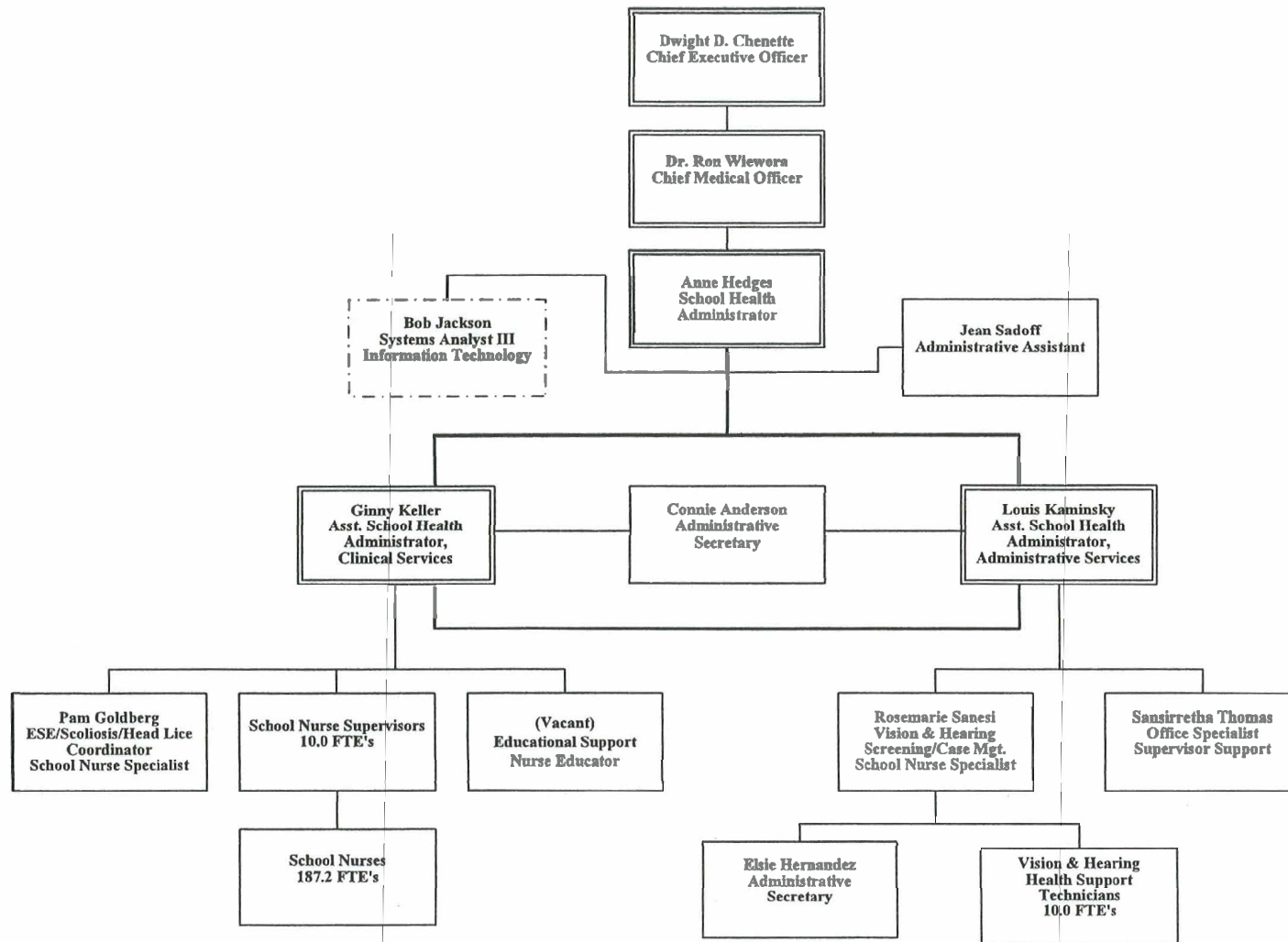


Palm Beach County Health Department School Health Division Organizational Chart - 2006



**Health Care District of Palm Beach County
School Health Program**

Attachment H



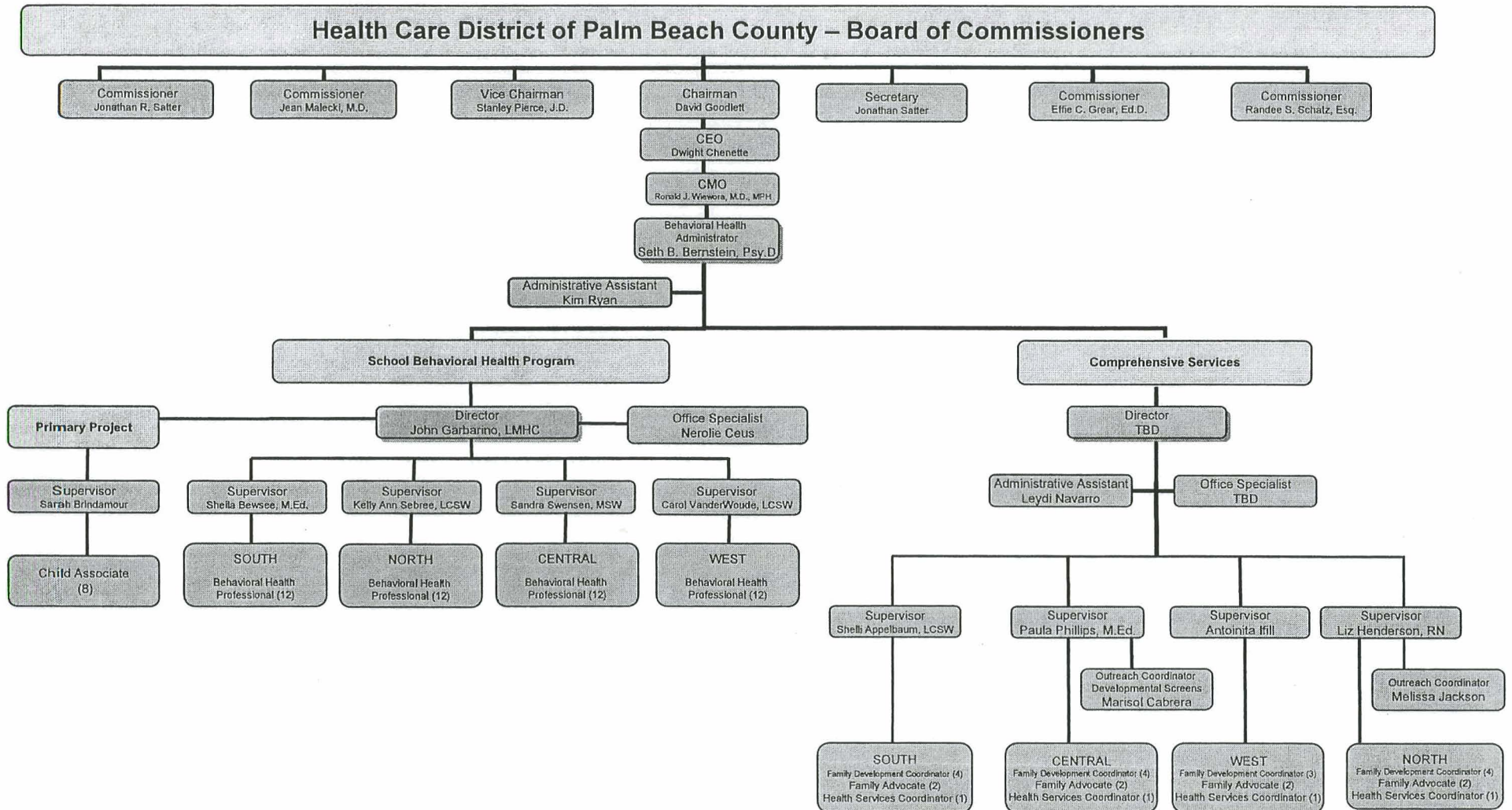
School Nurse Supervisors - Debbie Hebert, Diane Carter, Freda Laurent, Gail Hartshorne, Ginger Ellmyer, Monica Rodgers, Maureen Agnello, Tanya Greer, Renee Parry, Roberta Hammond

Health Support Techs - Chris Jurdak, Felica Wilbon, Janet Mena, Jodie Liebel, Laurenette Everett, Maria Maharajh, Marie-Eleanor Altidor, Maritza Alonso, Sandra Hall

Updated 9-05-06

**Health Care District of Palm Beach County
BEHAVIORAL HEALTH DEPARTMENT
August 2006**

Attachment I



School Year 2005-2006

HOSPITAL PARTNER CONTRIBUTIONS

Boca Raton Community Hospital	\$633,291.00
-------------------------------	--------------

TOTAL	\$633,291.00
-------	--------------

Boca Schools 2006-07

SCHOOL	STUDENT ENROLLMENT
Addison Mizner Elementary	870
Boca Raton Elementary	370
Boca Raton Middle School	1,097
Boca Raton High School	2,231
Calusa Elementary	746
Coral Sunset Elementary	752
Del Prado Elementary	840
Eagles Landing Middle	1,236
Hammock Pointe Elementary	735
JC Mitchell	639
Loggers Run Middle	1,021
Olympic Heights High	1,542
Omni Middle School	1,262
Sandpiper Shores Elementary	719
Spanish River High	2,124
Sunrise Park Elementary	1,051
Verde Elementary	774
Waters Edge Elementary	962
Whispering Pines Elementary	613
	19,584

