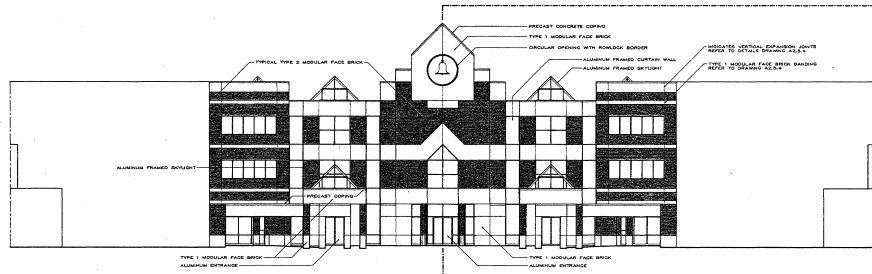
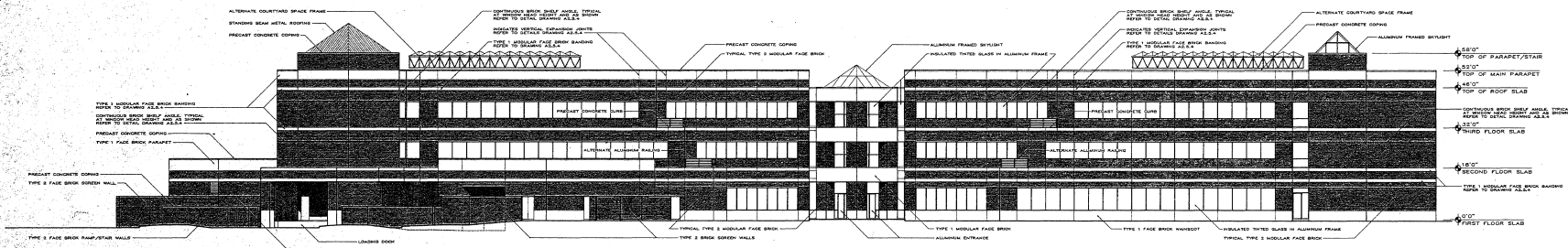


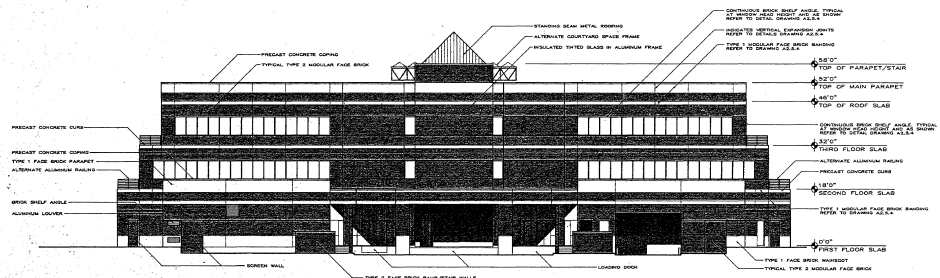
(A) NORTH ELEVATION



(A) ALTERNATE MAIN ENTRANCE/COVERED WALKWAYS

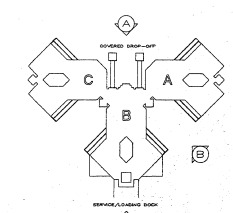


(B) SOUTHEAST ELEVATION



(C) SOUTH ELEVATION

REFER TO ROOF PLAN FOR OVERFLOW SCUPPER LOCATIONS
REFER TO DRAWINGS A6.1, A6.1.2 AND A6.1.3 FOR STOREFRONT ELEVATIONS AND KEYS

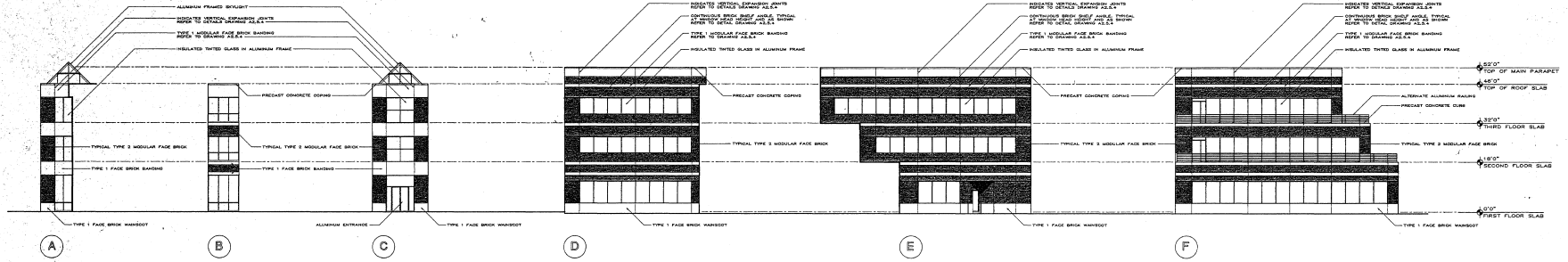


NORTH
KEY PLAN

ELEVATIONS

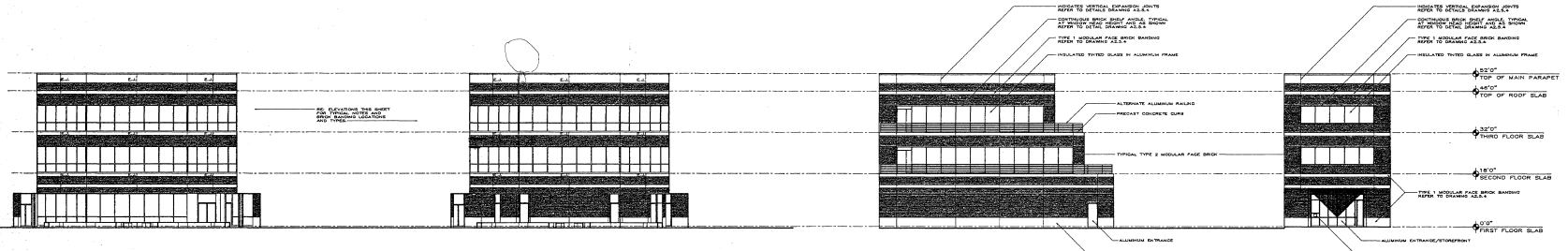
SCALE 1/16" = 10'

SCHWAB, TWITTY & HANSEN ARCHITECTURAL GROUP, INC.
 NORTHBRIDGE CENTRE, SUITE 1400
 WEST PALM BEACH, FLORIDA
 33401-300/552-8589
 PALM BEACH COUNTY SCHOOL BOARD
 ADMINISTRATIVE COMPLEX
 PALM BEACH COUNTY, FLORIDA
 A 251



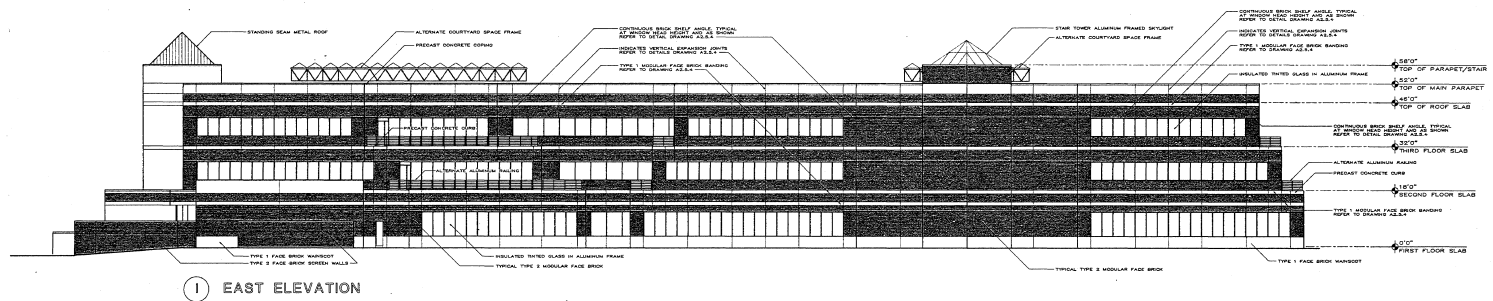
J PARTIAL COURTYARD ELEVATION WING 'A' (SIMILAR FOR WINGS 'B' & 'C')

K PARTIAL COURTYARD ELEVATION WING 'A' (SIMILAR FOR WINGS 'B' & 'C')



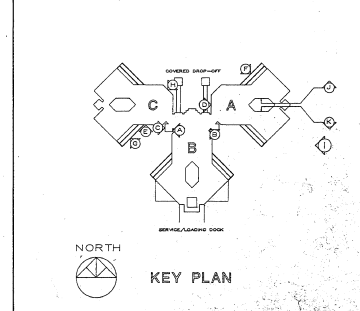
J PARTIAL COURTYARD ELEVATION WING 'A' (SIMILAR FOR WINGS 'B' & 'C')

K PARTIAL COURTYARD ELEVATION WING 'A' (SIMILAR FOR WINGS 'B' & 'C')



I EAST ELEVATION

REFER TO ROOF PLAN FOR OVERFLOW SCUPPER LOCATIONS
REFER TO DRAWINGS AB.1.1, AB.1.2 AND AB.1.3 FOR STOREFRONT ELEVATIONS AND KEYS



ELEVATIONS

SCALE 1/16" = 10'

25.2