

THE SCHOOL DISTRICT OF  
PALM BEACH COUNTY, FLORIDA

3300 FOREST HILL BLVD., B-202  
WEST PALM BEACH, FL 33406-5813  
Ph: 561-434-8850 Fx: 561-434-8903  
[www.palmbeach.k12.fl.us](http://www.palmbeach.k12.fl.us)

**ANN KILLETS**  
CHIEF ACADEMIC OFFICER

**ARTHUR C. JOHNSON, Ph.D.**  
SUPERINTENDENT

**MARC BARON**  
CHIEF OF PERFORMANCE ACCOUNTABILITY

## MEMORANDUM

**TO:** Board Members

**FROM:** Ann Killets   
Chief Academic Officer

**THROUGH:** Arthur C. Johnson, Ph.D.   
Superintendent

**DATE:** April 25, 2007

**SUBJECT:** FY2007 FCAT Writing+ Test Results for All Students Tested

On April 25, 2007, the Florida Department of Education (FDOE) released the results of the FCAT Writing+ Test for all students tested.<sup>1</sup> This test contains both multiple choice and essay sections.<sup>2</sup> Approximately 37,000 SDPBC students took the FCAT Writing+ Test in February 2007 at grades 4, 8, and 10.

A preliminary statistical analysis of the FY2007 results revealed the following:

- The percents of students scoring 3.5 and above increased slightly from FY2006 at grades 4, 8, and 10 for the SDPBC and at grades 4 and 8 for the State.
- The percent of SDPBC students scoring 3.5 and above was discernibly higher than that of the State at grade 4, the same at grade 8, and slightly higher at grade 10.
- The mean points earned by SDPBC students in the four multiple choice reporting categories (Focus, Organization, Support, and Conventions) in grades 4, 8, and 10 were the same for the SDPBC and the State.<sup>3</sup>
- FCAT levels were calculated for the first time in FY2007 for the Writing+ Test. The percent of SDPBC students scoring at Level 3 and above was discernibly higher than that of the State at grade 4, slightly lower at grade 8, and similar to the State at grade 10.
- Other Writing+ scores<sup>4</sup> showed similar patterns to those above, except for scale scores at grade 8, which decreased from FY2006 to FY2007 for both the SDPBC and the State.

Results for the SDPBC, the State of Florida, and District schools are attached. These results will be shared with appropriate staff to provide direction for improvements in curriculum and

<sup>1</sup> The tables and graphs are based on all students tested, and not on the group of students used in the calculation of school grades and AYP. The FDOE has not provided disaggregated data at this time.

<sup>2</sup> The essay section provides a six-point rubric score; the multiple choice section provides category scores; and both sections combined produce an overall scale score and a level score.

<sup>3</sup> The State method of reporting the results of multiple choice categories does not allow comparisons to be made from one year to the next.

<sup>4</sup> Other Writing+ scores are mean rubric score, percent scoring 4.0 and above, and scaled score.

instruction. Also, schools have received their Writing+ scores and will use this information in the school improvement planning process.

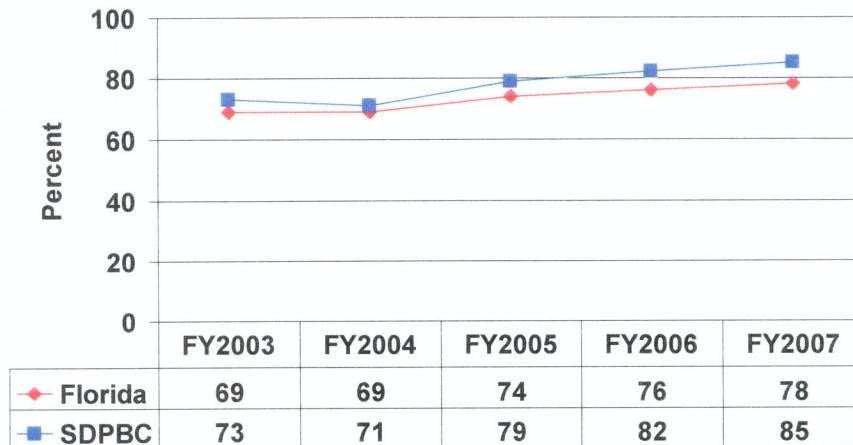
If you have questions about the Writing+ results, please contact Dean Stecker, Director of Research and Evaluation, at 432-6376. If you have questions about instruction and the Writing+ Test, please contact Brenda Magee, Assistant Superintendent, Curriculum and Learning Support, at 963-3899.

ACJ/AK/MB/DS:rj

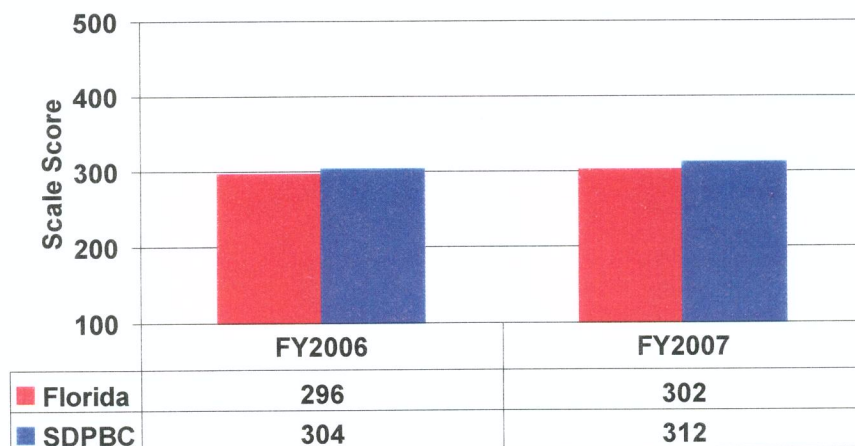
Attachments

c: Academic and Operating Chiefs  
Area/Assistant Superintendents  
Academic Executive Directors/Directors  
Principals

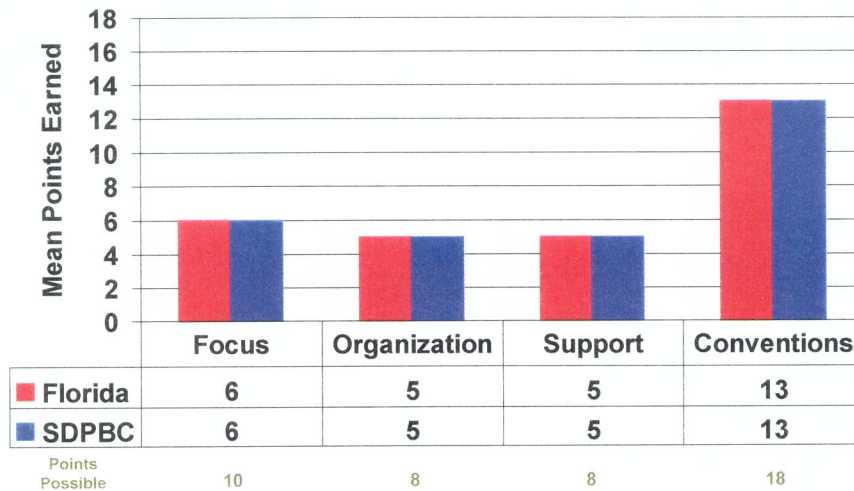
### Grade 4 FCAT Writing Rubric Percent Scoring 3.5 and Above All Students Tested



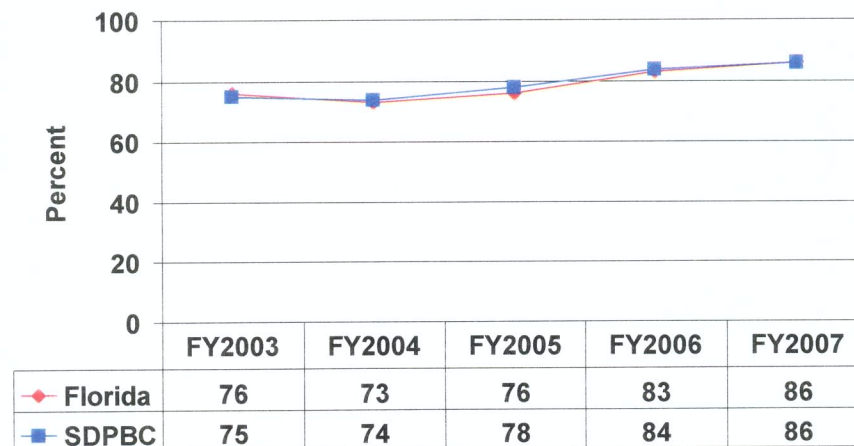
### Grade 4 FCAT Writing+ Mean Scale Score All Students Tested



### Grade 4 FCAT Writing+ FY2007 Mean Multiple Choice Points by Category: All Students Tested

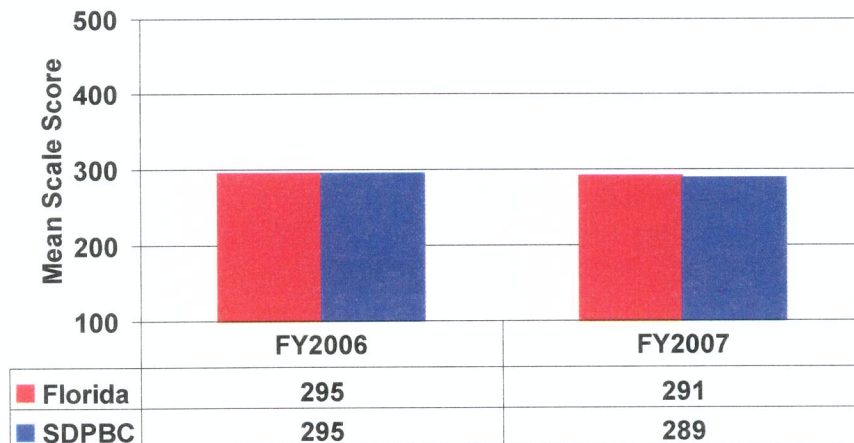


### Grade 8 FCAT Writing Rubric Percent Scoring 3.5 and Above All Students Tested

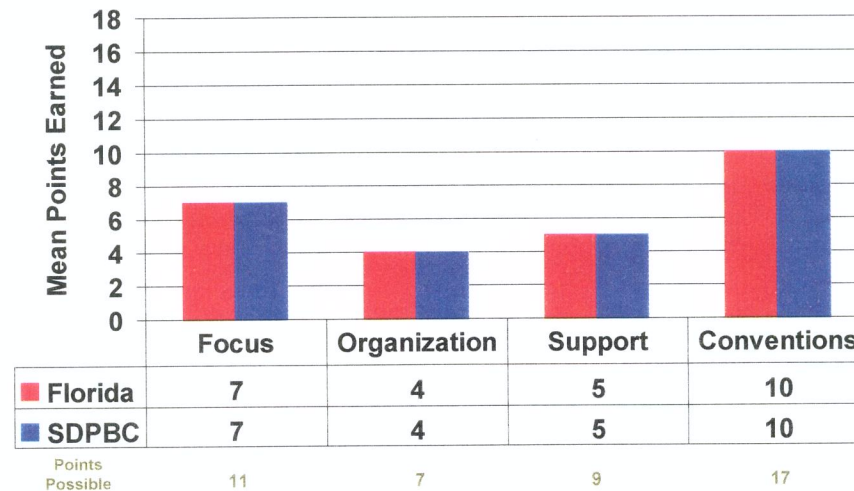




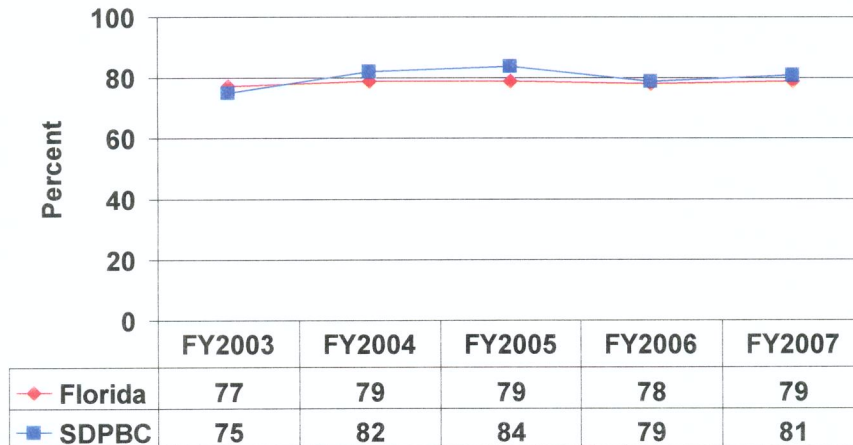
### Grade 8 FCAT Writing+ FY2007 Mean Scale Score All Students Tested



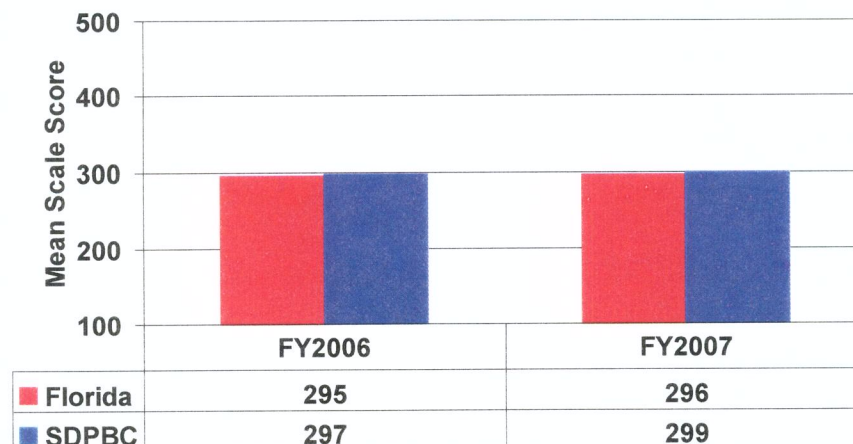
### Grade 8 FCAT Writing+ FY2007 Mean Multiple Choice Points by Category: All Students Tested



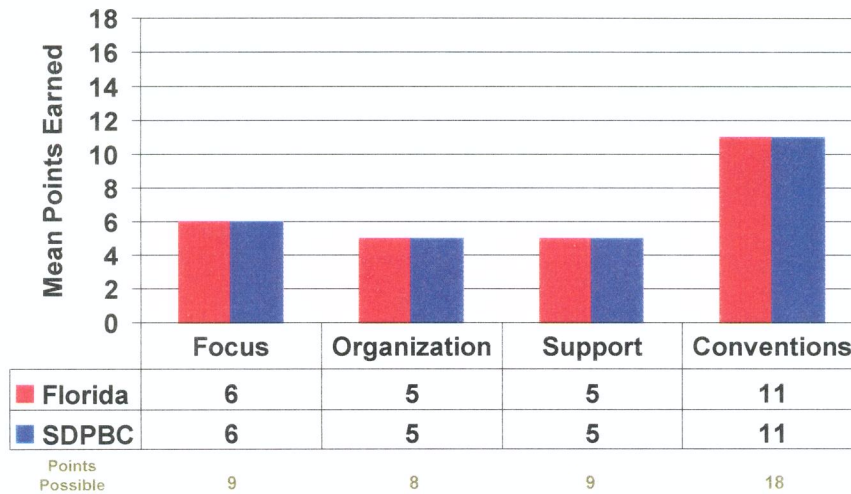
### Grade 10 FCAT Writing Rubric Percent Scoring 3.5 and Above All Students Tested



### Grade 10 FCAT Writing+ FY2007 Mean Scale Score All Students Tested



**Grade 10 FCAT Writing+  
FY2007 Mean Multiple Choice Points by  
Category: All Students Tested**



**FY2007 FCAT Writing+  
Percent Scoring Level 3 and Above  
All Students Tested**

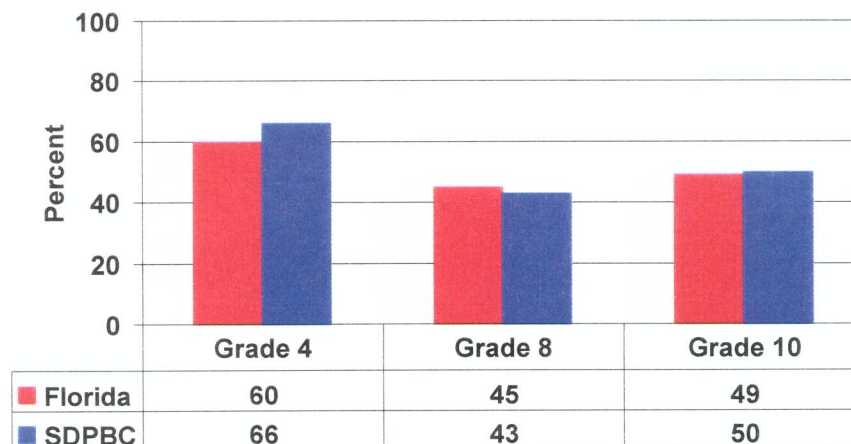


TABLE 1  
SCHOOL DISTRICT OF PALM BEACH COUNTY  
GRADE 4 FCAT WRITING RUBRIC RESULTS FY2007  
Percent Scoring 3.5 And Above - All Students Tested

GRADE 4	Combined	Expository	Narrative
STATE OF FLORIDA	78%	79%	77%
SCHOOL DISTRICT PALM BEACH COUNTY	85%	85%	85%
Acreage Pines	82%	85%	80%
Addison Mizner	84%	80%	87%
Allamanda	84%	82%	85%
Banyan Creek	85%	89%	79%
Barton	93%	86%	91%
Beacon Cove Intermediate	96%	96%	96%
Belle Glade	88%	84%	89%
Belvedere	91%	89%	93%
Benoist Farms	89%	89%	88%
Berkshire	78%	74%	78%
Binks Forest	96%	97%	95%
Boca Raton	84%	76%	93%
C.O. Taylor/Kirklane	77%	72%	80%
Calusa	81%	88%	75%
Cholee Lake	85%	85%	85%
Citrus Cove	92%	94%	90%
Coral Reef	89%	91%	86%
Coral Sunset	82%	88%	75%
Crosspointe	79%	71%	84%
Crystal Lakes	87%	82%	89%
Cypress Trails	92%	93%	91%
D.D. Eisenhower	87%	91%	83%
Del Prado	97%	97%	97%
Diamond View	94%	97%	92%
Discovery Key	75%	76%	75%
Dr Mary McLeod Bethune	85%	89%	81%
Egret Lake	95%	97%	93%
Elbridge Gale	97%	96%	99%
Equestrian Trails	91%	88%	92%
Forest Hill	87%	89%	84%
Forest Park	63%	62%	60%
Freedom Shores	74%	74%	72%
Frontier	93%	93%	93%
Galaxy	73%	59%	79%
Glade View	93%	96%	90%
Golden Grove	88%	89%	87%
Gove	84%	84%	85%
Grassy Waters	86%	81%	88%
Greenacres	54%	59%	47%
Grove Park	75%	73%	78%



TABLE 1  
SCHOOL DISTRICT OF PALM BEACH COUNTY  
GRADE 4 FCAT WRITING RUBRIC RESULTS FY2007  
Percent Scoring 3.5 And Above - All Students Tested

GRADE 4	Combined	Expository	Narrative
H.L. Johnson	90%	90%	90%
Hagen Road	88%	89%	88%
Hammock Pointe	73%	63%	81%
Heritage	91%	90%	91%
Hidden Oaks	89%	87%	89%
Highland	75%	70%	78%
Indian Pines	90%	95%	84%
J.C. Mitchell	88%	83%	89%
Jerry Thomas	92%	92%	93%
Jupiter	89%	88%	89%
Jupiter Farms	91%	97%	86%
K.E.C. Canal Point	94%	96%	92%
Lake Park	84%	77%	83%
Lantana	90%	93%	86%
Liberty Park	85%	86%	83%
Limestone Creek	89%	94%	85%
Lincoln	69%	82%	56%
Loxahatchee Groves	79%	81%	78%
Manatee	86%	87%	84%
Meadow Park	81%	81%	80%
Melaleuca	91%	90%	92%
Morikami Park	93%	97%	90%
New Horizons	83%	79%	84%
North Grade	95%	89%	97%
North Palm Beach	91%	89%	93%
Northboro	90%	90%	89%
Northmore	96%	97%	94%
Orchard View	68%	67%	68%
Pahokee	88%	85%	90%
Palm Beach Gardens	74%	77%	69%
Palm Beach Public	87%	89%	83%
Palm Springs	79%	77%	79%
Palmetto	82%	78%	78%
Panther Run	91%	91%	91%
Pierce Hammock	91%	90%	92%
Pine Grove	92%	95%	84%
Pioneer Park	91%	90%	92%
Pleasant City	75%	70%	80%
Plumosa	66%	63%	68%
Poinciana	79%	81%	77%
Rolling Green	89%	88%	89%
Roosevelt	69%	73%	65%
Rosenwald	75%	84%	66%

TABLE 1  
SCHOOL DISTRICT OF PALM BEACH COUNTY  
GRADE 4 FCAT WRITING RUBRIC RESULTS FY2007  
Percent Scoring 3.5 And Above - All Students Tested

<b>GRADE 4</b>	<b>Combined</b>	<b>Expository</b>	<b>Narrative</b>
Royal Palm Beach	94%	96%	93%
S.D. Spady	90%	92%	89%
Sandpiper Shores	83%	83%	82%
Seminole Trails	76%	78%	74%
South Grade	75%	83%	62%
South Olive	86%	83%	89%
Starlight Cove	81%	81%	79%
Sunrise Park	92%	92%	93%
Timber Trace	86%	85%	87%
U.B. Kinsey Palmview	89%	94%	83%
Verde	91%	92%	90%
Village Academy Ctr	91%	88%	88%
Washington	74%	82%	66%
Waters Edge	96%	94%	99%
Wellington	87%	83%	91%
West Gate	72%	71%	73%
West Riviera	78%	79%	78%
Westward	85%	82%	88%
Whispering Pines	83%	86%	81%
Wynnebrook	89%	90%	88%
<b>ALTERNATIVE SCHOOLS</b>			
North Area Transition Elem	—	—	—
South Area Transition Elem	—	—	—
West Area Transition Elem	—	—	—
<b>ESE CENTERS</b>			
Indian Ridge	—	—	—
<b>CHARTER SCHOOLS</b>			
Academy for Positive Learning	50%	—	—
Boca Raton Charter	71%	—	—
Bright Futures	78%	65%	90%
Chancellor Charter	82%	81%	83%
Charter School of Boynton Bch	58%	—	30%
Daystar Academy of Excellence	50%	—	—
Glades Academy of Agricultural	—	—	—
Good Schools Charter	—	—	—
Guided Path Academy Charter	—	—	—
Hope Learning	—	—	—
JFK Charter	56%	57%	55%
Joseph Littles-Nguzo Saba	73%	—	—
Lakeside Academy	96%	100%	91%
Palm Beach Maritime Academy	79%	71%	88%
The Imagine School	54%	—	—
The Montessori Academy	—	—	—

TABLE 1  
 SCHOOL DISTRICT OF PALM BEACH COUNTY  
 GRADE 4 FCAT WRITING RUBRIC RESULTS FY2007  
 Percent Scoring 3.5 And Above - All Students Tested

GRADE 4	Combined	Expository	Narrative
Western Academy Charter	76%	64%	90%

TABLE 2  
SCHOOL DISTRICT OF PALM BEACH COUNTY  
GRADE 8 FCAT WRITING RUBRIC RESULTS FY2007  
Percent Scoring 3.5 And Above - All Students Tested

<b>GRADE 8</b>	<b>Combined</b>	<b>Expository</b>	<b>Persuasive</b>
<b>STATE OF FLORIDA</b>	86%	84%	87%
<b>SCHOOL DISTRICT PALM BEACH COUNTY</b>	86%	84%	87%
BAK Middle School of the Arts	99%	98%	99%
Bear Lakes	77%	73%	81%
Boca Raton	85%	82%	88%
Carver	82%	78%	84%
Christa McAuliffe	91%	87%	96%
Congress	79%	78%	80%
Conniston	81%	77%	81%
Crestwood	94%	94%	94%
Don Estridge	95%	96%	95%
Eagles Landing	87%	83%	90%
H.L. Watkins	81%	80%	81%
Independence	88%	86%	88%
Jeaga	86%	83%	86%
John F. Kennedy	83%	84%	81%
Jupiter	88%	87%	88%
L C Swain	81%	75%	83%
Lake Shore	75%	70%	75%
Lake Worth	74%	74%	70%
Lantana	89%	88%	90%
Loggers Run	96%	95%	97%
Odyssey	81%	79%	78%
Okeeheelee	82%	78%	84%
Omni	91%	88%	93%
Osceola Creek	91%	91%	90%
Pahokee Middle/Senior	81%	71%	87%
Palm Springs	90%	86%	92%
Polo Park	92%	90%	94%
Roosevelt	84%	87%	81%
Tradewinds	88%	87%	87%
Village Academy Ctr	95%	95%	95%
Watson B. Duncan	88%	86%	90%
Wellington Landings	92%	89%	96%
Western Pines	84%	79%	89%
Woodlands	89%	89%	89%
<b>ALTERNATIVE SCHOOLS</b>			
Alternative Program North	—	—	—
Delray Boynton Academy	50%	56%	47%
Eagle Academy	79%	—	90%
Gold Coast Community	52%	52%	51%
High Ridge	86%	91%	82%



TABLE 2  
SCHOOL DISTRICT OF PALM BEACH COUNTY  
GRADE 8 FCAT WRITING RUBRIC RESULTS FY2007  
Percent Scoring 3.5 And Above - All Students Tested

<b>GRADE 8</b>	<b>Combined</b>	<b>Expository</b>	<b>Persuasive</b>
<b>ALTERNATIVE SCHOOLS (cont.)</b>			
Intensive Transition Central	38%	27%	45%
Intensive Transition North	54%	50%	55%
Intensive Transition South	—	36%	36%
Intensive Transition West	—	—	—
Lake Shore Annex Transition	63%	62%	63%
Oak Grove Academy	—	—	—
<b>ESE CENTERS</b>			
Indian Ridge	—	—	—
<b>CHARTER SCHOOLS</b>			
Academy for Positive Learning	—	—	—
Academy of International Study	73%	—	—
Joseph Littles-Nguzo Saba	—	—	—
Palm Beach Maritime Academy	82%	83%	82%
Western Academy Charter	90%	90%	90%

TABLE 3  
SCHOOL DISTRICT OF PALM BEACH COUNTY  
GRADE 10 FCAT WRITING RUBRIC RESULTS FY2007  
Percent Scoring 3.5 And Above - All Students Tested

<b>GRADE 10</b>	<b>Combined</b>	<b>Expository</b>	<b>Persuasive</b>
<b>STATE OF FLORIDA</b>	79%	76%	81%
<b>SCHOOL DISTRICT PALM BEACH COUNTY</b>	81%	79%	82%
A. W. Dreyfoos School of The Arts	99%	99%	99%
Atlantic	77%	74%	76%
Boca Raton	90%	88%	92%
Boynton Bch Community	64%	61%	61%
Forest Hill	74%	70%	75%
Glades Central	73%	67%	76%
John I. Leonard	77%	76%	75%
Jupiter	88%	86%	90%
Lake Worth	78%	77%	76%
Olympic Heights	83%	82%	79%
Pahokee Middle/Senior	64%	58%	66%
Palm Beach Central	80%	73%	87%
Palm Beach Gardens	84%	81%	85%
Palm Beach Lakes	71%	70%	70%
Park Vista Community	91%	90%	91%
Royal Palm Beach	79%	78%	79%
Santaluces	75%	71%	76%
Seminole Ridge Comm.	80%	79%	81%
Spanish River	92%	92%	93%
Suncoast	96%	96%	96%
W.T. Dwyer	82%	80%	84%
Wellington	88%	86%	90%
West Boca Raton Comm	91%	89%	93%
<b>ALTERNATIVE SCHOOLS</b>			
Alternative Program Central	—	—	—
Alternative Program North	—	—	—
Eagle Academy	—	—	—
High Ridge	—	—	—
Intensive Transition Central	27%	—	—
Intensive Transition North	40%	—	—
Intensive Transition South	20%	—	—
Intensive Transition West	—	—	—
Life Skills North	32%	26%	35%
Life Skills South	26%	36%	20%
Life Skills West	17%	14%	18%
Palm Beach Mall Academy	—	—	—
<b>ESE CENTERS</b>			
Indian Ridge	—	—	—

TABLE 3  
SCHOOL DISTRICT OF PALM BEACH COUNTY  
GRADE 10 FCAT WRITING RUBRIC RESULTS FY2007  
Percent Scoring 3.5 And Above - All Students Tested

<b>CHARTER SCHOOLS</b>			
Delray Youth Vocational Charter	47%	42%	52%
Everglades Preparatory Academy	43%	38%	47%
G-Star	90%	89%	91%
Gulf Stream Goodwill Career	50%	—	—
Inlet Grove	72%	73%	71%
Leadership Academy West	53%	61%	44%
Life Skills Center PBC	29%	42%	19%
Riviera Beach Maritime Academy	—	—	—
South Tech Charter High	82%	78%	86%
Toussaint L'Ouverture	36%	—	—